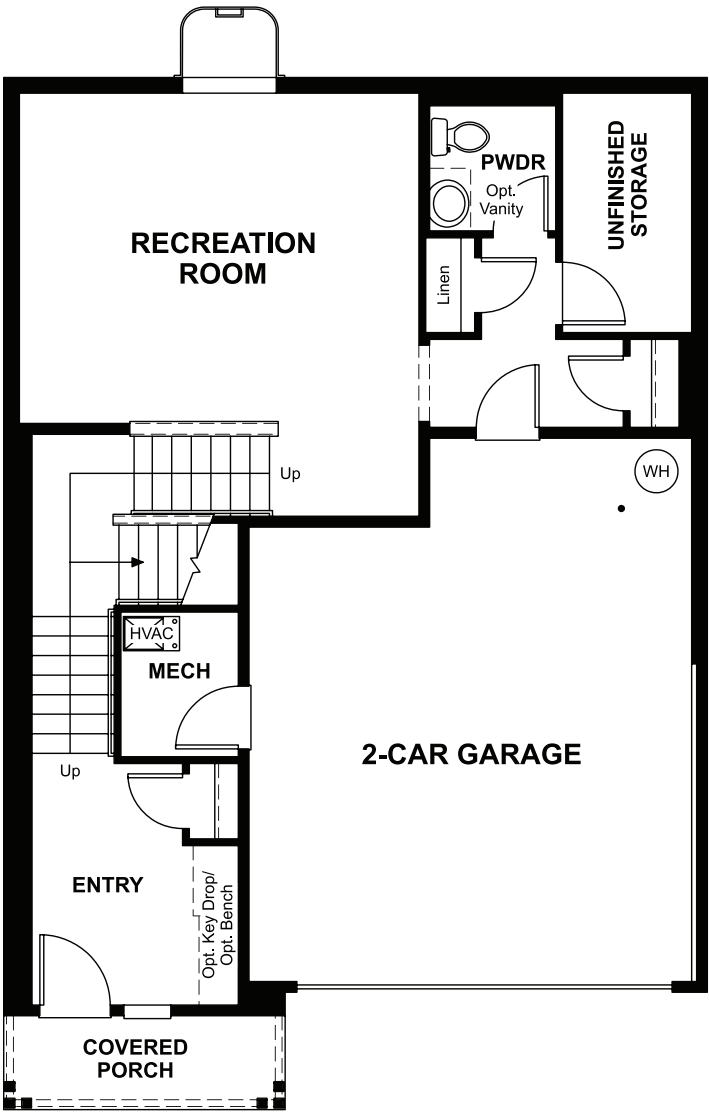


BASEMENT



ELEVATION F

ABOUT THE LARISSA

The lower floor of the Larissa plan features a spacious rec room, a powder room and a convenient 2-car garage. On the main floor, you'll find a lavish owner's suite with a private bath, an inviting great room with a cozy fireplace and a gourmet kitchen with a walk-in pantry and breakfast bar overlooking a generous dining room. The upper level boasts a laundry, a versatile loft and three additional bedrooms.

COMMUNITY LOCATION:

Valley View | 91<sup>st</sup> Avenue South and S. 204<sup>th</sup> Place | Kent, WA 98031 | 253.235.4570

DESIGN CENTER LOCATION:

Washington Home Gallery™ | 20829 72<sup>nd</sup> Avenue South, Suite 115 | Kent, WA 98032 | 253.446.7277

\*This information is presented for educational purposes only. The HERS® index for a confirmed rating will be determined by a third-party HERS rater based on data gathered from on-site observations and, if required, testing of rated features for a home as featured, optioned, located, oriented and/or built.

\*\*Standard new home is based on the RESNET® Reference Home definition with a HERS index of 100 (based on the 2006 International Energy Conservation Code).

\*\*\*Typical resale home is based on the U.S. Department of Energy definition with a HERS index of 130.

^RESNET has developed the HERS index to indicate the comparative efficiencies of homes. It is no guarantee that energy efficiencies will be achieved.

Floor plans and renderings are conceptual drawings and may vary from actual plans and homes as built. Options and features may not be available on all homes and are subject to change without notice. Actual homes may vary from photos and/or drawings which show upgraded landscaping and may not represent the lowest-priced homes in the community. Features may include optional upgrades and may not be available on all homes. Prices, specifications and availability are subject to change without notice. Square footage is approximate and subject to change without notice. ©2022 Richmond American Homes, Richmond American Homes of Washington, Inc. 9/26/2022



ELEVATION D



ELEVATION E



