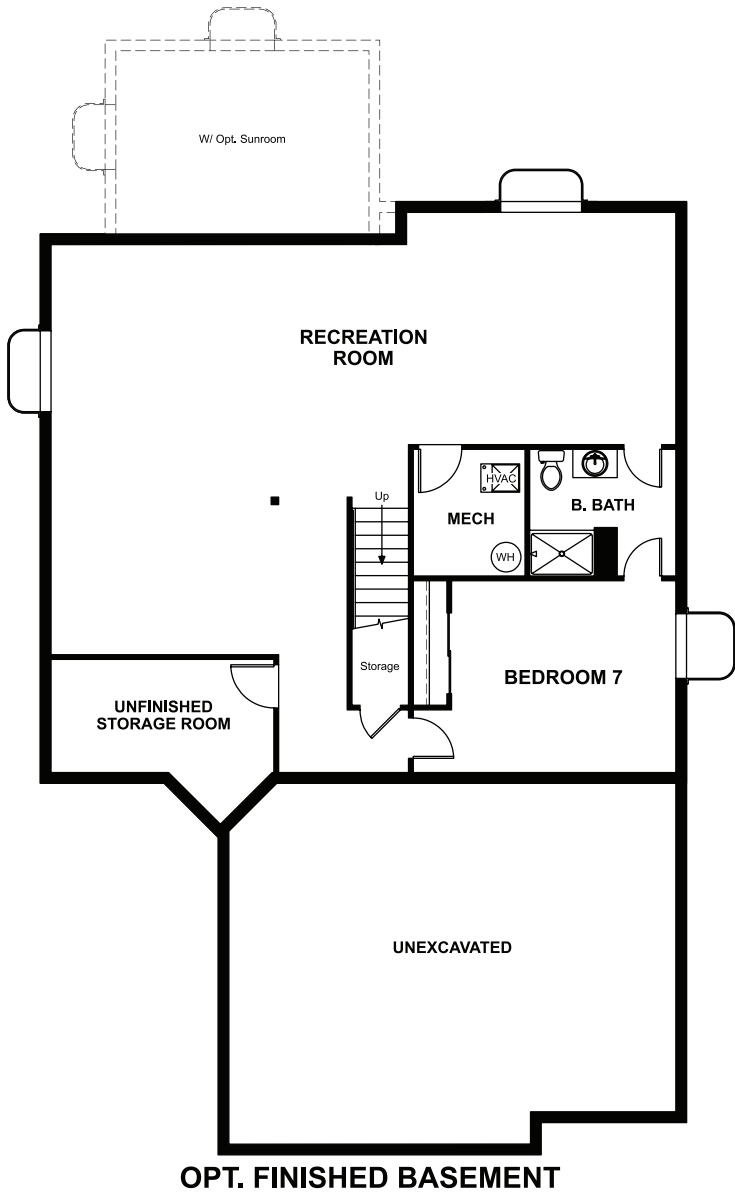


BASEMENT




COMMUNITY LOCATION:

Colliers Hill | 1292 Summit Rise Drive | Erie, CO 80516 | 303.828.0363

DESIGN CENTER LOCATION:

Denver Metro Home Gallery™ | 8000 E. Belview Avenue, Suite C-12 | Greenwood Village, CO 80111 | 888.402.4663

 Floor plans and renderings are conceptual drawings and may vary from actual plans and homes as built. Options and features may not be available on all homes and are subject to change without notice. Actual homes may vary from photos and/or drawings which show upgraded landscaping and may not represent the lowest-priced homes in the community. Features may include optional upgrades and may not be available on all homes. Prices, specifications and availability are subject to change without notice. Square footage is approximate and subject to change without notice. ©2022 Richmond American Homes, Richmond American Homes of Colorado, Inc. 10/03/2022



ELEVATION C

ABOUT THE SETH

The open Seth plan greets visitors with a covered front porch and continues to impress with formal living and dining rooms, a family room with optional fireplace and a large kitchen with center island, optional granite countertops and breakfast nook. Upstairs, you'll find a convenient laundry, a versatile loft and a relaxing owner's suite. A finished basement is also available.



ELEVATION A



ELEVATION B



MAIN FLOOR

SECOND FLOOR

