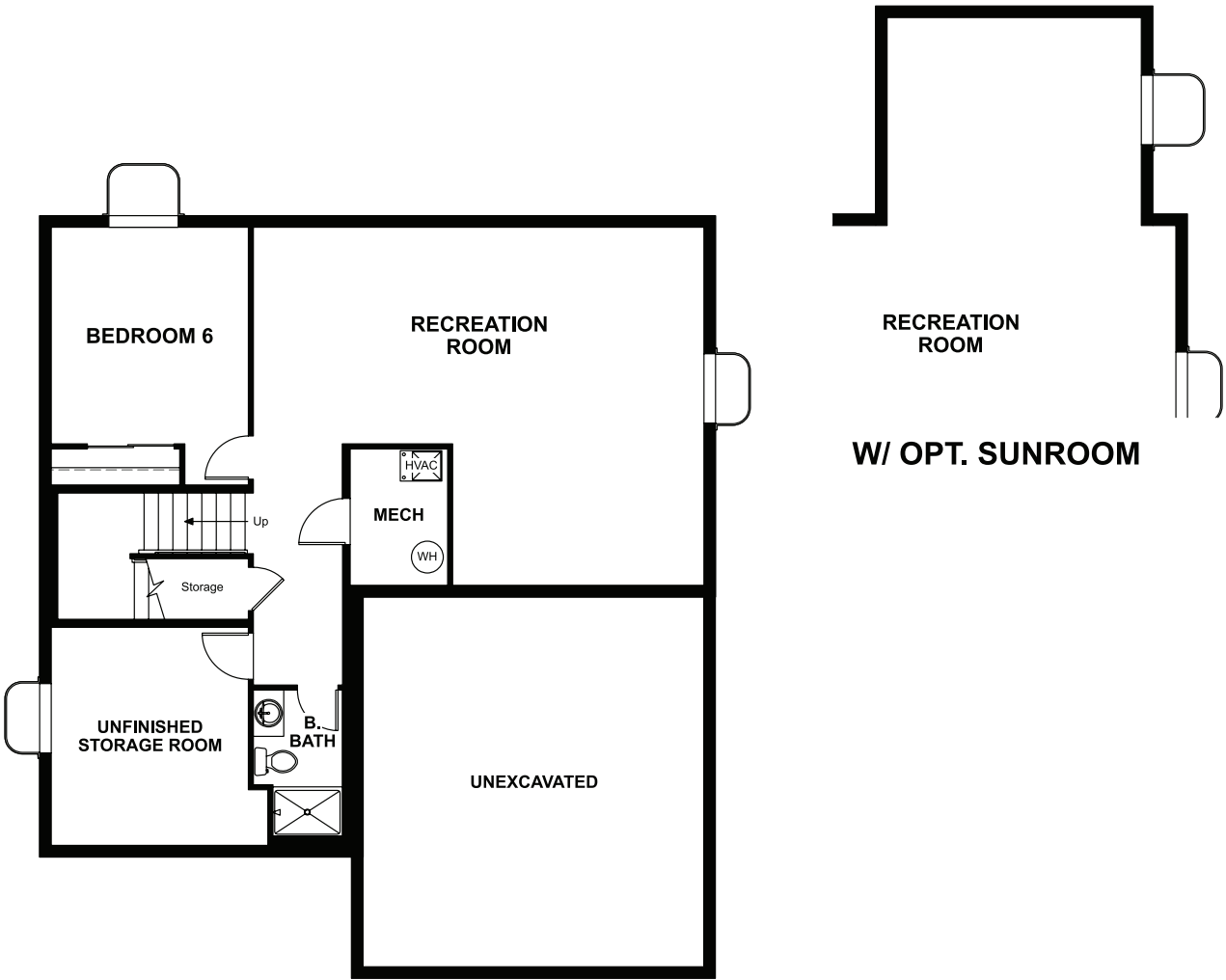


BASEMENT



OPT. FINISHED BASEMENT



ELEVATION D

ABOUT THE HEMINGWAY

The main floor of this beautiful home features a versatile flex room, a great room with optional fireplace, a large kitchen with a central island and an optional covered patio. Upstairs, you'll find a convenient laundry room, a spacious loft and a lavish owner's suite with a private bath and a roomy walk-in closet.

COMMUNITY LOCATION:

Colliers Hill | 1292 Summit Rise Drive | Erie, CO 80516 | 303.828.0363

DESIGN CENTER LOCATION:

Denver Metro Home Gallery™ | 8000 E. Belview Avenue, Suite C-12 | Greenwood Village, CO 80111 | 888.402.4663



Floor plans and renderings are conceptual drawings and may vary from actual plans and homes as built. Options and features may not be available on all homes and are subject to change without notice. Actual homes may vary from photos and/or drawings which show upgraded landscaping and may not represent the lowest-priced homes in the community. Features may include optional upgrades and may not be available on all homes. Prices, specifications and availability are subject to change without notice. Square footage is approximate and subject to change without notice. ©2022 Richmond American Homes, Richmond American Homes of Colorado, Inc. 10/03/2022



ELEVATION A

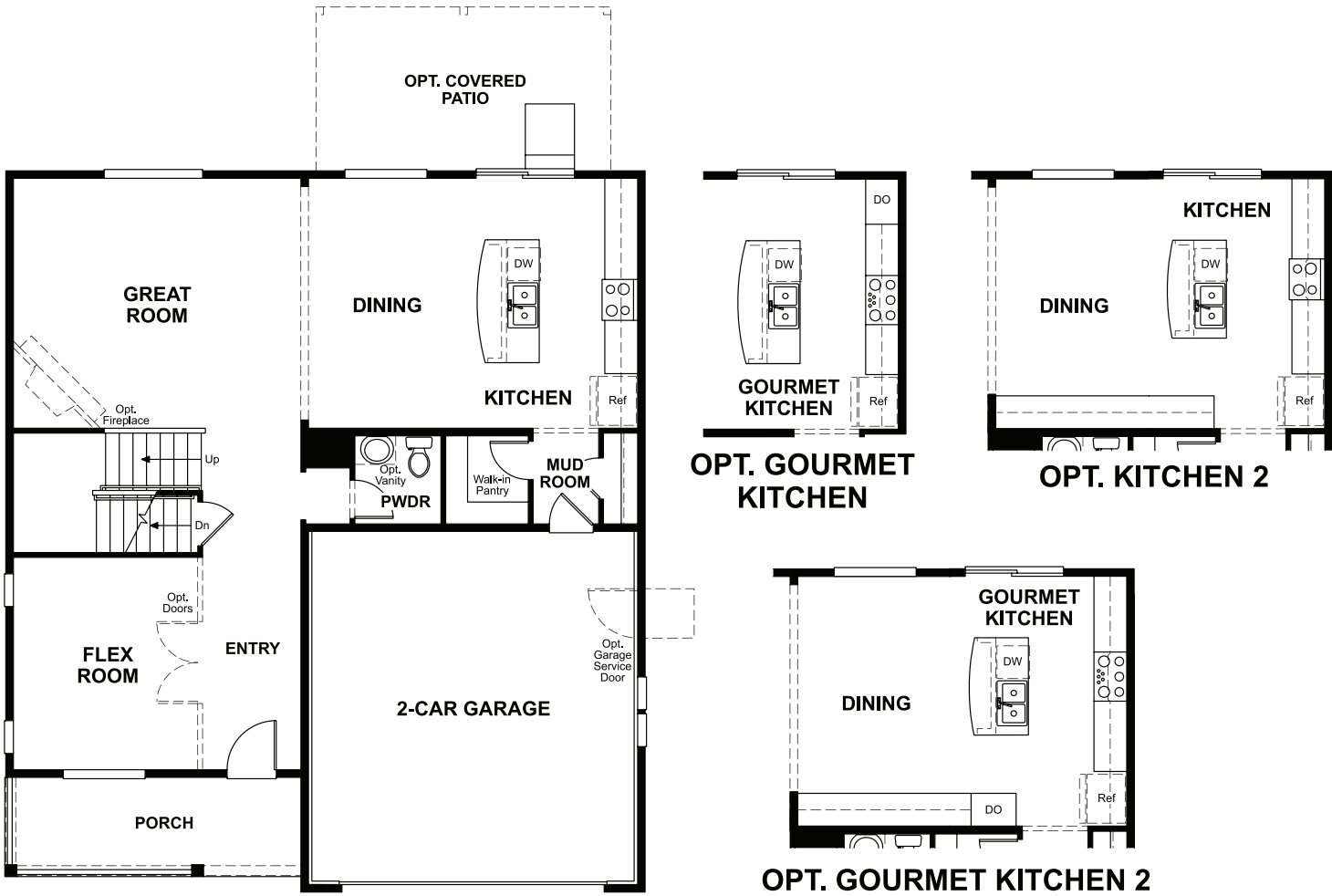
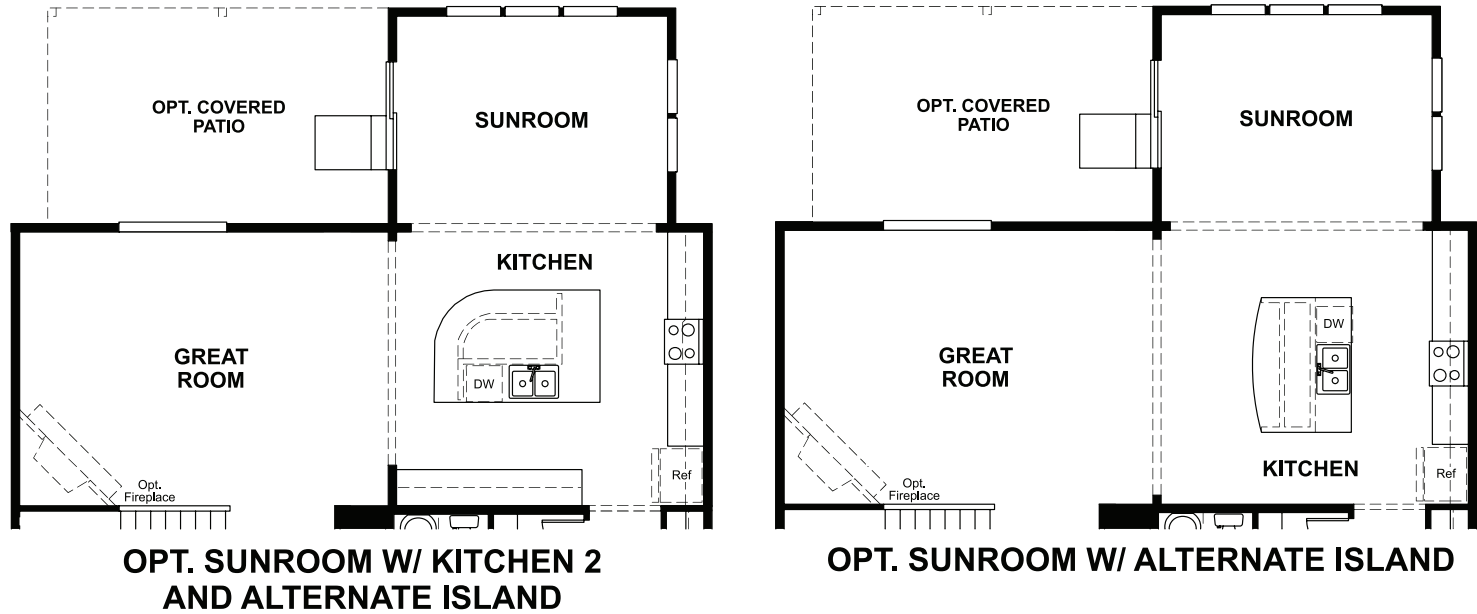


ELEVATION B



ELEVATION C

MAIN FLOOR



SECOND FLOOR

