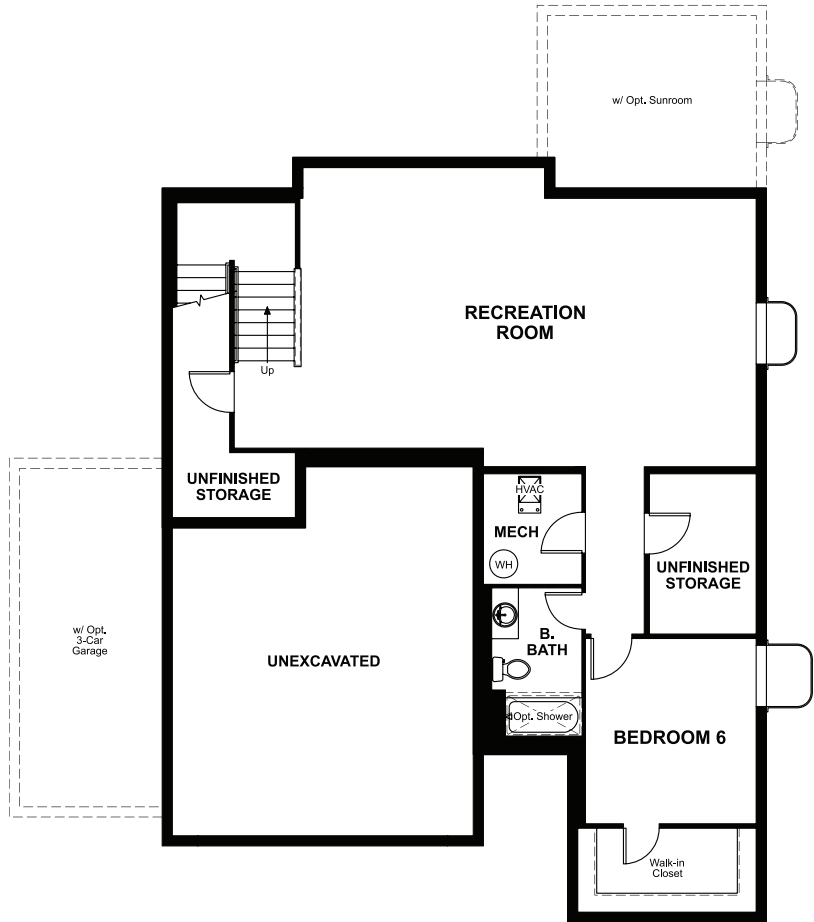


BASEMENT



OPT. FINISHED BASEMENT



ELEVATION E

ABOUT THE HOPEWELL

Love to entertain? The Hopewell's wide open great room and dining area are ideal for gathering with friends and family. The adjacent kitchen allows you to interact with guests without interrupting meal prep. Opt for a sunroom or covered patio for even more space to mingle. Upstairs, enjoy a loft, two guest rooms and a large owner's bedroom with a private bath and immense walk-in closet. Personalize with a finished basement, bonus bedrooms, a deluxe owner's bath and more.

COMMUNITY LOCATION:

Colliers Hill | 1292 Summit Rise Drive | Erie, CO 80516 | 303.828.0363

DESIGN CENTER LOCATION:

Denver Metro Home Gallery™ | 8000 E. Belview Avenue, Suite C-12 | Greenwood Village, CO 80111 | 888.402.4663



Floor plans and renderings are conceptual drawings and may vary from actual plans and homes as built. Options and features may not be available on all homes and are subject to change without notice. Actual homes may vary from photos and/or drawings which show upgraded landscaping and may not represent the lowest-priced homes in the community. Features may include optional upgrades and may not be available on all homes. Prices, specifications and availability are subject to change without notice. Square footage is approximate and subject to change without notice. ©2022 Richmond American Homes, Richmond American Homes of Colorado, Inc. 08/18/2022



ELEVATION B



ELEVATION C



ELEVATION D

MAIN FLOOR

SECOND FLOOR

