

# THE AGATE

Approx. 2,080 sq. ft. | 3 to 4 bed | 2 to 3 bath | 2- to 3-car garage | Plan #B922



ELEVATION D

## ABOUT THE AGATE

The thoughtfully designed Agate plan offers an open layout with a well-appointed kitchen—featuring a center island and pantry—overlooking a spacious great room and dining area with patio access. A secluded owner’s suite boasts an expansive walk-in closet and a private bath with optional double sinks. You’ll also appreciate a versatile flex room and two additional bedrooms. Personalize this exceptional ranch plan with an alternate kitchen layout, a bedroom in lieu of the flex room, and a covered patio!



ELEVATION A



ELEVATION B

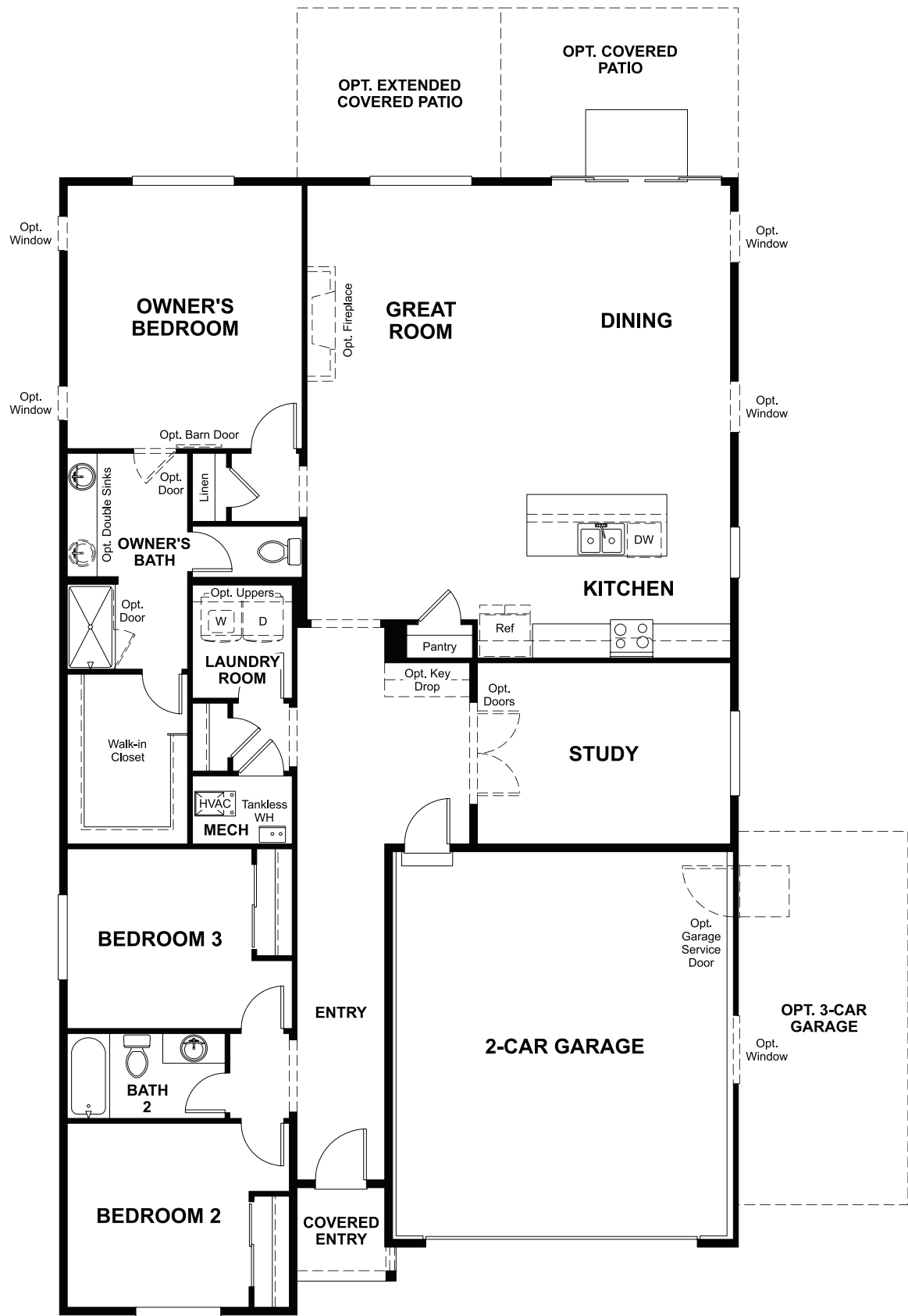


ELEVATION C



Floor plans and renderings are conceptual drawings and may vary from actual plans and homes as built. Options and features may not be available on all homes and are subject to change without notice. Actual homes may vary from photos and/or drawings which show upgraded landscaping and may not represent the lowest-priced homes in the community. Features may include optional upgrades and may not be available on all homes. Prices, specifications and availability are subject to change without notice. Square footage is approximate and subject to change without notice. ©2022 Richmond American Homes, Richmond American Homes of Idaho, Inc., #RCE-57923. 11/29/22

MAIN FLOOR



MAIN-FLOOR OPTIONS

