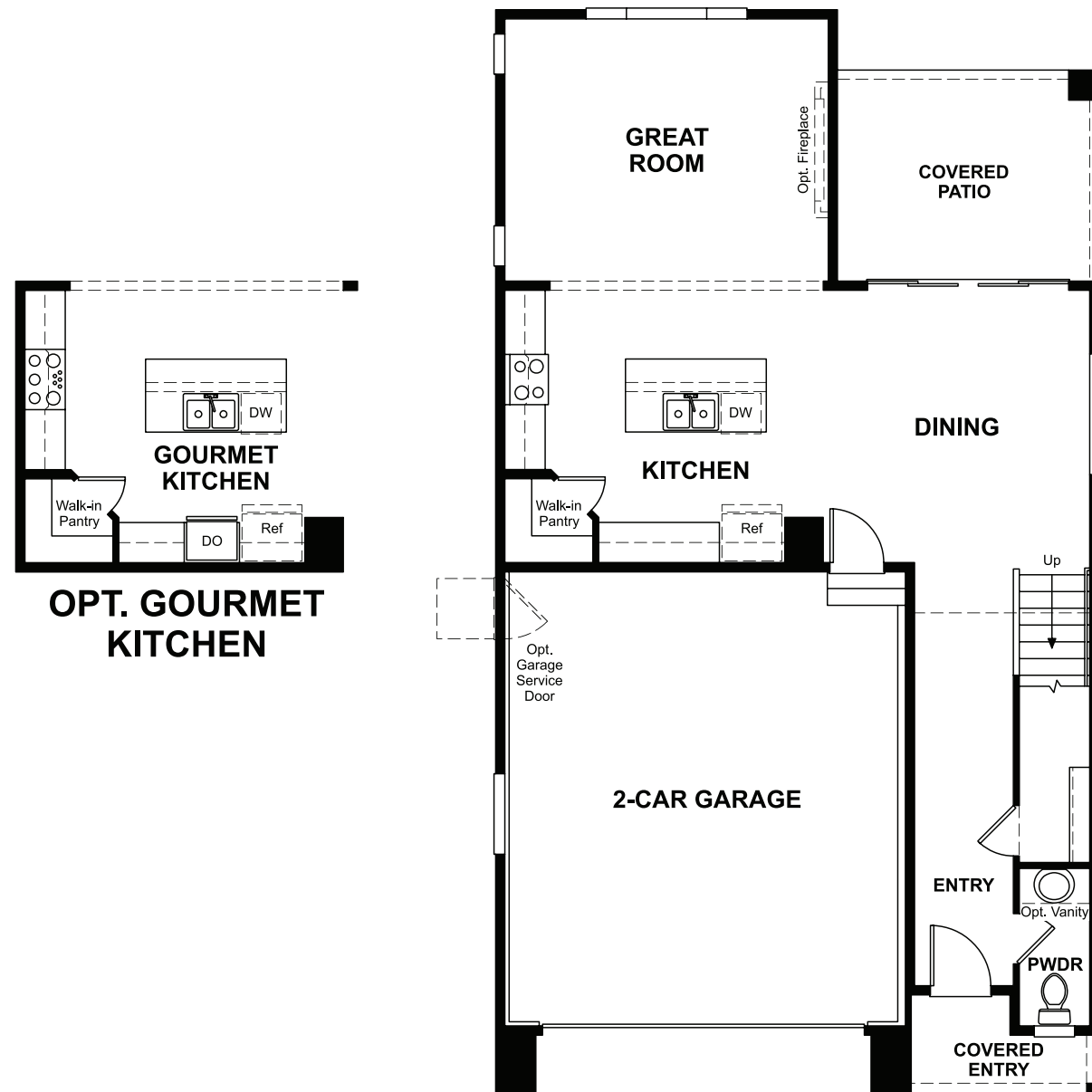


LOWER FLOOR



ELEVATION C

ABOUT THE JULIEN

The Julien plan makes a great first impression with its welcoming covered entry. The lower floor boasts a convenient powder room, a generous great room, an elegant kitchen featuring a center island and a walk-in pantry, and a dining nook with center-meet doors leading onto a serene covered patio. On the main floor, you'll appreciate a large loft, a central laundry, two secondary bedrooms with a shared bath, and a relaxing owner's suite with a private bath and an oversized walk-in closet. Completing the home are an upstairs bonus room and a spacious covered terrace. Personalize this plan with a gourmet kitchen, a deluxe owner's bath, an additional bedroom in lieu of the loft, and a rear covered terrace off the bonus room.



ELEVATION A



ELEVATION B

COMMUNITY LOCATION:

Sierra at Ascent Village | 8072 Yampa River Avenue | Littleton, CO 80125 | 303.850.5750

DESIGN CENTER LOCATION:

Denver Metro Home Gallery™ | 8000 E. Belleview Avenue, Suite C-12 | Greenwood Village, CO 80111 | 888.402.4663



Floor plans and renderings are conceptual drawings and may vary from actual plans and homes as built. Options and features may not be available on all homes and are subject to change without notice. Actual homes may vary from photos and/or drawings which show upgraded landscaping and may not represent the lowest-priced homes in the community. Features may include optional upgrades and may not be available on all homes. Prices, specifications and availability are subject to change without notice. Square footage is approximate and subject to change without notice. ©2022 Richmond American Homes, Richmond American Homes of Colorado, Inc. 11/8/2022

MAIN FLOOR

UPPER FLOOR

