



ELEVATION C

ABOUT THE SETH

The Seth greets visitors with a charming front porch and continues to impress with a private study and a formal dining room. An open layout showcases a great room with an optional fireplace, a dining nook and a large kitchen with an island and walk-in pantry. Upstairs, you'll find a loft, three bedrooms and a lavish owner's suite with two walk-in closets and an attached bath. Personalize this home with deluxe or gourmet kitchen features, a covered patio, a sunroom off of the kitchen, and an exercise room in place of the second upstairs bedroom. The study and the loft may be optioned as additional bedrooms.

COMMUNITY LOCATION:

Laguna Ranch | 10119 Ashlar Drive | Elk Grove, CA 95757 | 916.581.7004

DESIGN CENTER LOCATION:


Northern California Home Gallery™ | One Harbor Center, Suite 150 | Suisun City, CA 94585 | 707.416.2800

\*This information is presented for educational purposes only. The HERS® index for a confirmed rating will be determined by a third-party HERS rater based on data gathered from on-site observations and, if required, testing of rated features for a home as featured, optioned, located, oriented and/or built.

\*\*Standard new home is based on the RESNET® Reference Home definition with a HERS index of 100 (based on the 2006 International Energy Conservation Code).

\*\*\*Typical resale home is based on the U.S. Department of Energy definition with a HERS index of 130.

^RESNET has developed the HERS index to indicate the comparative efficiencies of homes. It is no guarantee that energy efficiencies will be achieved.



Floor plans and renderings are conceptual drawings and may vary from actual plans and homes as built. Options and features may not be available on all homes and are subject to change without notice. Actual homes may vary from photos and/or drawings which show upgraded landscaping and may not represent the lowest-priced homes in the community. Features may include optional upgrades and may not be available on all homes. Prices, specifications and availability are subject to change without notice. Square footage is approximate and subject to change without notice. ©2023 Richmond American Homes, Richmond American Homes of Maryland, Inc., California Department of Real Estate – Real Estate Broker, Corporation License Number 01842595. 6/22/2023



ELEVATION A

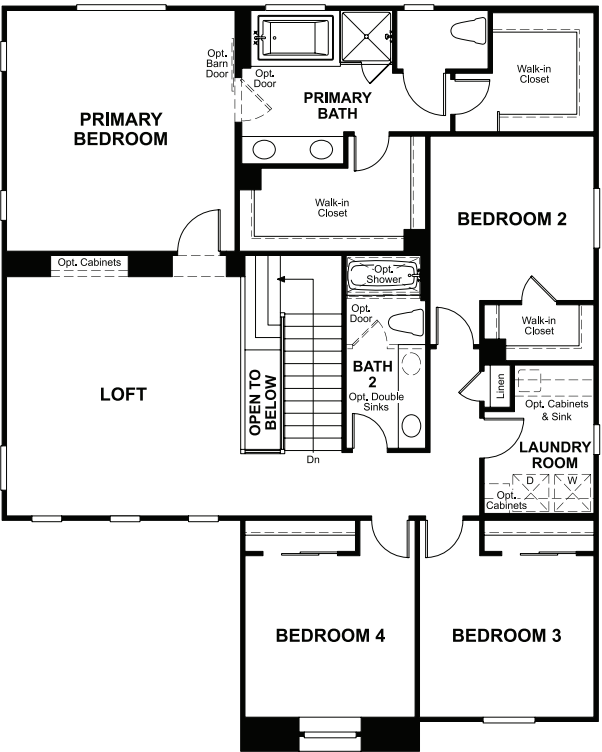
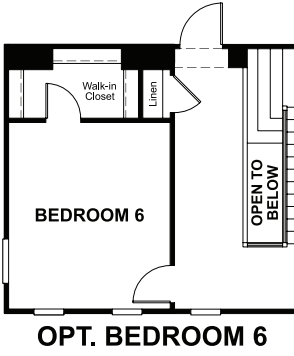
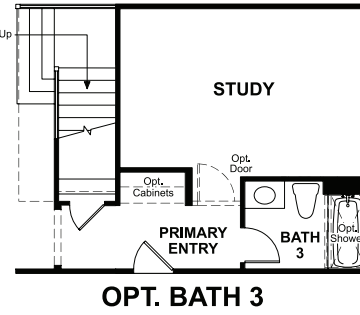
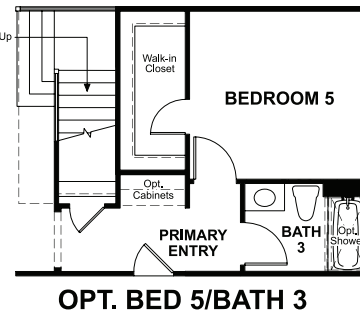
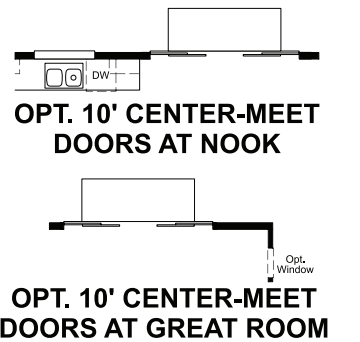
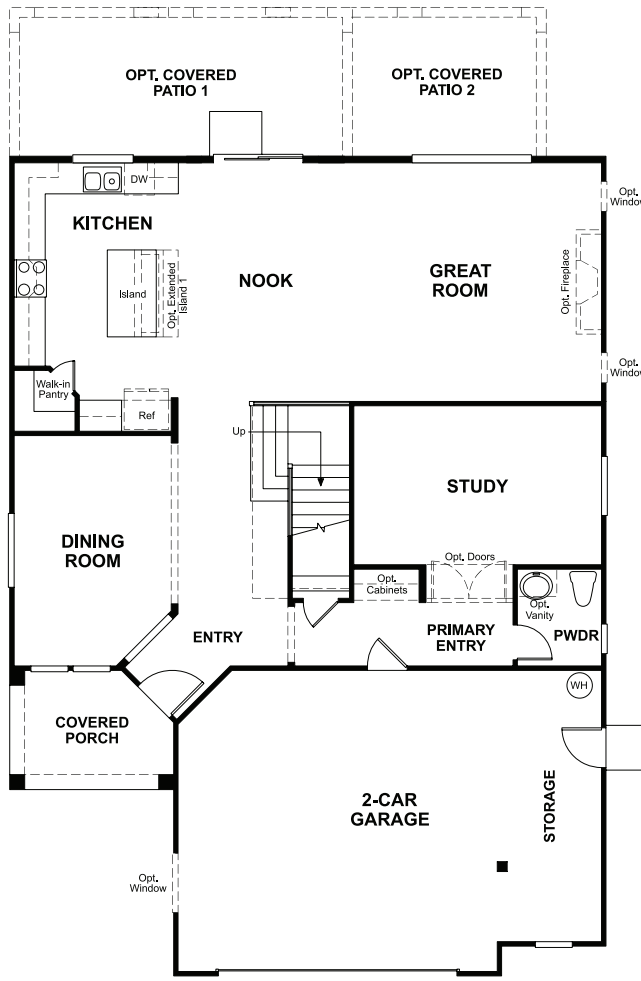
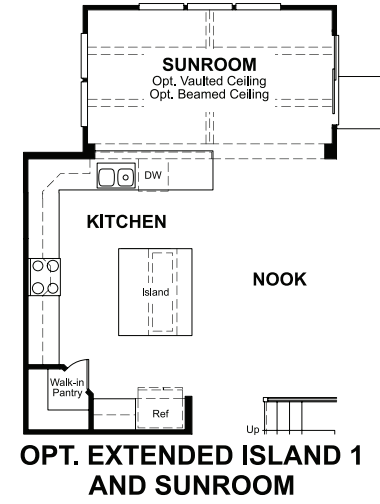
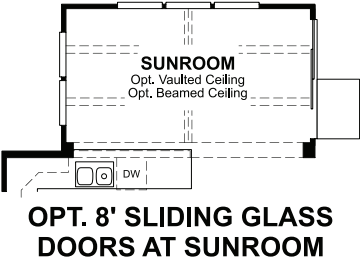
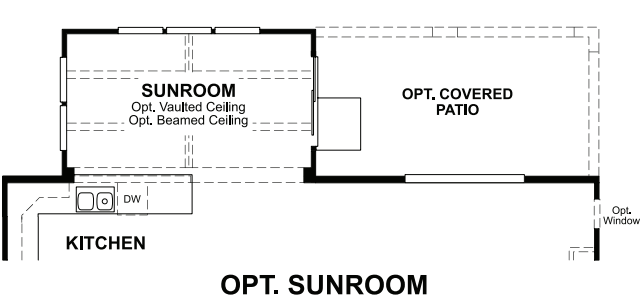
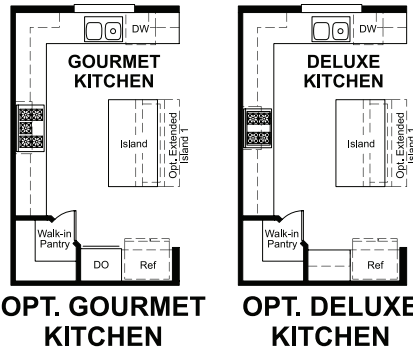


ELEVATION B



MAIN FLOOR

SECOND FLOOR



THIS PLAN'S PROJECTED  
**HERS® INDEX = 31** \*

Projected rating based on plans – field confirmation required

**How does this floor plan rate?**

Take a look: **100** = standard new home™ **130** = typical resale home™

The lower the number, the better! Refer to the RESNET® HERS index brochure or go to **RESNET.us** and **HERSindex.com**

**What's a HERS® index?** HERS stands for Home Energy Rating System, a system created by RESNET® to measure home energy efficiency.^

A projected HERS index or rating is a computer simulation performed prior to construction by a third-party HERS rater using RESNET-accredited rating software, rated feature and specification data derived from home plans, features and specifications, and other data selected or assumed by the rater. The projected HERS index is approximate and is subject to change without notice. Actual results will vary.