

Skyline Ridge
BETHANY



Elevation A

Approx. square feet: 2,950

Stories: 2

Bedrooms: 4 - 6

Garage: 2-car

Plan Number: L29B

The Bethany plan welcomes guests with an elegant covered porch. A formal dining room, spacious great room, nook and open kitchen provide space for entertaining. Upstairs features a loft area and three inviting bedrooms, including the master suite with spacious walk-in closet. Options include a study and covered patio.

Available elevations:



Elevation A



Elevation B



Elevation C

COMMUNITY LOCATION

Grand Canyon Drive and Ford Avenue
Las Vegas, NV 89178
702-638-4440

HOME GALLERY

7770 South Dean Martin Drive, Suite 308
Las Vegas, NV 89139
702-617-8400



COMMUNITY LOCATION

Grand Canyon Drive and Ford Avenue
Las Vegas, NV 89178
702-638-4440

HOME GALLERY

7770 South Dean Martin Drive, Suite 308
Las Vegas, NV 89139
702-617-8400

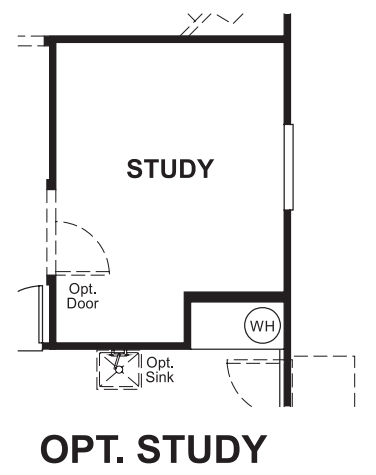
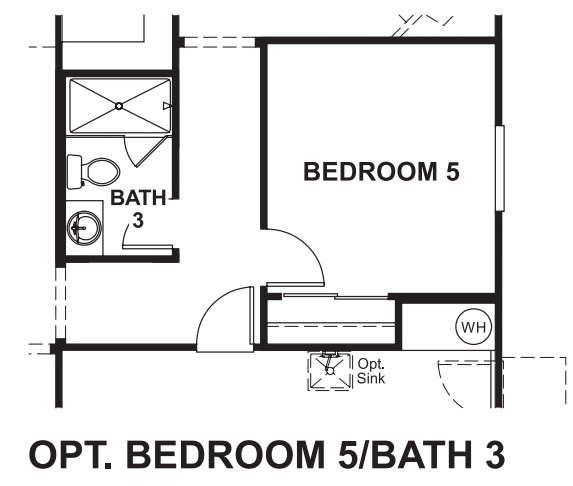
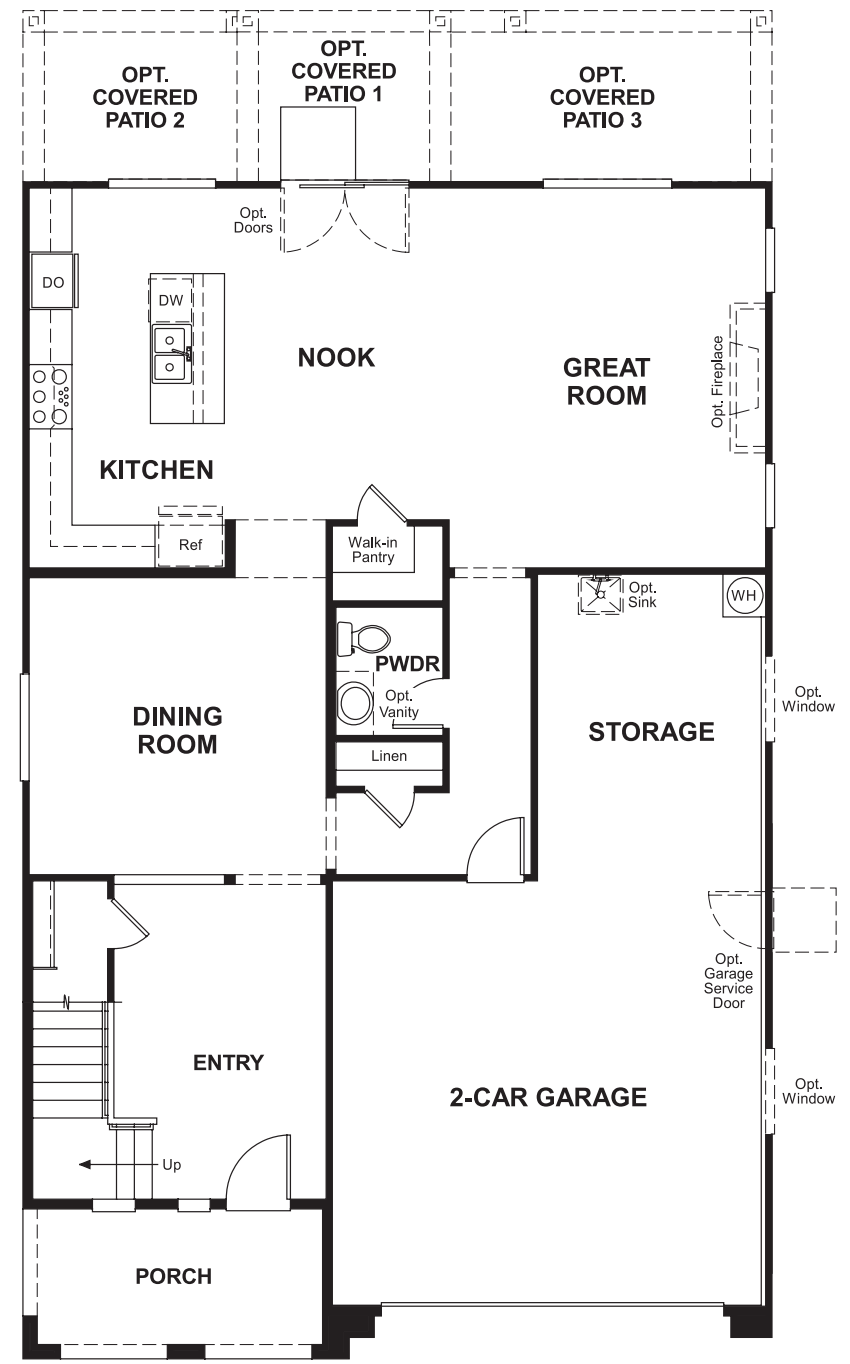


Skyline Ridge
BETHANY

Approx. square feet: 2,950
Stories: 2
Bedrooms: 4 - 6

Garage: 2-car
Plan Number: L29B

Floor Plan
Main Floor



Floor Plan
Second Floor

