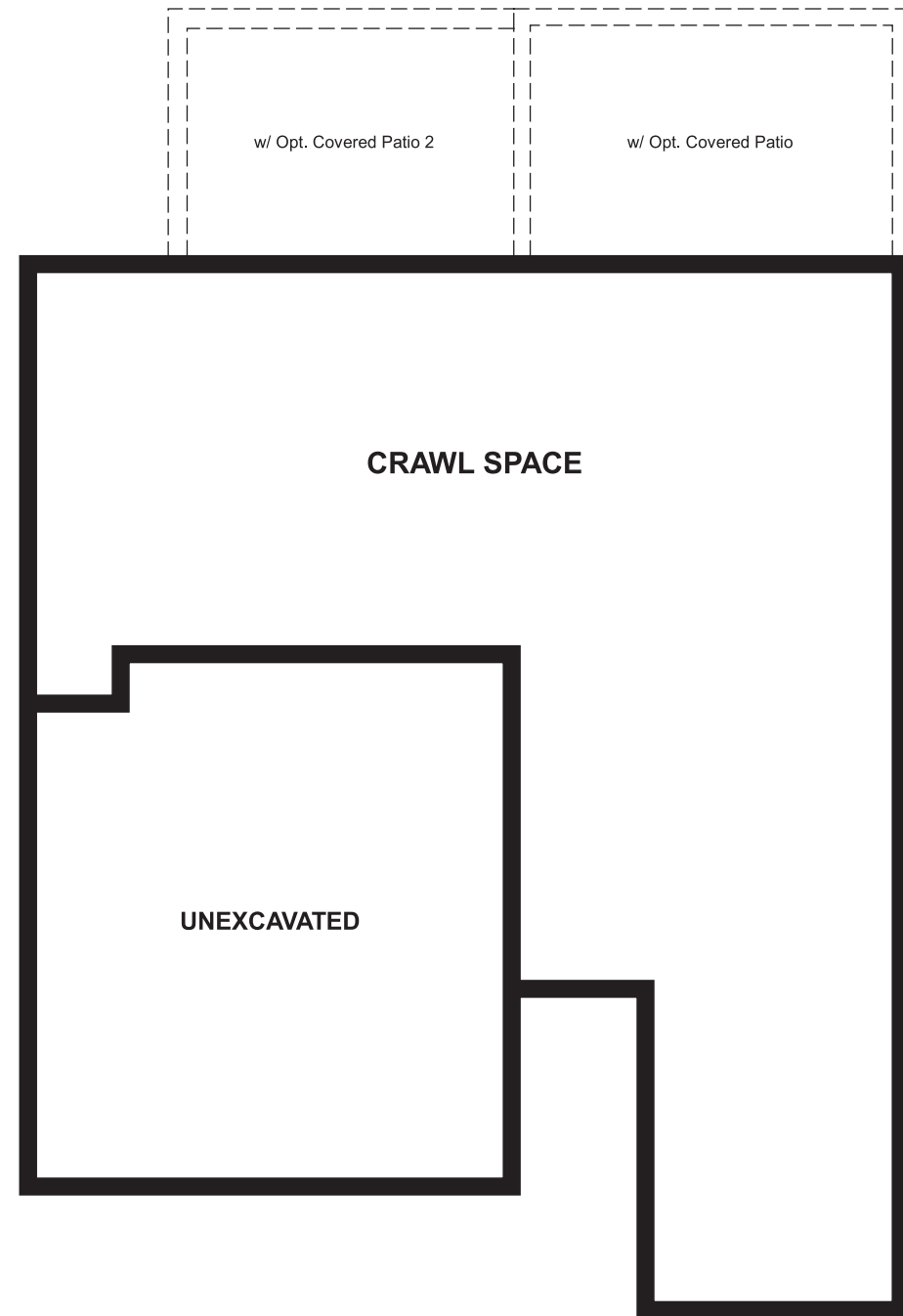


Copperleaf Ponderosa
CITRINE

Approx. square feet: 1,950
Stories: 2
Bedrooms: 3 - 4

Garage: 2-car
Plan Number: D904

Floor Plan
Crawl Space



Copperleaf Ponderosa
CITRINE

Approx. square feet: 1,950
Stories: 2
Bedrooms: 3 - 4
Garage: 2-car
Plan Number: D904



Elevation A

Imagine your life in this two-story home. Breakfast at the spacious kitchen island or in the nearby dining room. Spend the afternoon in your quiet study. Host a movie night in the inviting great room. At the end of the day, retreat upstairs to the master suite, complete with a roomy walk-in closet and private bath. Upstairs, you'll also enjoy two additional bedrooms, a convenient laundry and another full bath. A covered patio and a main-floor bedroom with full bath are available options.

Available elevations:



Elevation A



Elevation B



Elevation C

COMMUNITY LOCATION

Copperleaf Boulevard and South Tibet Street
Aurora, CO 80015
303-850-5750

HOME GALLERY

8000 East Belleview Avenue, Suite C-12
Greenwood Village, CO 80111
303-850-5750



COMMUNITY LOCATION

Copperleaf Boulevard and South Tibet Street
Aurora, CO 80015
303-850-5750

HOME GALLERY

8000 East Belleview Avenue, Suite C-12
Greenwood Village, CO 80111
303-850-5750

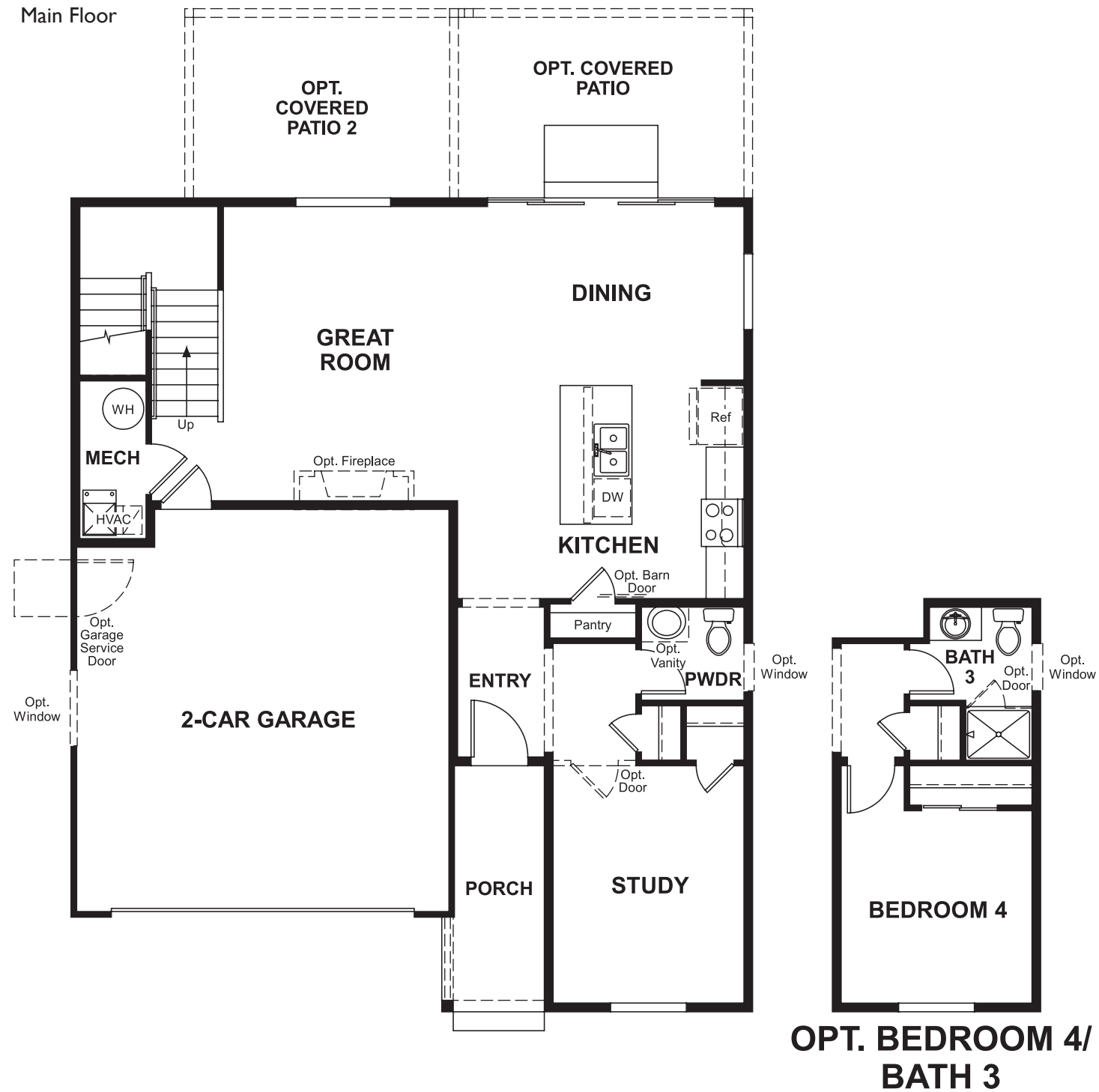


Copperleaf Ponderosa
CITRINE

Approx. square feet: 1,950
Stories: 2
Bedrooms: 3 - 4

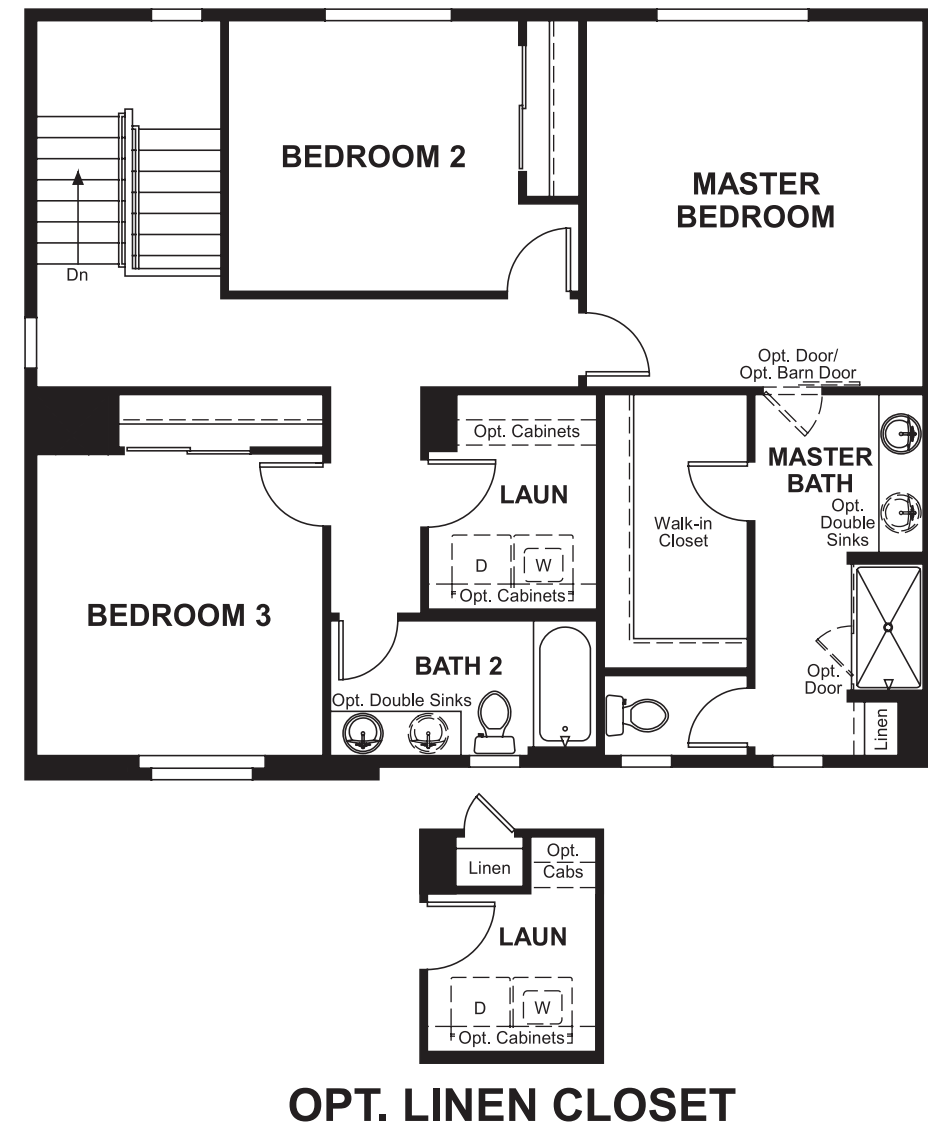
Garage: 2-car
Plan Number: D904

Floor Plan
Main Floor



**OPT. BEDROOM 4/
BATH 3**

Floor Plan
Second Floor



**THIS PLAN'S PROJECTED
HERS® INDEX = 61** *
Projected Rating Based on Plans – Field Confirmation Required

How does this floor plan rate?
Take a look: **100** = Standard new home* **130** = Typical resale home**
The lower the number, the better! Refer to the RESNET® HERS index brochure or go to www.RESNET.us for details.

What's a HERS® Index? HERS stands for Home Energy Rating System, a system created by RESNET® to measure home energy efficiency.[^]
A Projected HERS index or rating is a computer simulation performed prior to construction by a third-party HERS rater using RESNET-accredited rating software, rated feature and specification data derived from home plans, features and specifications, and other data selected or assumed by the rater. The projected HERS index is approximate and is subject to change without notice. Actual results will vary.

*This information is presented for education purposes only. The HERS index for a confirmed rating will be determined by a third-party HERS rater based on data gathered from on-site observations and, if required, testing of rated features for a home as featured, optioned, located, oriented and/or built.
+Standard new home is based on the RESNET® Reference Home definition with a HERS® index of 100 (based on the 2006 International Energy Conservation Code).
++Typical resale home is based on the U.S. Department of Energy definition with a HERS® index of 130.

[^]RESNET® has developed the HERS® index to indicate the comparative efficiencies of homes. It is no guarantee that energy efficiencies will be achieved.