

# DALLAS



**Elevation A**

**Approx. square feet:** 2,900

**Stories:** 2

**Bedrooms:** 3 - 5

**Garage:** 2- to 3-car

**Plan Number:** J599

A covered front porch and front- and side-entry garages give the Dallas plan abundant curb appeal. Inside, you'll find a study, a spacious dining room and an open great room that flows into a gourmet kitchen with an oversized island. The upstairs offers a loft, which can be optioned as an extra bedroom with full bath, and a relaxing master suite with an optional retreat. Other options include a guest suite, sunroom and club room.

**Available elevations:**



**Elevation A**



**Elevation B**



**Elevation C - shown with opt. stone**



**Elevation D**



**Elevation E**



**Elevation F**

**HOME GALLERY**  
1560 Wells Road, Building A, Suite 105  
Orange Park, FL 32073  
1-800-221-3014



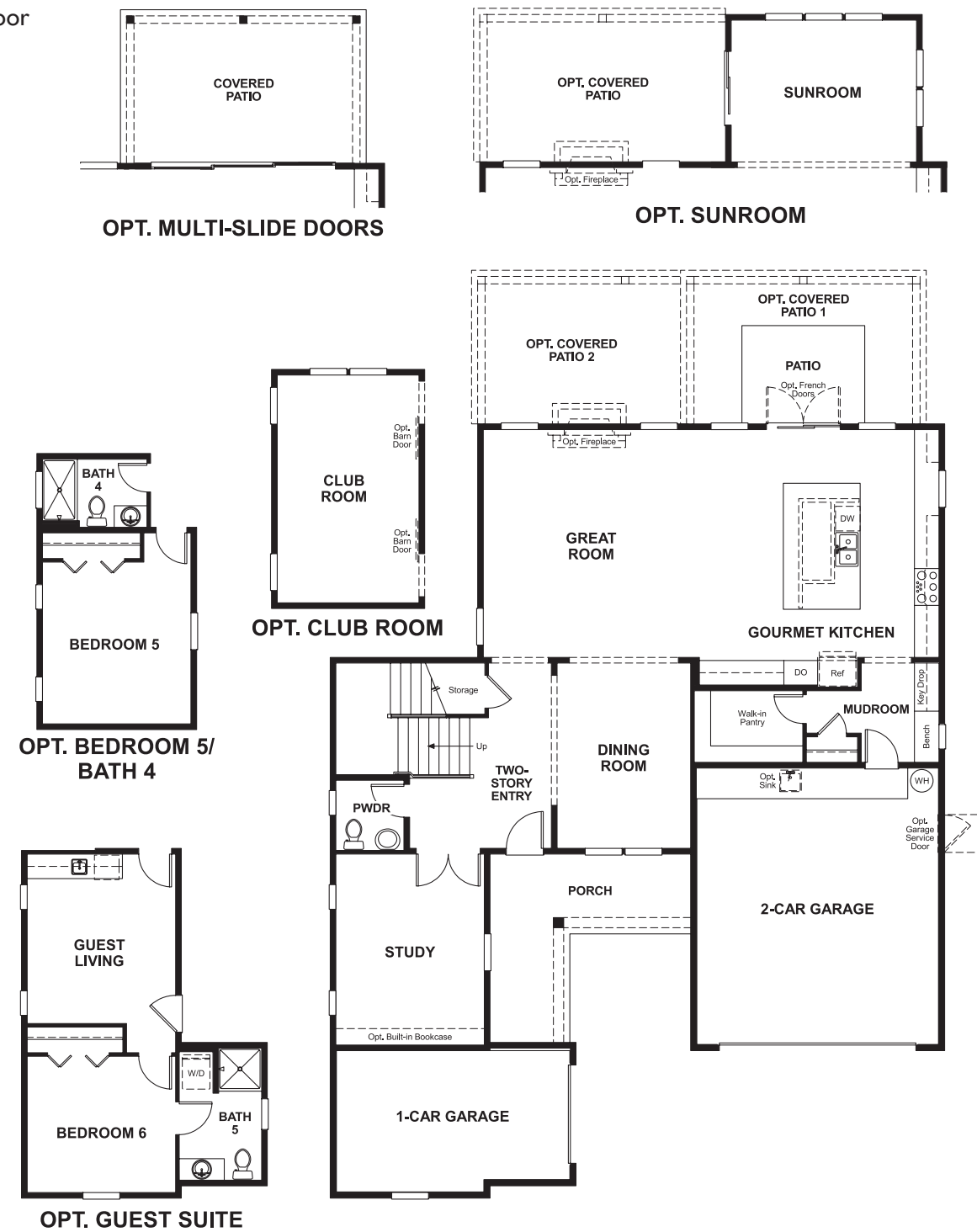
**HOME GALLERY**  
1560 Wells Road, Building A, Suite 105  
Orange Park, FL 32073  
1-800-221-3014



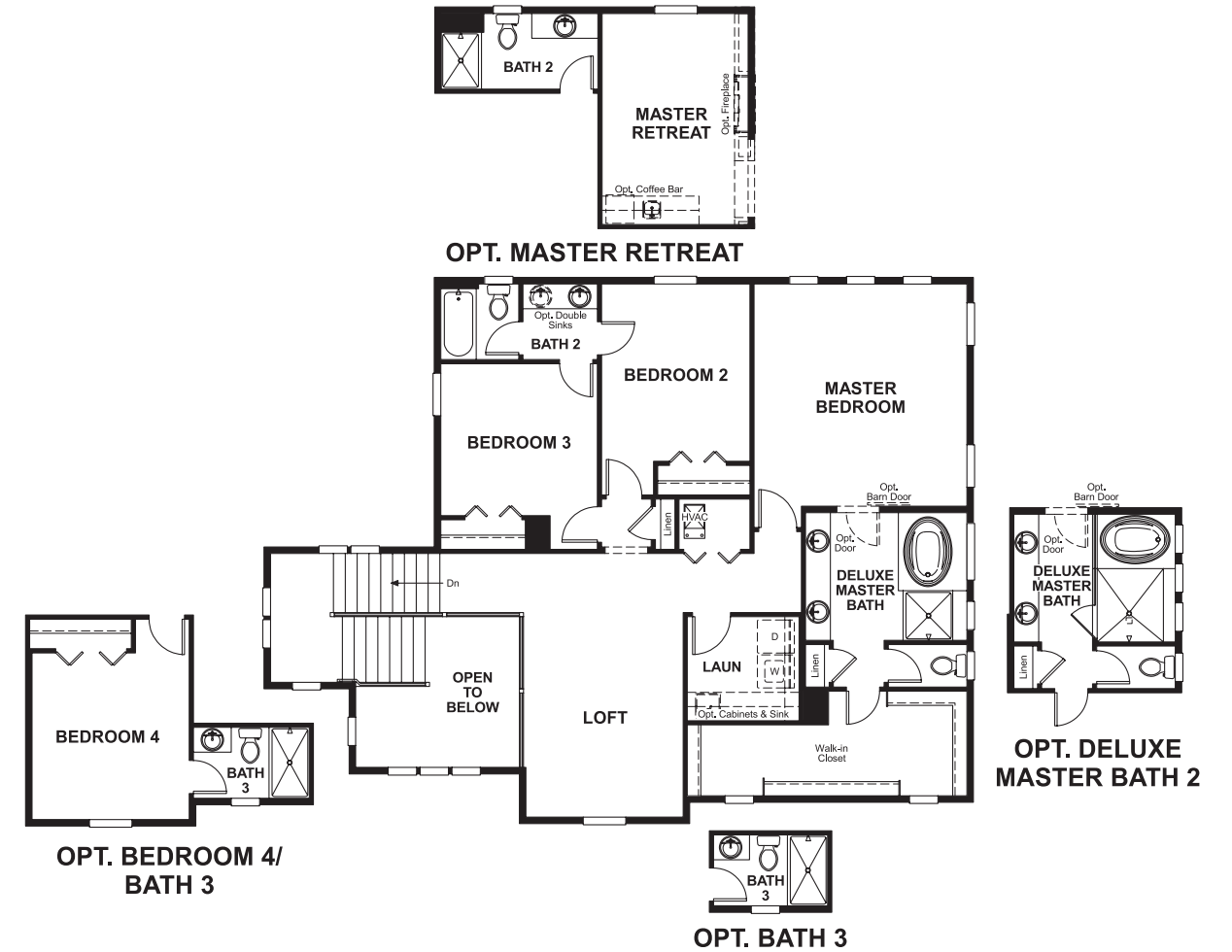
DALLAS

Approx. square feet: 2,900  
Stories: 2  
Bedrooms: 3 - 5  
Garage: 2- to 3-car  
Plan Number: J599

Floor Plan  
Main Floor



Floor Plan  
Second Floor



**THIS PLAN'S PROJECTED  
HERS® INDEX = 65\***  
Projected Rating Based on Plans – Field Confirmation Required

**How does this floor plan rate?**  
Take a look: **100** = Standard new home\* **130** = Typical resale home\*\*  
The lower the number, the better! Refer to the RESNET® HERS index brochure or go to [www.RESNET.us](http://www.RESNET.us) for details.

**What's a HERS® Index?** HERS stands for Home Energy Rating System, a system created by RESNET® to measure home energy efficiency. A Projected HERS index or rating is a computer simulation performed prior to construction by a third-party HERS rater using RESNET-accredited rating software, rated feature and specification data derived from home plans, features and specifications, and other data selected or assumed by the rater. The projected HERS index is approximate and is subject to change without notice. Actual results will vary.

\*This information is presented for education purposes only. The HERS index for a confirmed rating will be determined by a third-party HERS rater based on data gathered from on-site observations and, if required, testing of rated features for a home as featured, optioned, located, oriented and/or built.  
+Standard new home is based on the RESNET® Reference Home definition with a HERS® index of 100 (based on the 2006 International Energy Conservation Code).  
++Typical resale home is based on the U.S. Department of Energy definition with a HERS® index of 130.

^RESNET® has developed the HERS® index to indicate the comparative efficiencies of homes. It is no guarantee that energy efficiencies will be achieved.