

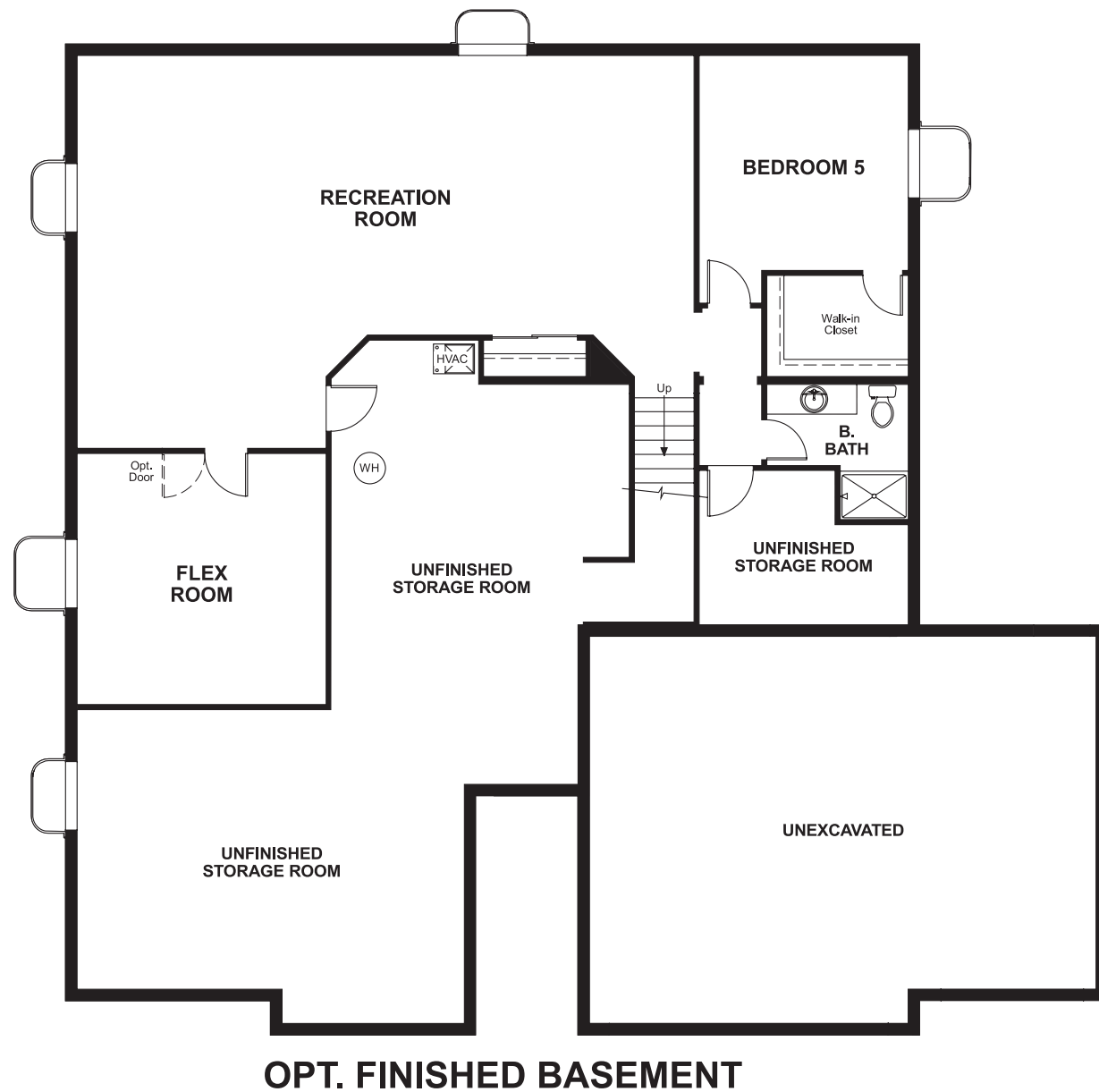
Timber Ridge
DANIEL

Approx. square feet: 2,300
Stories: 1
Bedrooms: 2 - 5

Garage: 3-car
Plan Number: D21D

Timber Ridge
DANIEL

Floor Plan
Basement



Elevation C

Available elevations:



Elevation C



Elevation D

Approx. square feet: 2,300
Stories: 1
Bedrooms: 2 - 5
Garage: 3-car
Plan Number: D21D

The master bedroom is removed from other bedrooms in the Daniel floor plan for added privacy and includes a deluxe bath. The gourmet kitchen is open to the spacious great room and dining room. The study can be optioned into a fourth bedroom and buyers can choose from numerous upgrades.

COMMUNITY LOCATION
5635 Water Oak Circle
Castle Rock, CO 80108
303-592-2060

HOME GALLERY
8000 East Belleview Avenue, Suite C-12
Greenwood Village, CO 80111
888-402-4063



COMMUNITY LOCATION
5635 Water Oak Circle
Castle Rock, CO 80108
303-592-2060

HOME GALLERY
8000 East Belleview Avenue, Suite C-12
Greenwood Village, CO 80111
888-402-4063

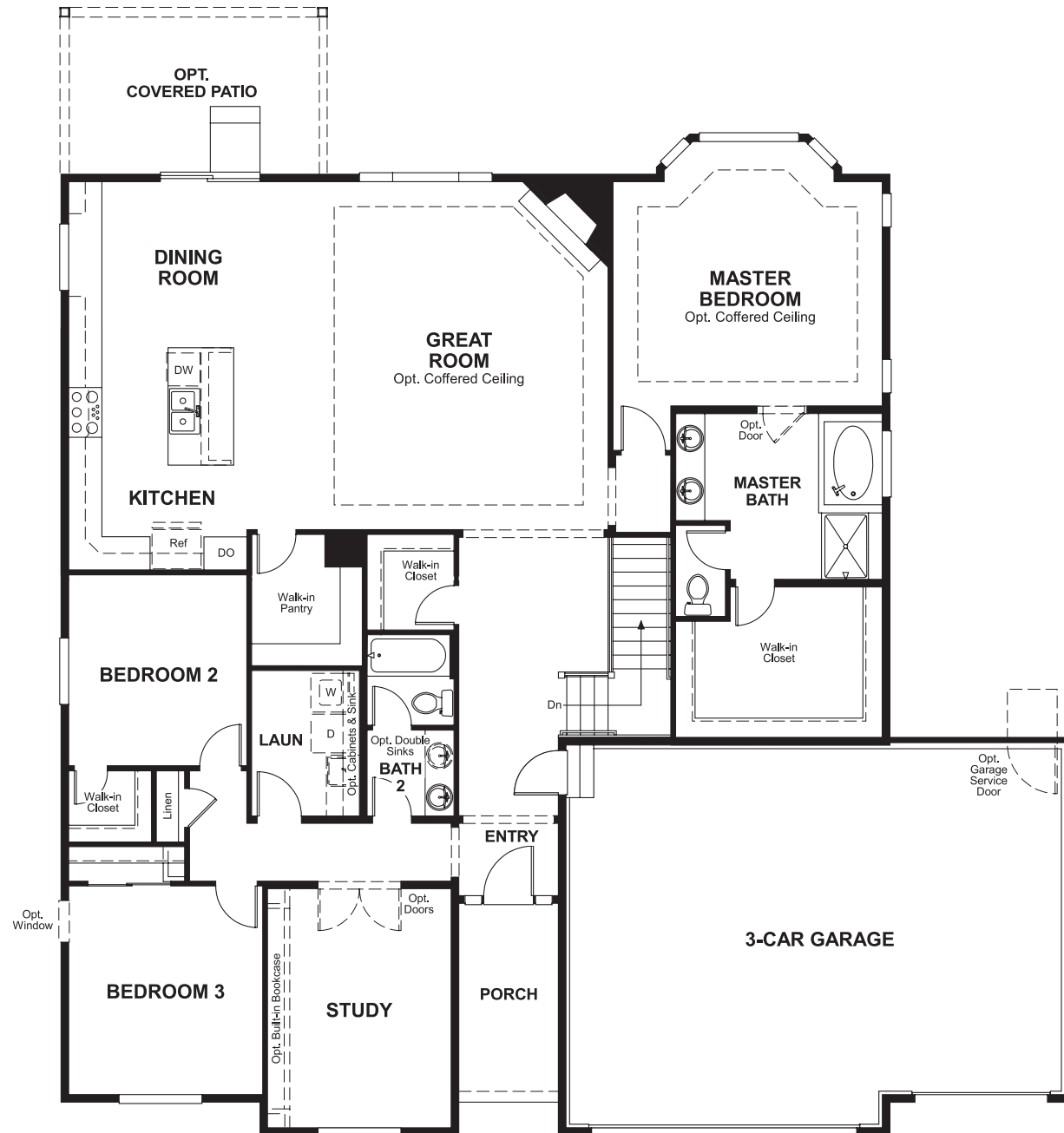


Timber Ridge
DANIEL

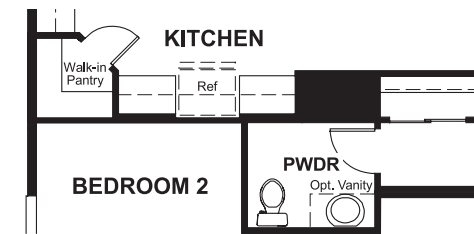
Approx. square feet: 2,300
Stories: 1
Bedrooms: 2 - 5

Garage: 3-car
Plan Number: D21D

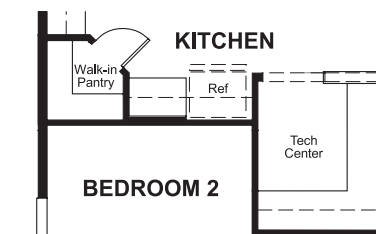
Floor Plan
Main Floor



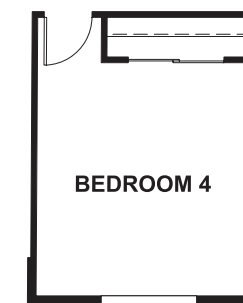
Floor Plan
Main Floor Options



OPT. POWDER ROOM



OPT. TECH CENTER



OPT. BEDROOM 4

**THIS PLAN'S PROJECTED
HERS® INDEX = 60***
Projected Rating Based on Plans – Field Confirmation Required

How does this floor plan rate?
Take a look: **100** = Standard new home* **130** = Typical resale home**
The lower the number, the better! Refer to the RESNET® HERS index brochure or go to www.RESNET.us for details.

What's a HERS® Index? HERS stands for Home Energy Rating System, a system created by RESNET® to measure home energy efficiency.[^]
A Projected HERS index or rating is a computer simulation performed prior to construction by a third-party HERS rater using RESNET-accredited rating software, rated feature and specification data derived from home plans, features and specifications, and other data selected or assumed by the rater. The projected HERS index is approximate and is subject to change without notice. Actual results will vary.

*This information is presented for education purposes only. The HERS index for a confirmed rating will be determined by a third-party HERS rater based on data gathered from on-site observations and, if required, testing of rated features for a home as featured, optioned, located, oriented and/or built.
+Standard new home is based on the RESNET® Reference Home definition with a HERS® index of 100 (based on the 2006 International Energy Conservation Code).
**Typical resale home is based on the U.S. Department of Energy definition with a HERS® index of 130.

[^]RESNET® has developed the HERS® index to indicate the comparative efficiencies of homes. It is no guarantee that energy efficiencies will be achieved.