

Cascade at Marley Park
DANIEL



Elevation A

Approx. square feet: 2,100
Stories: 1
Bedrooms: 3
Garage: 3-car
Plan Number: P21D

The Daniel is a charming ranch home with thoughtful design details. The great room is open to the kitchen, which includes a convenient walk-in pantry and center island. The spacious master bedroom features a generous walk-in closet and a deluxe bath. Options include a gourmet kitchen and a built-in bookcase and french doors in the study.

Available elevations:



Elevation A



Elevation B



Elevation C



Elevation D



COMMUNITY LOCATION
15283 West Charter Oak Road
Surprise, AZ 85379
877-444-1485

HOME GALLERY
16427 North Scottsdale Road, Suite 175
Scottsdale, AZ 85254
877-444-1485



COMMUNITY LOCATION
15283 West Charter Oak Road
Surprise, AZ 85379
877-444-1485

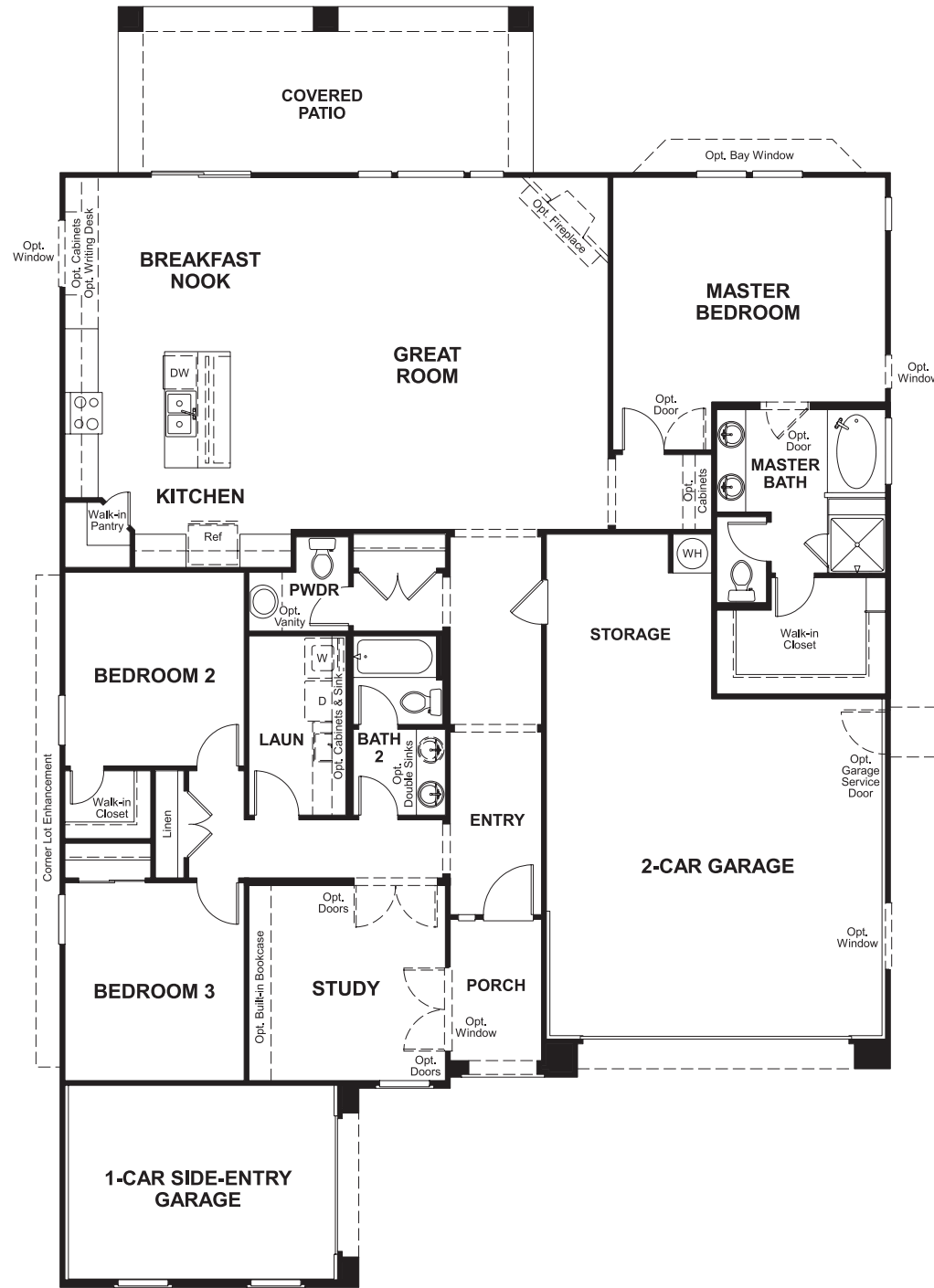
HOME GALLERY
16427 North Scottsdale Road, Suite 175
Scottsdale, AZ 85254
877-444-1485

Cascade at Marley Park
DANIEL

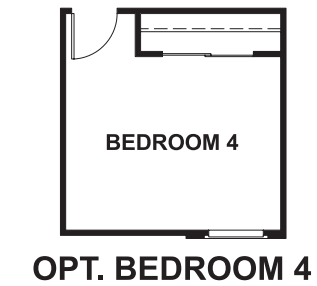
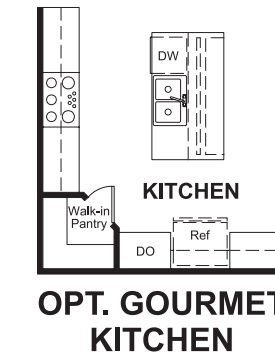
Approx. square feet: 2,100
Stories: 1
Bedrooms: 3

Garage: 3-car
Plan Number: P21D

Floor Plan
First Floor



Floor Plan
First Floor Options



**THIS PLAN'S PROJECTED
HERS® INDEX = 67***
Projected Rating Based on Plans – Field Confirmation Required

How does this floor plan rate?
Take a look: **100** = Standard new home* **130** = Typical resale home**
The lower the number, the better! Refer to the RESNET® HERS index brochure or go to www.RESNET.us for details.

What's a HERS® Index? HERS stands for Home Energy Rating System, a system created by RESNET® to measure home energy efficiency. A Projected HERS index or rating is a computer simulation performed prior to construction by a third-party HERS rater using RESNET-accredited rating software, rated feature and specification data derived from home plans, features and specifications, and other data selected or assumed by the rater. The projected HERS index is approximate and is subject to change without notice. Actual results will vary.

*This information is presented for education purposes only. The HERS index for a confirmed rating will be determined by a third-party HERS rater based on data gathered from on-site observations and, if required, testing of rated features for a home as featured, optioned, located, oriented and/or built.
+Standard new home is based on the RESNET® Reference Home definition with a HERS® index of 100 (based on the 2006 International Energy Conservation Code).
**Typical resale home is based on the U.S. Department of Energy definition with a HERS® index of 130.

^RESNET® has developed the HERS® index to indicate the comparative efficiencies of homes. It is no guarantee that energy efficiencies will be achieved.