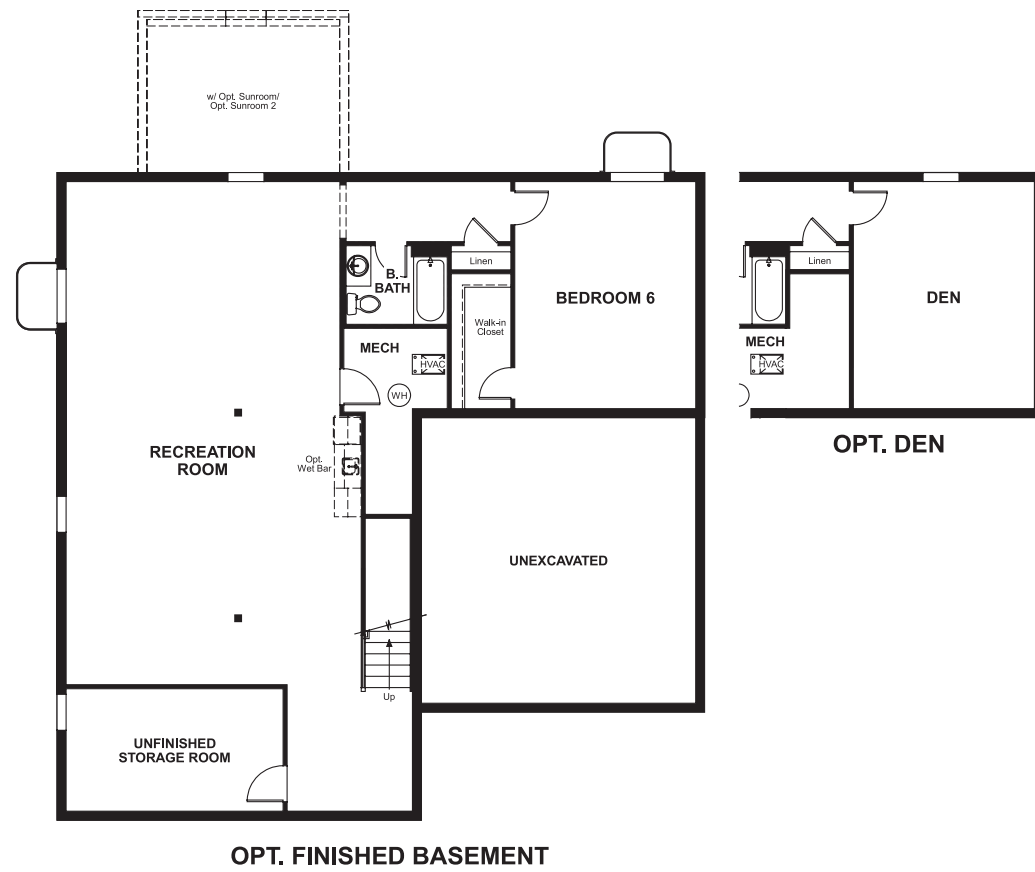


DANIKA

Approx. square feet: 3,700
Stories: 2
Bedrooms: 4 - 6

Garage: 2-car
Plan Number: M37D

Floor Plan
Basement



DANIKA

Approx. square feet: 3,700
Stories: 2
Bedrooms: 4 - 6
Garage: 2-car
Plan Number: M37D

A wide covered porch gives the Danika major curb appeal. Inside, the main floor features a formal dining room and plenty of options for personalization, from gourmet kitchen features to a front-facing study. On the second floor, you'll find a lavish master retreat complete with two walk-in closets. Choose to add a finished basement with optional den.



Elevation A

Available elevations:



Elevation A



Elevation B



Elevation C



Elevation D



Elevation E



Elevation F



Elevation G



Elevation H



Elevation I



Elevation K

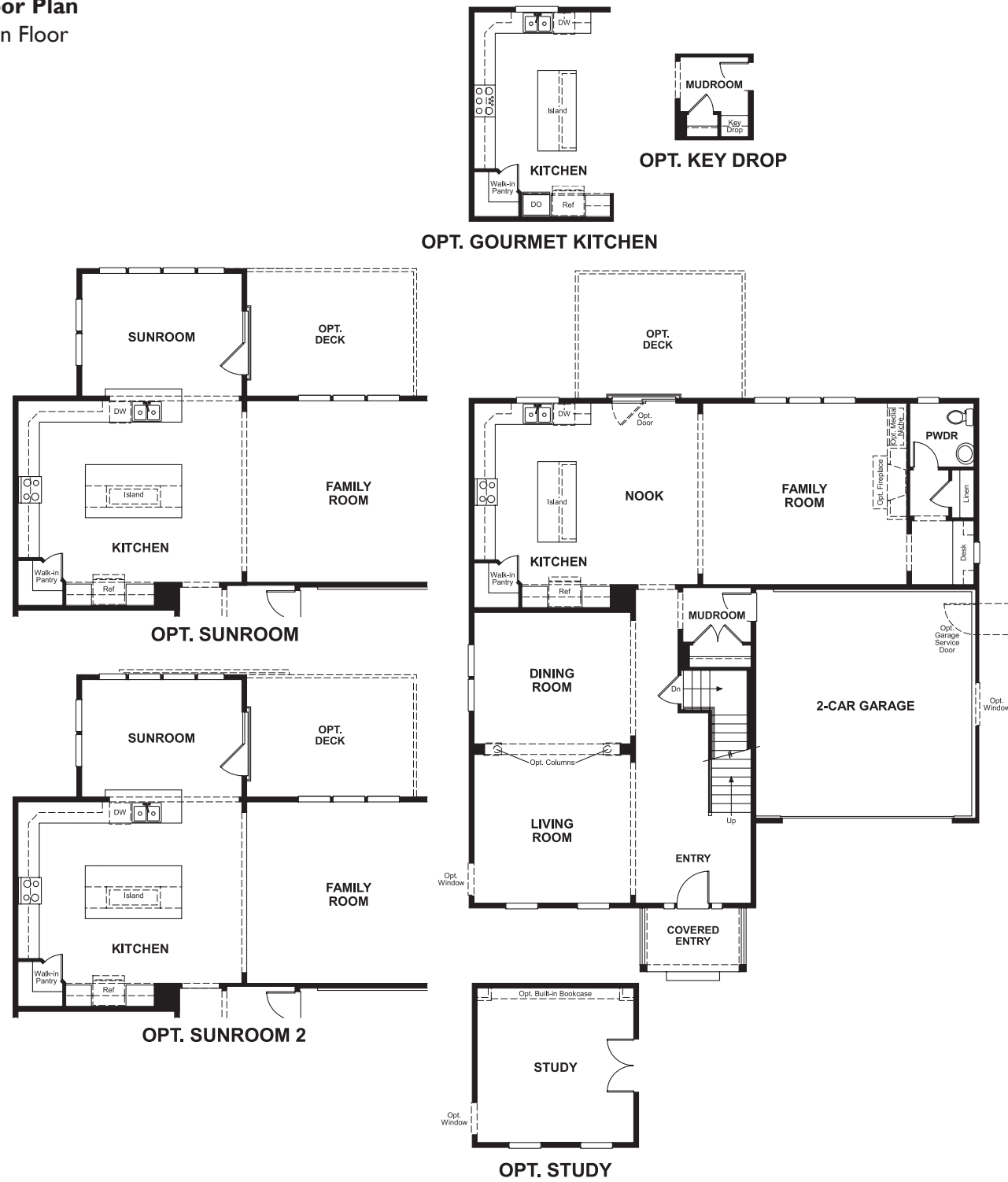


DANIKA

Approx. square feet: 3,700
Stories: 2
Bedrooms: 4 - 6

Garage: 2-car
Plan Number: M37D

Floor Plan Main Floor



Floor Plan Second Floor

