

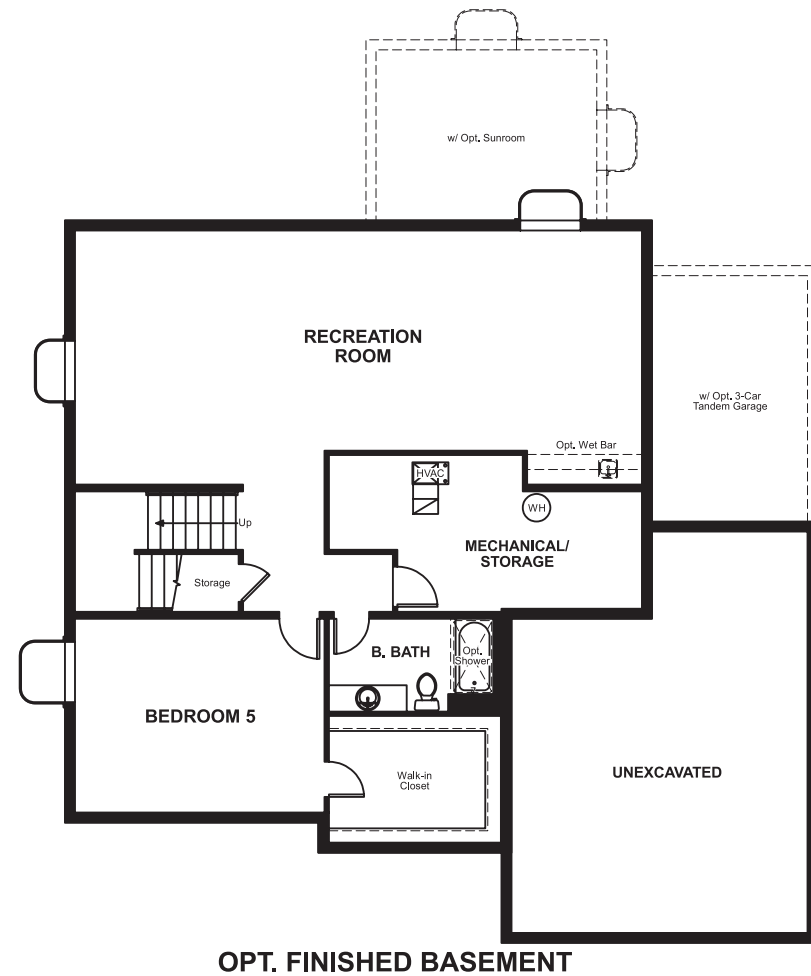
Anthology West
DARCY

Approx. square feet: 2,800
Stories: 2
Bedrooms: 3 - 5

Garage: 2- to 3-Car
Plan Number: D714

Anthology West
DARCY

Floor Plan
Basement



Elevation A

Available elevations:



Elevation A



Elevation B



Elevation C



Elevation D

Approx. square feet: 2,800
Stories: 2
Bedrooms: 3 - 5
Garage: 2- to 3-Car
Plan Number: D714

The handsome Darcy floor plan offers a wealth of gracious spaces for relaxing, working and entertaining. Just off the entry, you'll find a study with optional double doors and a flex room that can be built as a dining room with a butler's pantry. Toward the back of the home, there's a wide open great room, nook and kitchen, complete with center island, walk-in pantry and mudroom access to the garage. A convenient loft, laundry and luxurious master suite are located upstairs, along with two additional bedrooms and a hall bath. Personalize with a sunroom, deluxe bath options and a covered patio.

COMMUNITY LOCATION

North Motesbocker Road & Keyser Creek Avenue
Parker, CO 80134
303-850-5750

HOME GALLERY

8000 East Belleview Avenue, Suite C-12
Greenwood Village, CO 80111
888-402-4663



COMMUNITY LOCATION

North Motesbocker Road & Keyser Creek Avenue
Parker, CO 80134
303-850-5750

HOME GALLERY

8000 East Belleview Avenue, Suite C-12
Greenwood Village, CO 80111
888-402-4663

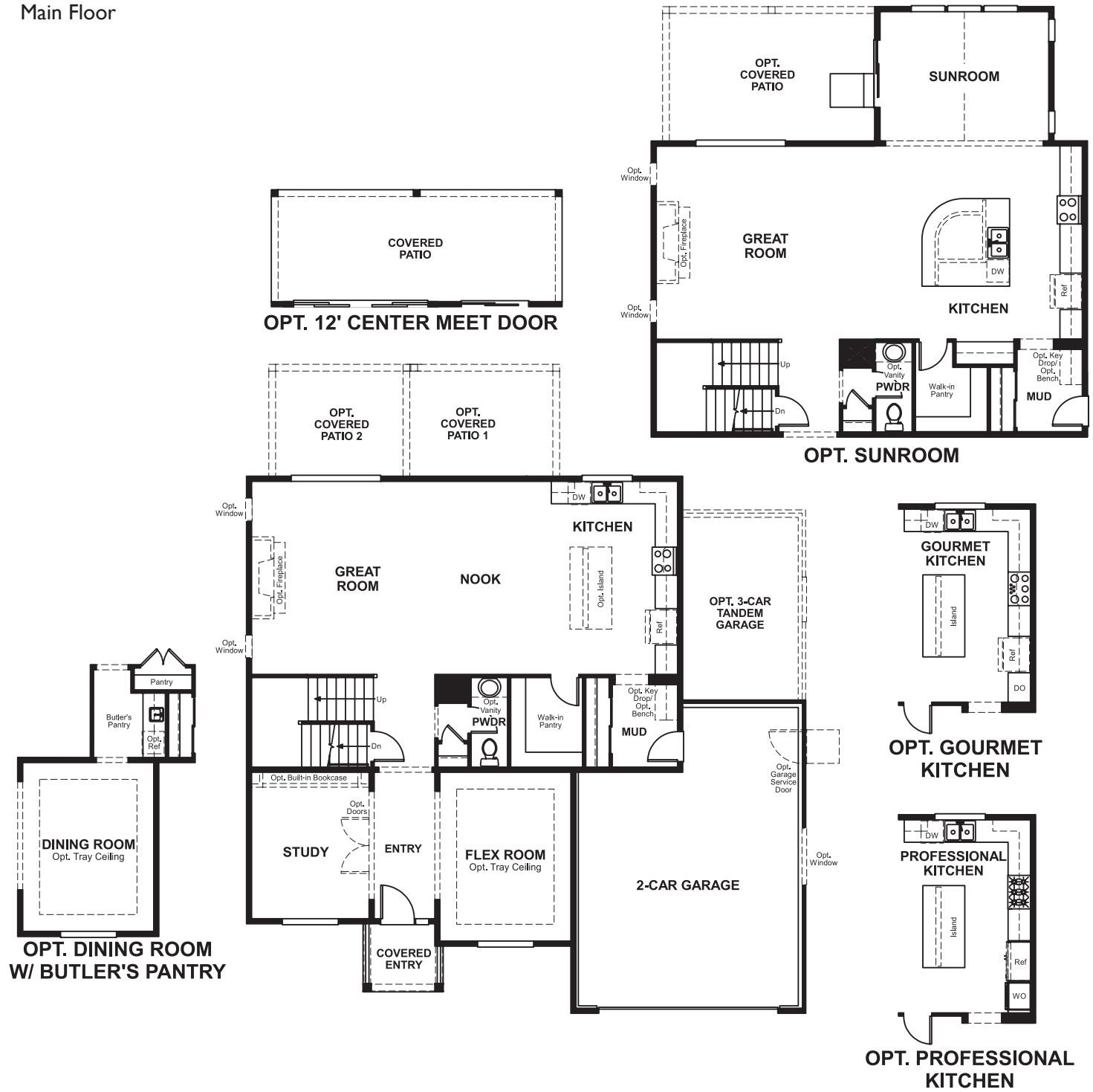


Anthology West
DARCY

Approx. square feet: 2,800
Stories: 2
Bedrooms: 3 - 5

Garage: 2- to 3-Car
Plan Number: D714

Floor Plan
Main Floor



Floor Plan
Second Floor

