

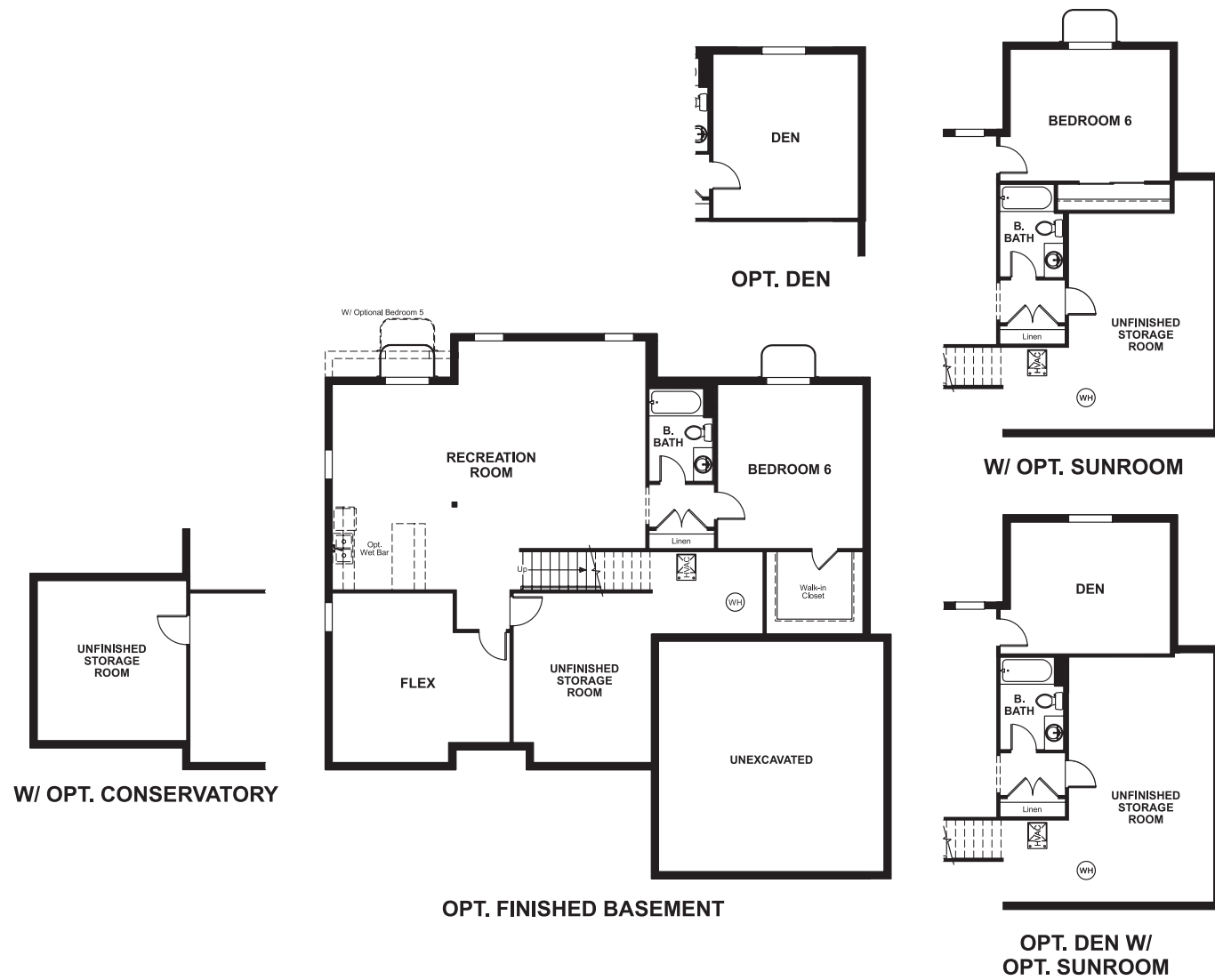
Aldie Estates
DARLA

Approx. square feet: 3,122
Stories: 2
Bedrooms: 4 - 6

Garage: 2- to 3-car
Plan Number: V312

Aldie Estates
DARLA

Floor Plan
Basement



Elevation C

Available elevations:



Elevation C



Elevation D



Elevation E



Elevation F

Approx. square feet: 3,122
Stories: 2
Bedrooms: 4 - 6
Garage: 2- to 3-car
Plan Number: V312

The charming Darla plan features formal living and dining rooms, an open family room and a private rear den. Plus, the comfy corner kitchen offers granite counter tops. All bedrooms feature spacious walk-in closets.

COMMUNITY LOCATION
23917 Tenbury Wells Place
Aldie, VA 20105
703-348-0025

HOME GALLERY
11393 Government Center Parkway
Fairfax, VA 22030
703-348-0025



COMMUNITY LOCATION
23917 Tenbury Wells Place
Aldie, VA 20105
703-348-0025

HOME GALLERY
11393 Government Center Parkway
Fairfax, VA 22030
703-348-0025

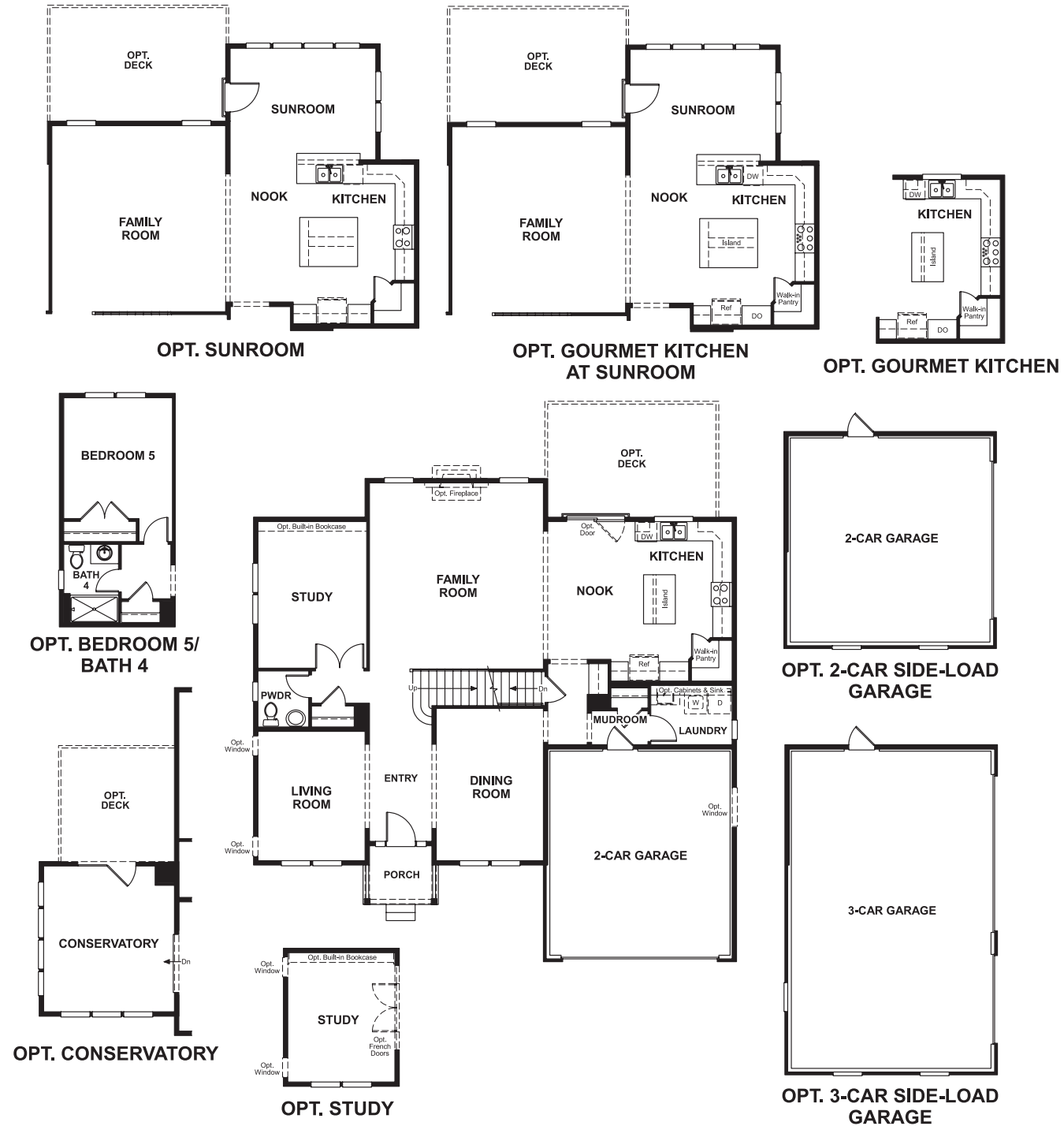


Aldie Estates
DARLA

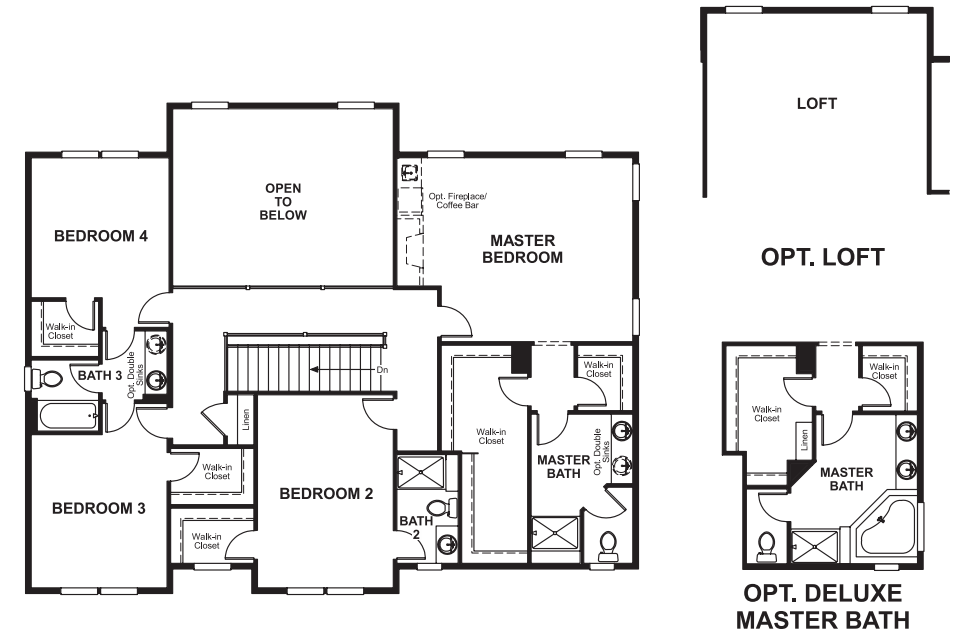
Approx. square feet: 3,122
Stories: 2
Bedrooms: 4 - 6

Garage: 2- to 3-car
Plan Number: V312

Floor Plan
Main Floor



Floor Plan
Second Floor



THIS PLAN'S PROJECTED HERS® INDEX = 67*
Projected Rating Based on Plans – Field Confirmation Required

How does this floor plan rate?
Take a look: 100 = Standard new home* 130 = Typical resale home**
The lower the number, the better! Refer to the RESNET® HERS index brochure or go to www.RESNET.us for details.

What's a HERS® Index? HERS stands for Home Energy Rating System, a system created by RESNET® to measure home energy efficiency.[^]
A Projected HERS index or rating is a computer simulation performed prior to construction by a third-party HERS rater using RESNET-accredited rating software, rated feature and specification data derived from home plans, features and specifications, and other data selected or assumed by the rater. The projected HERS index is approximate and is subject to change without notice. Actual results will vary.

*This information is presented for education purposes only. The HERS index for a confirmed rating will be determined by a third-party HERS rater based on data gathered from on-site observations and, if required, testing of rated features for a home as featured, optioned, located, oriented and/or built.
+Standard new home is based on the RESNET® Reference Home definition with a HERS® index of 100 (based on the 2006 International Energy Conservation Code).
++Typical resale home is based on the U.S. Department of Energy definition with a HERS® index of 130.

[^]RESNET® has developed the HERS® index to indicate the comparative efficiencies of homes. It is no guarantee that energy efficiencies will be achieved.