

Yukon Park at Anthem  
**DARLA**

**Approx. square feet:** 3,100  
**Stories:** 2  
**Bedrooms:** 4 - 6

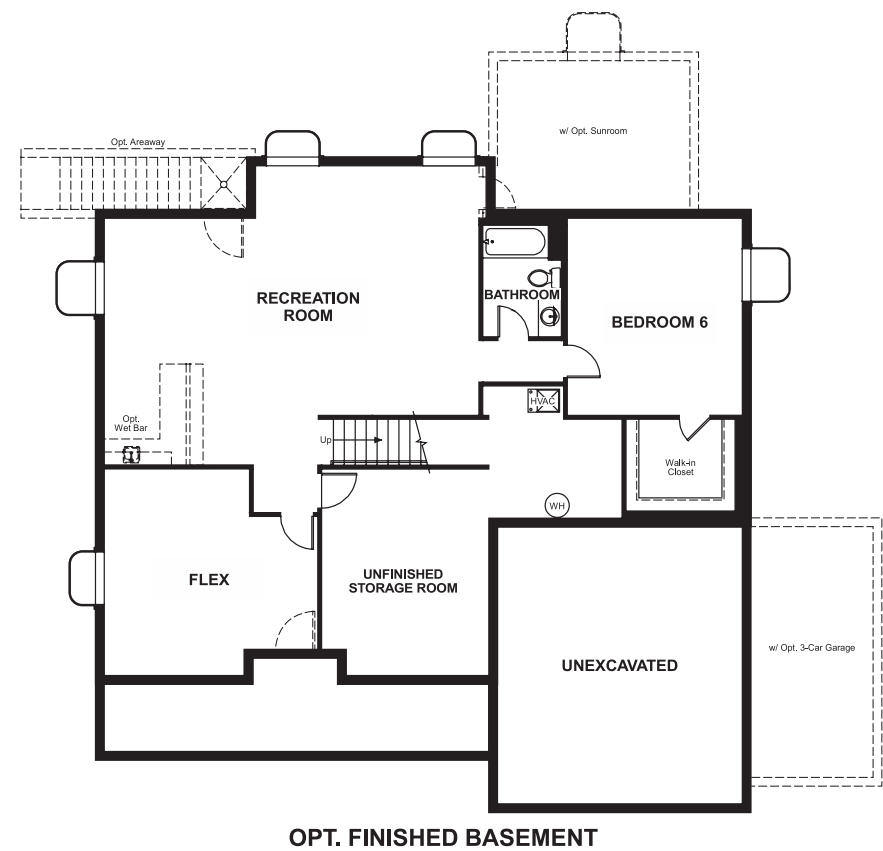
**Garage:** 2 to 3-car  
**Plan Number:** U312

Yukon Park at Anthem  
**DARLA**

**Approx. square feet:** 3,100  
**Stories:** 2  
**Bedrooms:** 4 - 6  
**Garage:** 2 to 3-car  
**Plan Number:** U312

The Darla is perfect for entertaining, with an expansive two-story family room and formal living and dining rooms. The elegant kitchen includes a walk-in pantry and overlooks a convenient breakfast nook. Upstairs, the private master bedroom features two walk-in closets for ultimate comfort. Options for personalization include a 3-car garage, gourmet kitchen or deluxe master bath.

**Floor Plan**  
Basement



**Elevation E**

**Available elevations:**



**Elevation E**



**Elevation F**



**Elevation G**



**Elevation H**

**COMMUNITY LOCATION**  
5637 West Yukon Park Lane  
Herriman, UT 84096  
801-545-3429

**HOME GALLERY**  
849 West Levoy Drive, Suite 108  
Salt Lake City, UT 84123  
801-545-3435



**COMMUNITY LOCATION**  
5637 West Yukon Park Lane  
Herriman, UT 84096  
801-545-3429

**HOME GALLERY**  
849 West Levoy Drive, Suite 108  
Salt Lake City, UT 84123  
801-545-3435

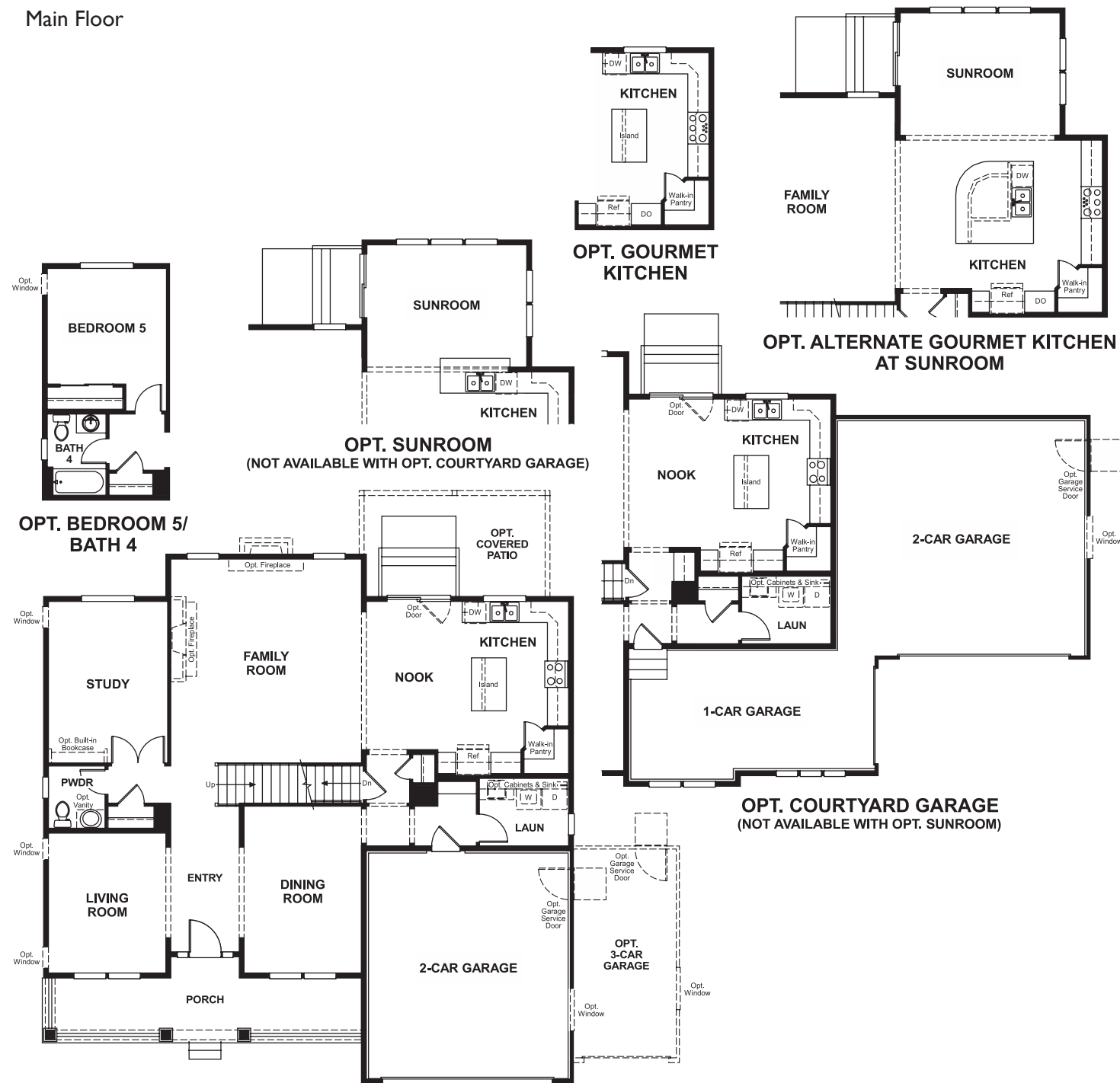


Yukon Park at Anthem  
**DARLA**

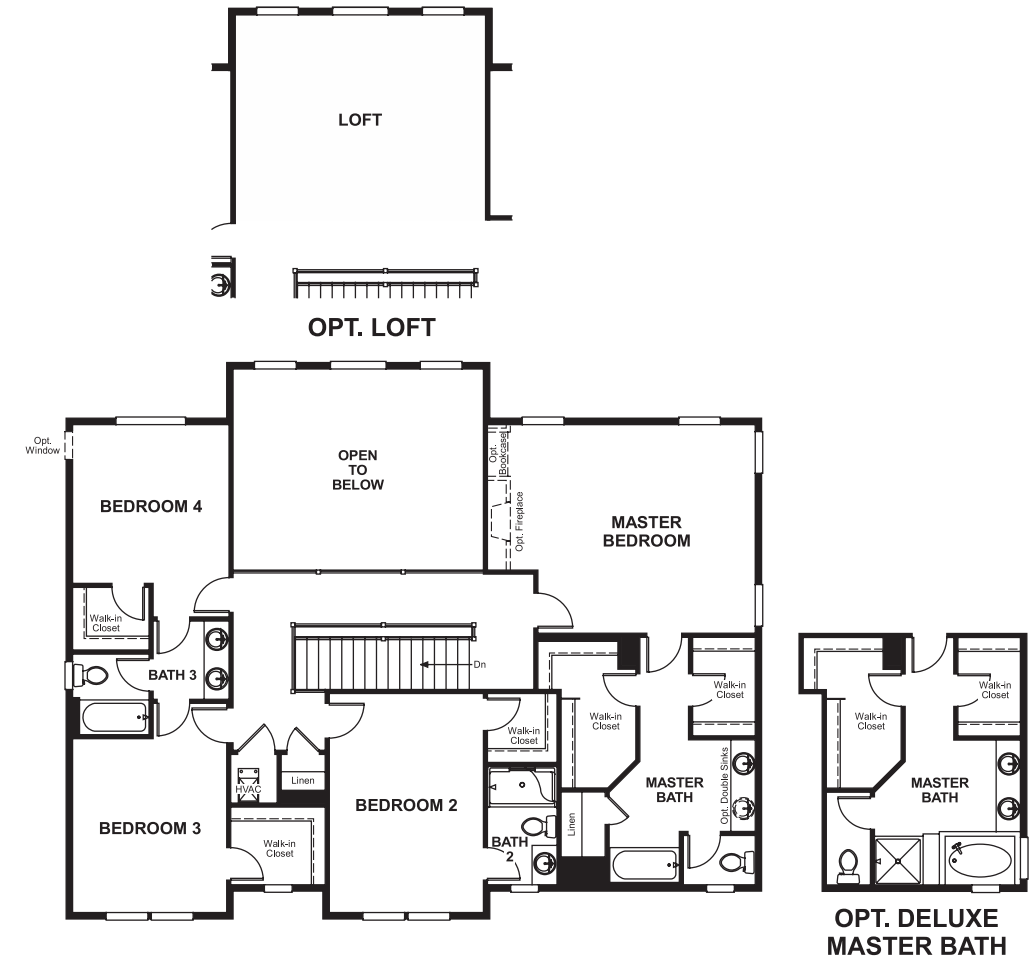
**Approx. square feet:** 3,100  
**Stories:** 2  
**Bedrooms:** 4 - 6

**Garage:** 2 to 3-car  
**Plan Number:** U312

**Floor Plan**  
Main Floor



**Floor Plan**  
Second Floor



**THIS PLAN'S PROJECTED HERS® INDEX = 57\***  
Projected Rating Based on Plans – Field Confirmation Required

**How does this floor plan rate?**  
Take a look: **100** = Standard new home\* **130** = Typical resale home\*\*  
The lower the number, the better! Refer to the RESNET® HERS index brochure or go to [www.RESNET.us](http://www.RESNET.us) for details.

**What's a HERS® Index?** HERS stands for Home Energy Rating System, a system created by RESNET® to measure home energy efficiency.<sup>^</sup>  
A Projected HERS index or rating is a computer simulation performed prior to construction by a third-party HERS rater using RESNET-accredited rating software, rated feature and specification data derived from home plans, features and specifications, and other data selected or assumed by the rater. The projected HERS index is approximate and is subject to change without notice. Actual results will vary.

\*This information is presented for education purposes only. The HERS index for a confirmed rating will be determined by a third-party HERS rater based on data gathered from on-site observations and, if required, testing of rated features for a home as featured, optioned, located, oriented and/or built.  
+Standard new home is based on the RESNET® Reference Home definition with a HERS® index of 100 (based on the 2006 International Energy Conservation Code).  
++Typical resale home is based on the U.S. Department of Energy definition with a HERS® index of 130.

<sup>^</sup>RESNET® has developed the HERS® index to indicate the comparative efficiencies of homes. It is no guarantee that energy efficiencies will be achieved.