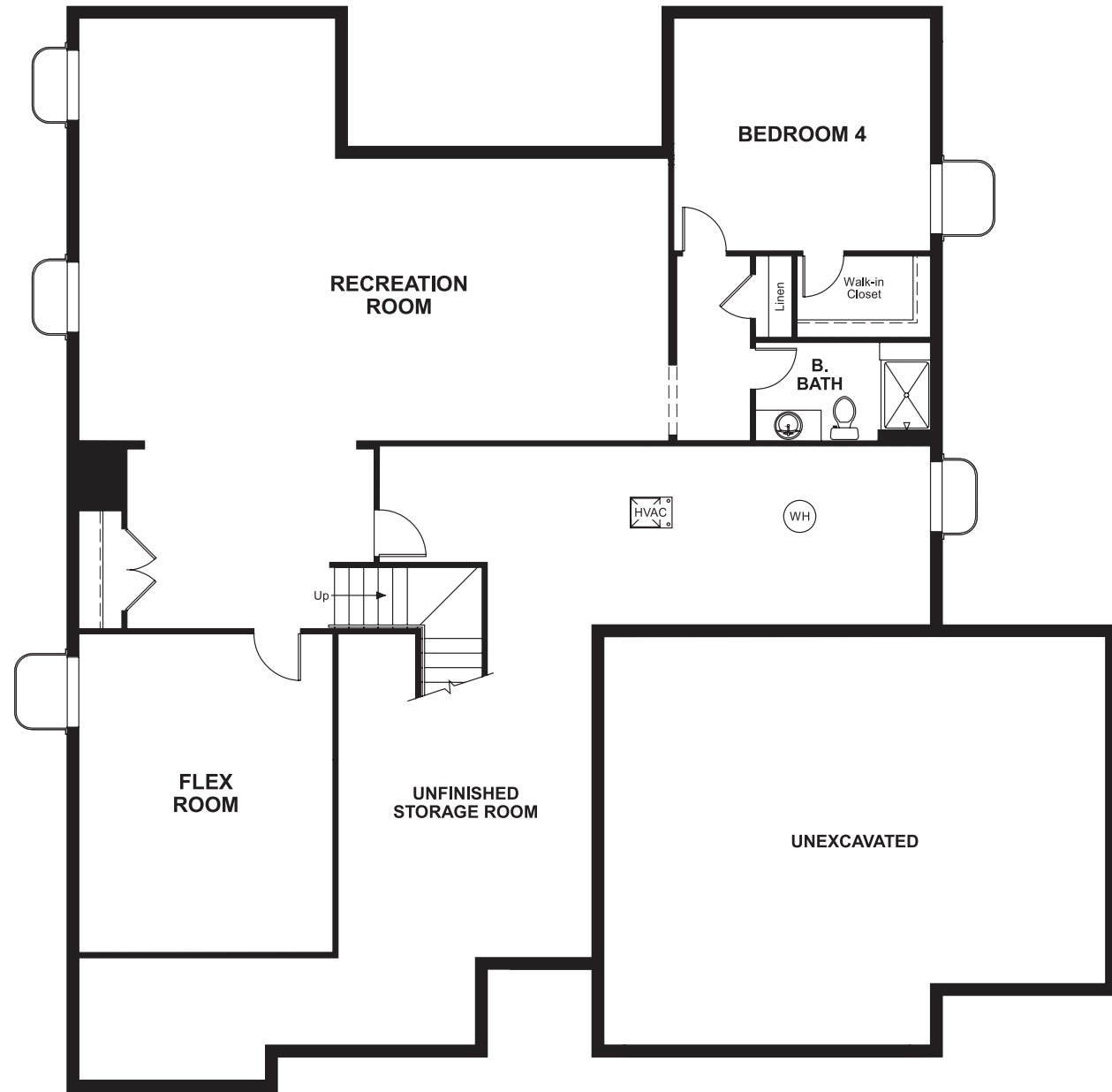


Timber Ridge
DELANEY

Approx. square feet: 2,400
Stories: 1
Bedrooms: 2 - 4

Garage: 3-car
Plan Number: D22D

Floor Plan
Basement



OPT. FINISHED BASEMENT

COMMUNITY LOCATION
5635 Water Oak Circle
Castle Rock, CO 80108
303-592-2060

HOME GALLERY
8000 East Belleview Avenue, Suite C12
Greenwood Village, CO 80111
888-402-4063



Timber Ridge
DELANEY

Approx. square feet: 2,400
Stories: 1
Bedrooms: 2 - 4
Garage: 3-car
Plan Number: D22D

The entry of the ranch-style Delaney floor plan leads to a generous great room and kitchen with walk-in pantry and central island. The master bedroom is located away from the other bedroom for added privacy. A quiet study, convenient laundry, formal dining room and covered patio complete the design.



Elevation C

Available elevations:



Elevation C



Elevation D

COMMUNITY LOCATION
5635 Water Oak Circle
Castle Rock, CO 80108
303-592-2060

HOME GALLERY
8000 East Belleview Avenue, Suite C12
Greenwood Village, CO 80111
888-402-4063

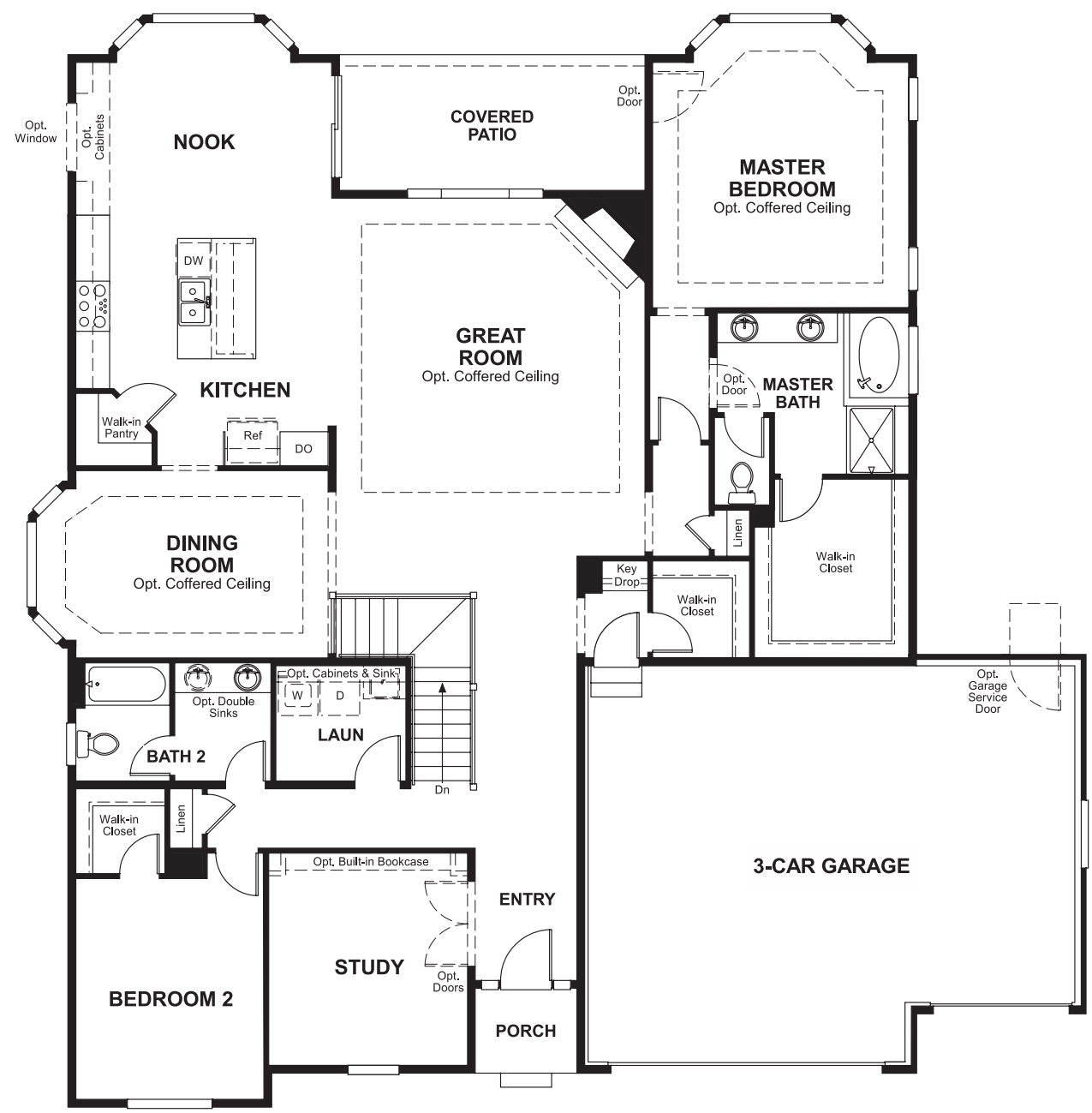


Timber Ridge
DELANEY

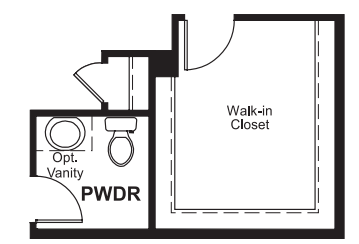
Approx. square feet: 2,400
Stories: 1
Bedrooms: 2 - 4

Garage: 3-car
Plan Number: D22D

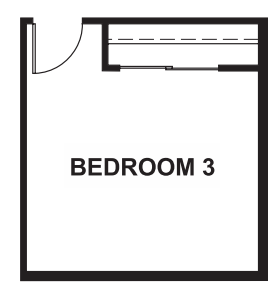
Floor Plan
Main Floor



Floor Plan
Main Floor Options



OPT. POWDER ROOM



OPT. BEDROOM 3

THIS PLAN'S PROJECTED HERS® INDEX = 60*
Projected Rating Based on Plans – Field Confirmation Required

How does this floor plan rate?
Take a look: **100** = Standard new home* **130** = Typical resale home**
The lower the number, the better! Refer to the RESNET® HERS index brochure or go to www.RESNET.us for details.

What's a HERS® Index? HERS stands for Home Energy Rating System, a system created by RESNET® to measure home energy efficiency.[^]
A Projected HERS index or rating is a computer simulation performed prior to construction by a third-party HERS rater using RESNET-accredited rating software, rated feature and specification data derived from home plans, features and specifications, and other data selected or assumed by the rater. The projected HERS index is approximate and is subject to change without notice. Actual results will vary.

*This information is presented for education purposes only. The HERS index for a confirmed rating will be determined by a third-party HERS rater based on data gathered from on-site observations and, if required, testing of rated features for a home as featured, optioned, located, oriented and/or built.
+Standard new home is based on the RESNET® Reference Home definition with a HERS® index of 100 (based on the 2006 International Energy Conservation Code).
++Typical resale home is based on the U.S. Department of Energy definition with a HERS® index of 130.

[^]RESNET® has developed the HERS® index to indicate the comparative efficiencies of homes. It is no guarantee that energy efficiencies will be achieved.