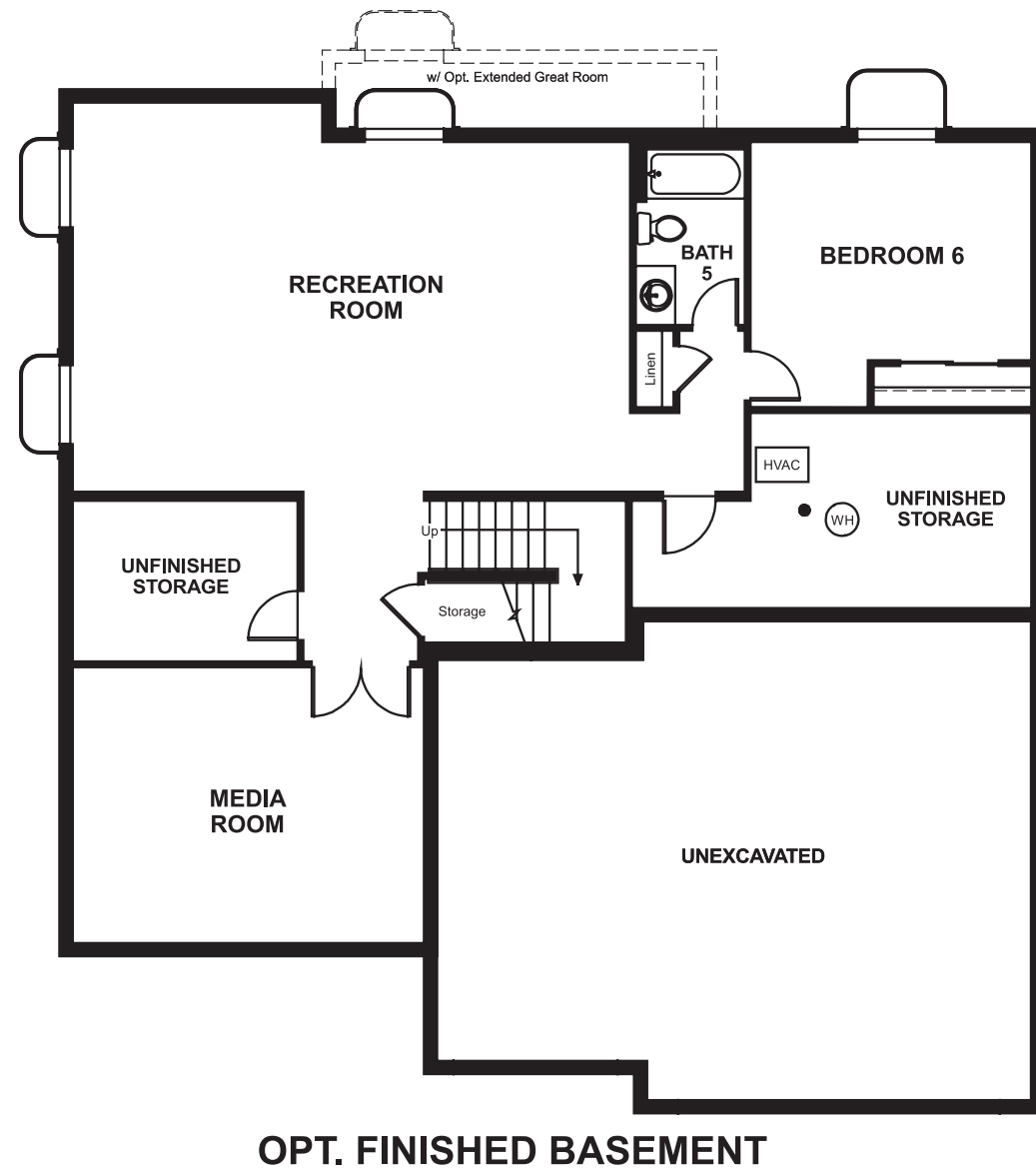


Cobblestone Ranch
DILLON

Approx. square feet: 3,050
Stories: 2
Bedrooms: 4 - 6

Garage: 3-car
Plan Number: D30D

Floor Plan
Basement



COMMUNITY LOCATION
7458 Grady Circle
Castle Rock, CO 80108
720-851-5828

HOME GALLERY
800 East Bellview Avenue, Suite C-12
Greenwood Village, CO 80111
303-850-5750



Cobblestone Ranch
DILLON

Approx. square feet: 3,050
Stories: 2
Bedrooms: 4 - 6
Garage: 3-car
Plan Number: D30D

With four bedrooms, a 3-car garage and an optional deluxe master bath, this inviting floor plan invites you to live large. A butler's pantry, sunny breakfast nook and private study are standard features and you can personalize the design by adding an optional covered patio, gourmet kitchen or fireplace.



Elevation B

Available elevations:



Elevation B



Elevation C



Elevation D

COMMUNITY LOCATION
7458 Grady Circle
Castle Rock, CO 80108
720-851-5828

HOME GALLERY
800 East Bellview Avenue, Suite C-12
Greenwood Village, CO 80111
303-850-5750

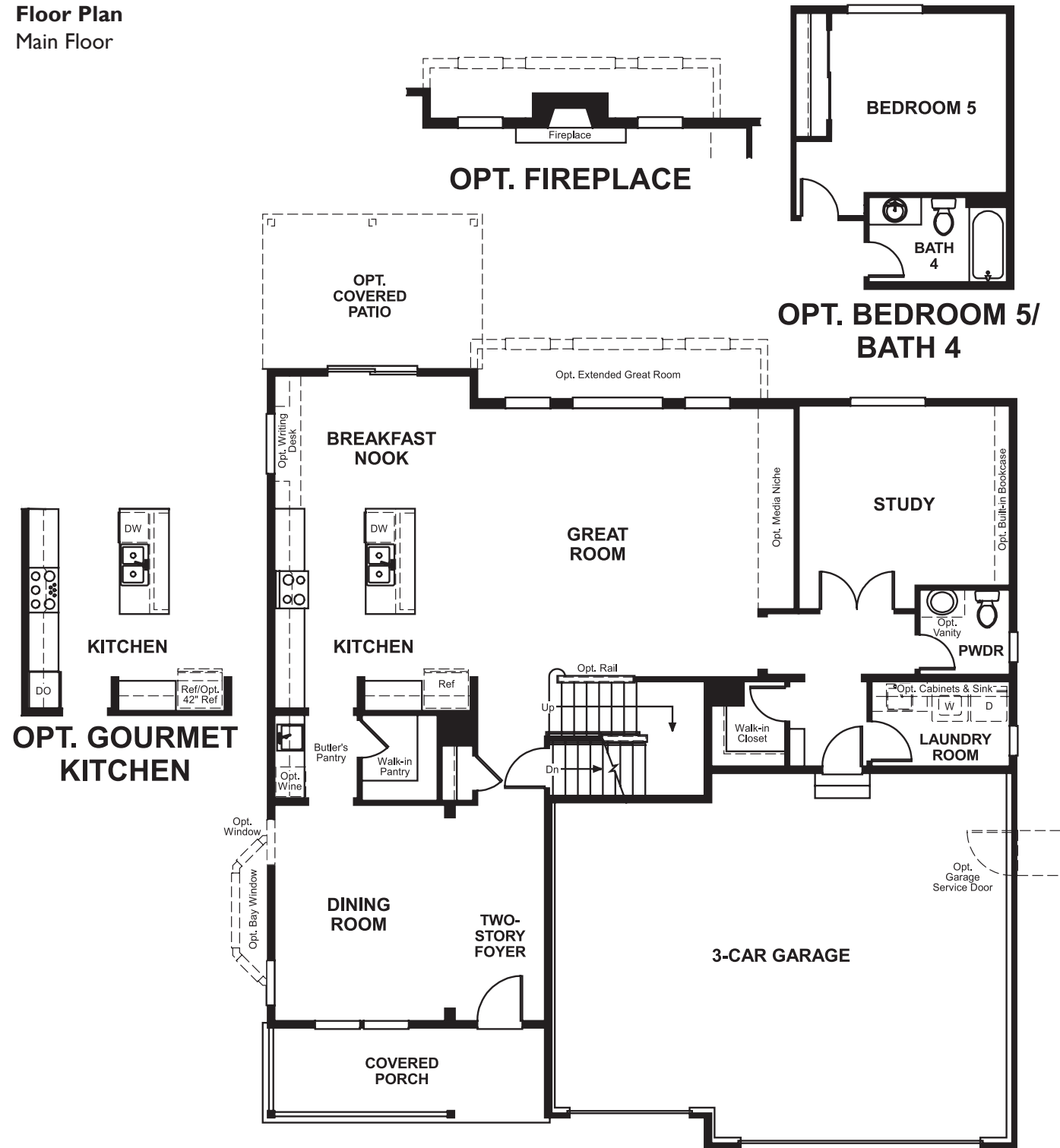


Cobblestone Ranch
DILLON

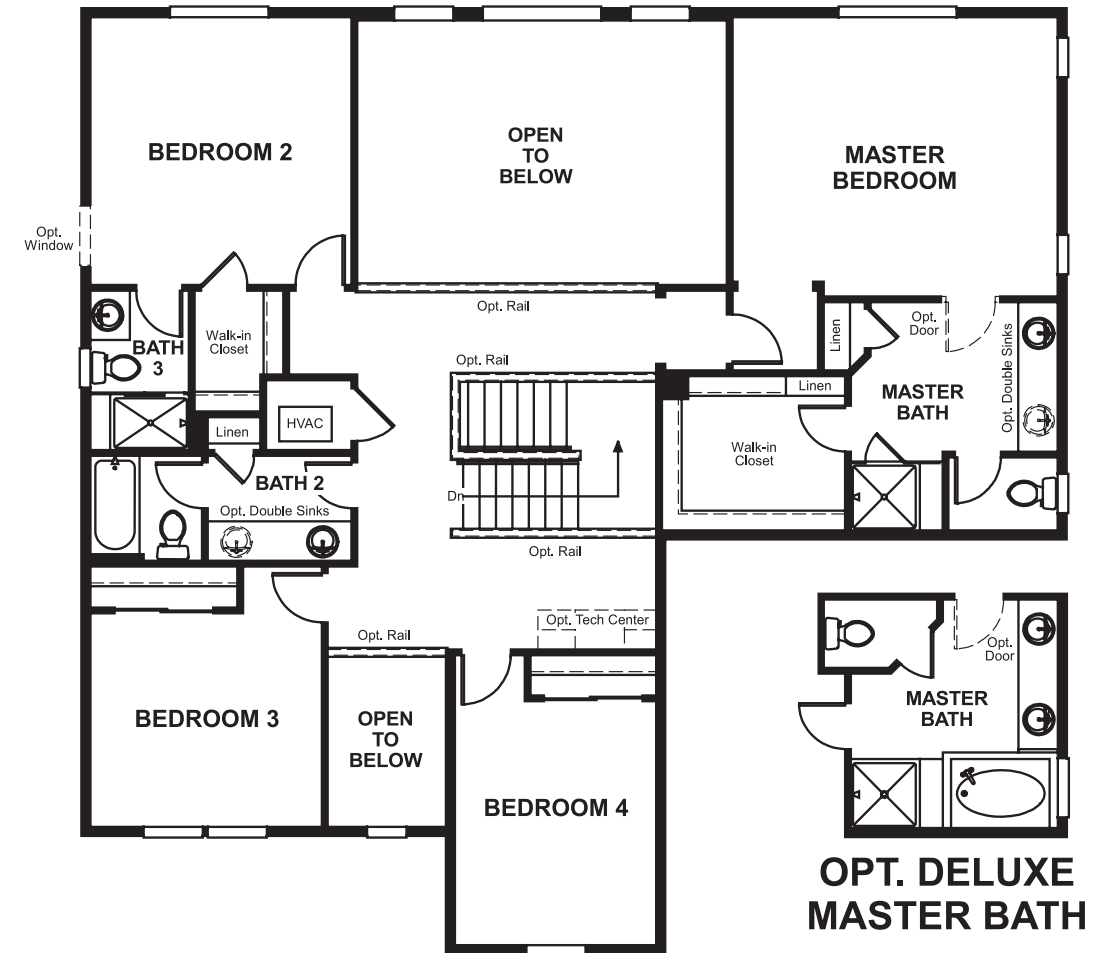
Approx. square feet: 3,050
Stories: 2
Bedrooms: 4 - 6

Garage: 3-car
Plan Number: D30D

Floor Plan
Main Floor



Floor Plan
Second Floor



THIS PLAN'S PROJECTED HERS® INDEX = 57*
Projected Rating Based on Plans – Field Confirmation Required

How does this floor plan rate?
Take a look: **100** = Standard new home* **130** = Typical resale home**
The lower the number, the better! Refer to the RESNET® HERS index brochure or go to www.RESNET.us for details.

What's a HERS® Index? HERS stands for Home Energy Rating System, a system created by RESNET® to measure home energy efficiency.[^]
A Projected HERS index or rating is a computer simulation performed prior to construction by a third-party HERS rater using RESNET-accredited rating software, rated feature and specification data derived from home plans, features and specifications, and other data selected or assumed by the rater. The projected HERS index is approximate and is subject to change without notice. Actual results will vary.

*This information is presented for education purposes only. The HERS index for a confirmed rating will be determined by a third-party HERS rater based on data gathered from on-site observations and, if required, testing of rated features for a home as featured, optioned, located, oriented and/or built.
+Standard new home is based on the RESNET® Reference Home definition with a HERS® index of 100 (based on the 2006 International Energy Conservation Code).
**Typical resale home is based on the U.S. Department of Energy definition with a HERS® index of 130.

[^]RESNET® has developed the HERS® index to indicate the comparative efficiencies of homes. It is no guarantee that energy efficiencies will be achieved.