

Blueberry Lane
FALLON

Approx. square feet: 2,750
Stories: 2
Bedrooms: 3 - 4

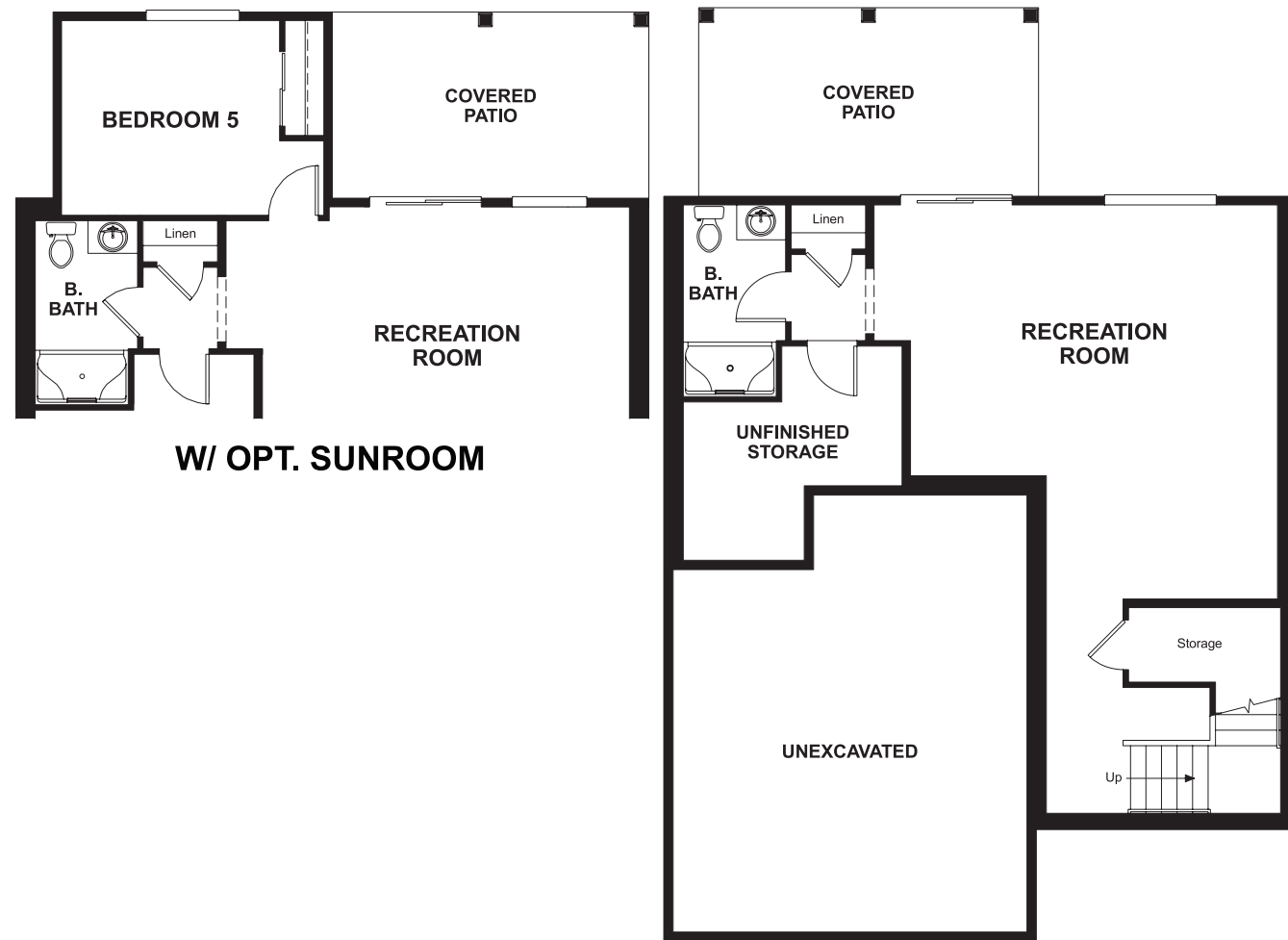
Garage: 2-car
Plan Number: W596

Blueberry Lane
FALLON

Approx. square feet: 2,750
Stories: 2
Bedrooms: 3 - 4
Garage: 2-car
Plan Number: W596

The Fallon plan is ideal for entertaining, with a great room with fireplace, an adjacent dining room and an inviting kitchen with a center island and optional gourmet or chef's features. You'll also appreciate a main-floor powder room. Upstairs, enjoy a versatile loft and three generous bedrooms, including a large master suite with a private bath. A finished basement with rec room is also included! Personalize this plan with a sunroom, covered patio with fireplace, deluxe master bath and more.

Floor Plan
Basement



Elevation B

Available elevations:



Elevation B



Elevation C



Elevation D

COMMUNITY LOCATION
19651 11th Place South
Des Moines, WA 98148
206-757-2818

HOME GALLERY
20829 72nd Avenue South, Suite 115
Kent, WA 98032
253-446-7277



COMMUNITY LOCATION
19651 11th Place South
Des Moines, WA 98148
206-757-2818

HOME GALLERY
20829 72nd Avenue South, Suite 115
Kent, WA 98032
253-446-7277

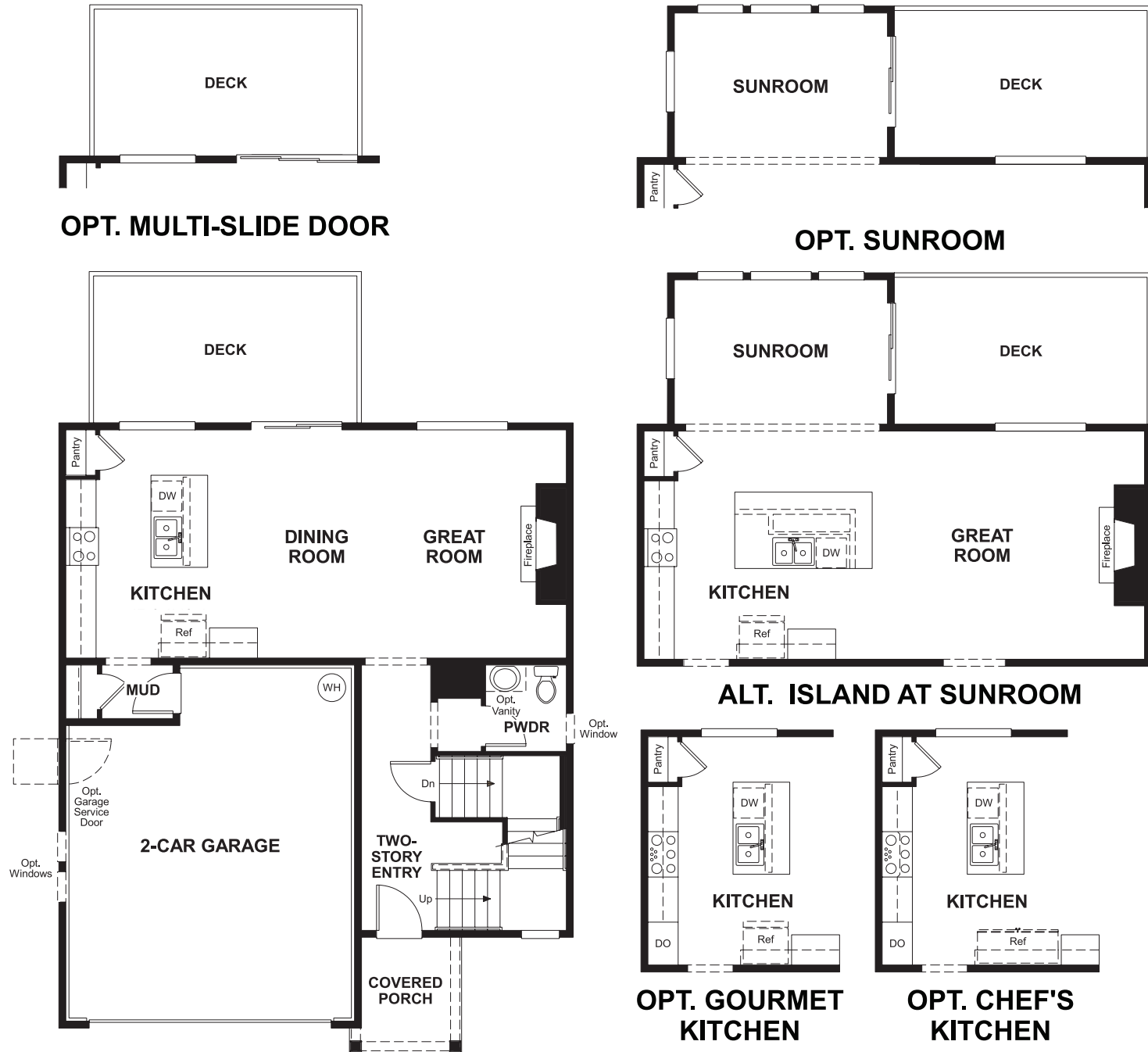


Blueberry Lane
FALLON

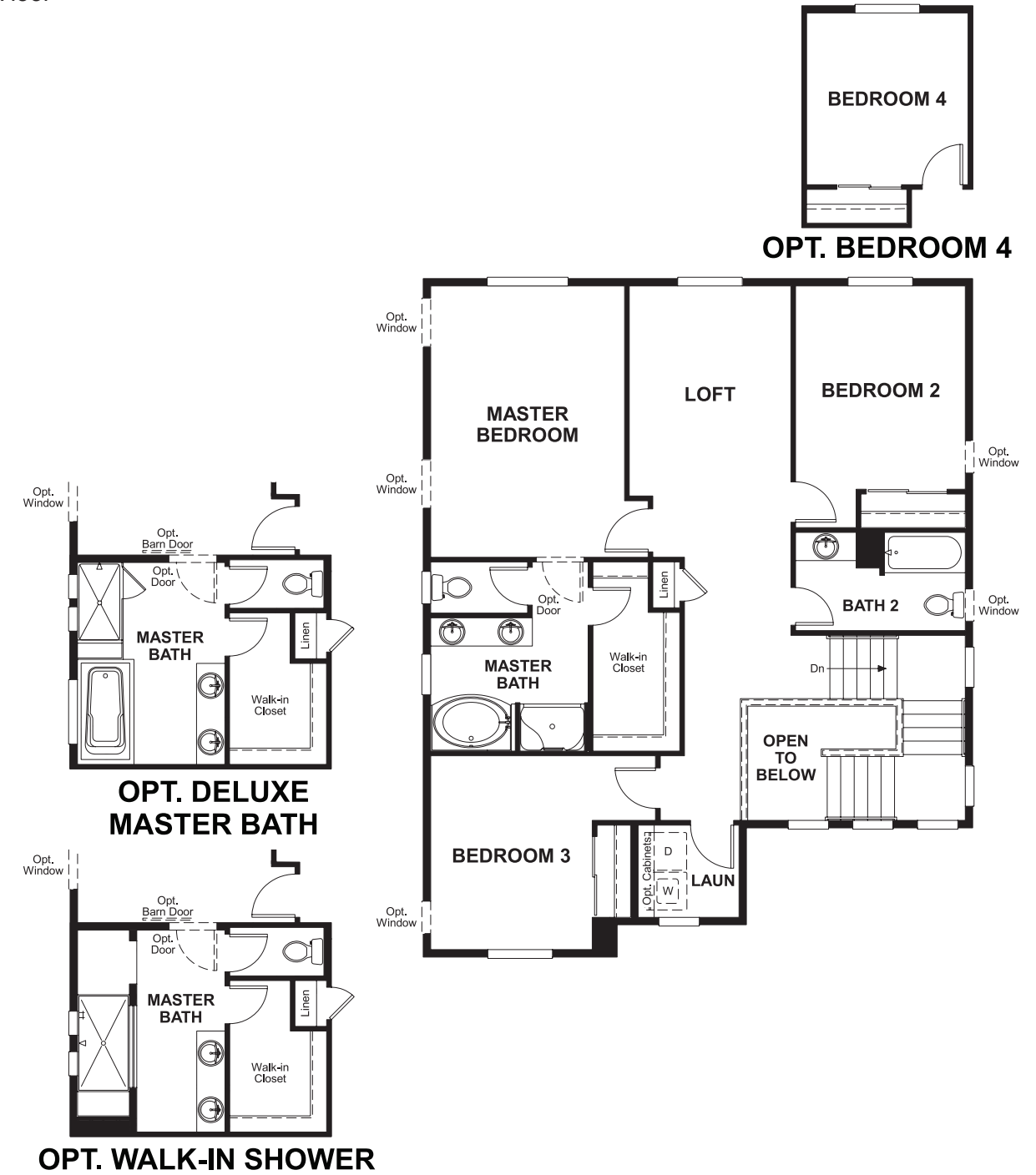
Approx. square feet: 2,750
Stories: 2
Bedrooms: 3 - 4

Garage: 2-car
Plan Number: W596

Floor Plan
Main Floor



Floor Plan
Second Floor



THIS PLAN'S PROJECTED HERS® INDEX = 57*
Projected Rating Based on Plans – Field Confirmation Required

How does this floor plan rate?
Take a look: **100** = Standard new home* **130** = Typical resale home**
The lower the number, the better! Refer to the RESNET® HERS index brochure or go to www.RESNET.us for details.

What's a HERS® Index? HERS stands for Home Energy Rating System, a system created by RESNET® to measure home energy efficiency.[^]
A Projected HERS index or rating is a computer simulation performed prior to construction by a third-party HERS rater using RESNET-accredited rating software, rated feature and specification data derived from home plans, features and specifications, and other data selected or assumed by the rater. The projected HERS index is approximate and is subject to change without notice. Actual results will vary.

*This information is presented for education purposes only. The HERS index for a confirmed rating will be determined by a third-party HERS rater based on data gathered from on-site observations and, if required, testing of rated features for a home as featured, optioned, located, oriented and/or built.
+Standard new home is based on the RESNET® Reference Home definition with a HERS® index of 100 (based on the 2006 International Energy Conservation Code).
**Typical resale home is based on the U.S. Department of Energy definition with a HERS® index of 130.

[^]RESNET® has developed the HERS® index to indicate the comparative efficiencies of homes. It is no guarantee that energy efficiencies will be achieved.