

Eagle Crest Ranch
FORD



Elevation A

Available elevations:



Elevation A



Elevation B



Elevation C shown with optional stone

Approx. square feet: 1,800

Stories: 1

Bedrooms: 3

Garage: 2-car

Plan Number: T18F

The ranch-style Ford plan has been cleverly designed to separate entertaining spaces from living quarters. On one side, you'll find a private study just off the entry, a formal dining room, a spacious kitchen and an open great room. On the other, a luxurious master suite and inviting bedrooms overlooks a nook and great room combination. You'll have all the entertaining space you need in this home, which includes a covered patio connected to the great room. A luxurious master suite completes this home.



COMMUNITY LOCATION

38976 S. Easy Gallup Drive
Tucson, AZ 85739
877-346-8102

HOME GALLERY

3091 West Ina Road
Tucson, AZ 85741
877-346-8102



COMMUNITY LOCATION

38976 S. Easy Gallup Drive
Tucson, AZ 85739
877-346-8102

HOME GALLERY

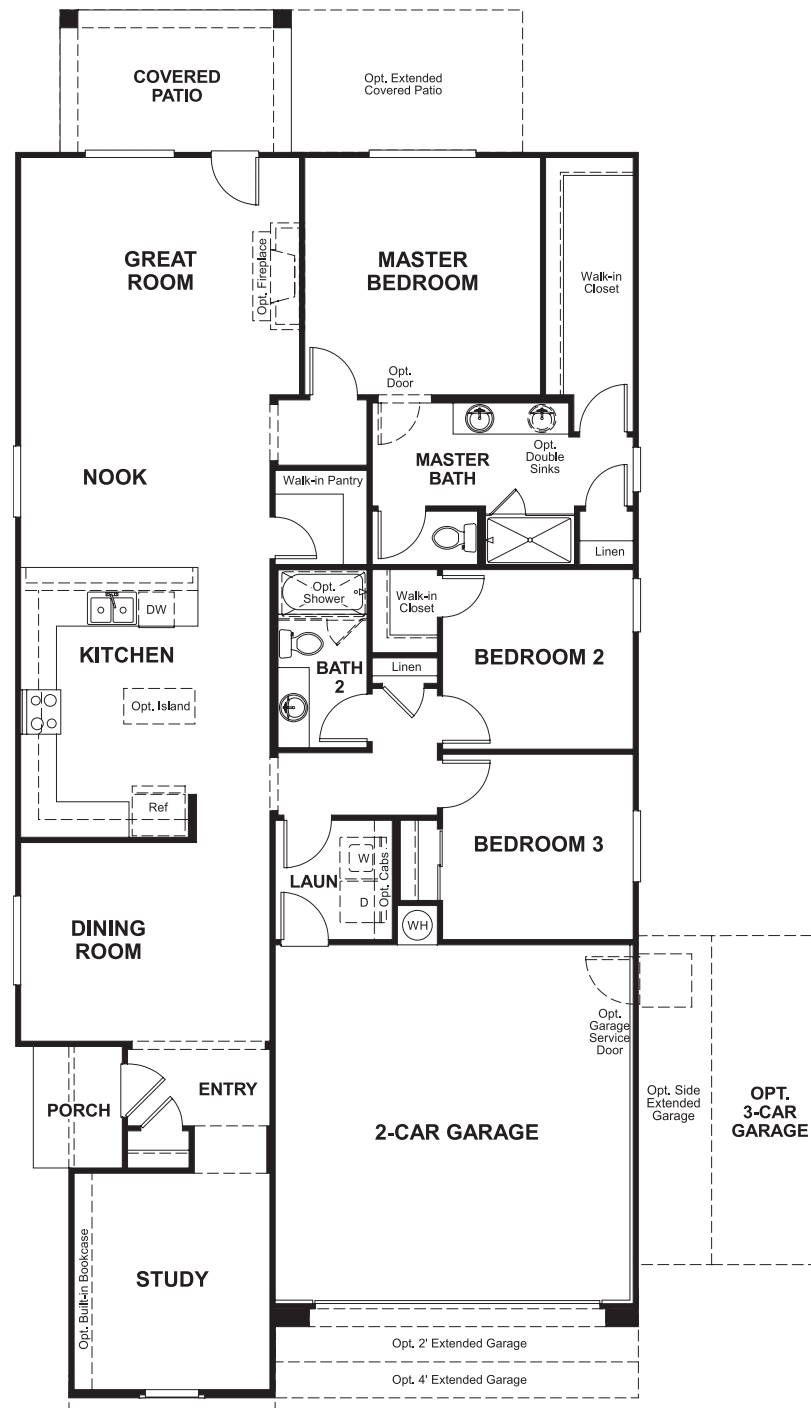
3091 West Ina Road
Tucson, AZ 85741
877-346-8102

Eagle Crest Ranch
FORD

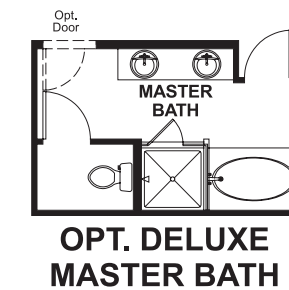
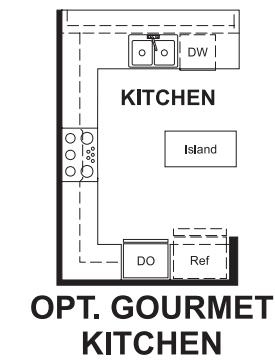
Approx. square feet: 1,800
Stories: 1
Bedrooms: 3

Garage: 2-car
Plan Number: T18F

Floor Plan
Main Floor



Floor Plan
Main Floor Options



**THIS PLAN'S PROJECTED
HERS® INDEX = 67 ***
Projected Rating Based on Plans – Field Confirmation Required

How does this floor plan rate?
Take a look: **100** = Standard new home* **130** = Typical resale home**
The lower the number, the better! Refer to the RESNET® HERS index brochure or go to www.RESNET.us for details.

What's a HERS® Index? HERS stands for Home Energy Rating System, a system created by RESNET® to measure home energy efficiency.[^]
A Projected HERS index or rating is a computer simulation performed prior to construction by a third-party HERS rater using RESNET-accredited rating software, rated feature and specification data derived from home plans, features and specifications, and other data selected or assumed by the rater. The projected HERS index is approximate and is subject to change without notice. Actual results will vary.

*This information is presented for education purposes only. The HERS index for a confirmed rating will be determined by a third-party HERS rater based on data gathered from on-site observations and, if required, testing of rated features for a home as featured, optioned, located, oriented and/or built.
+Standard new home is based on the RESNET® Reference Home definition with a HERS® index of 100 (based on the 2006 International Energy Conservation Code).
**Typical resale home is based on the U.S. Department of Energy definition with a HERS® index of 130.

[^]RESNET® has developed the HERS® index to indicate the comparative efficiencies of homes. It is no guarantee that energy efficiencies will be achieved.