

FRANCESCA



Elevation A

Approx. square feet: 3,450

Stories: 2

Bedrooms: 4 - 6

Garage: 3-car

Plan Number: F346

The Francesca welcomes guests with an extended entry and formal living and dining rooms. The two-story family room boasts a beautiful staircase leading to an open loft, inviting bedrooms and a playroom. The main-floor master suite has double doors, a private bath and a large walk-in closet.

Available elevations:



Elevation A



Elevation B



Elevation C - Shown w/ opt. stone



Elevation D



Elevation E



Elevation F



Elevation G



Elevation H

HOME GALLERY

2822 Commerce Park Drive, Suite 100
Orlando, FL 32819

HOME GALLERY

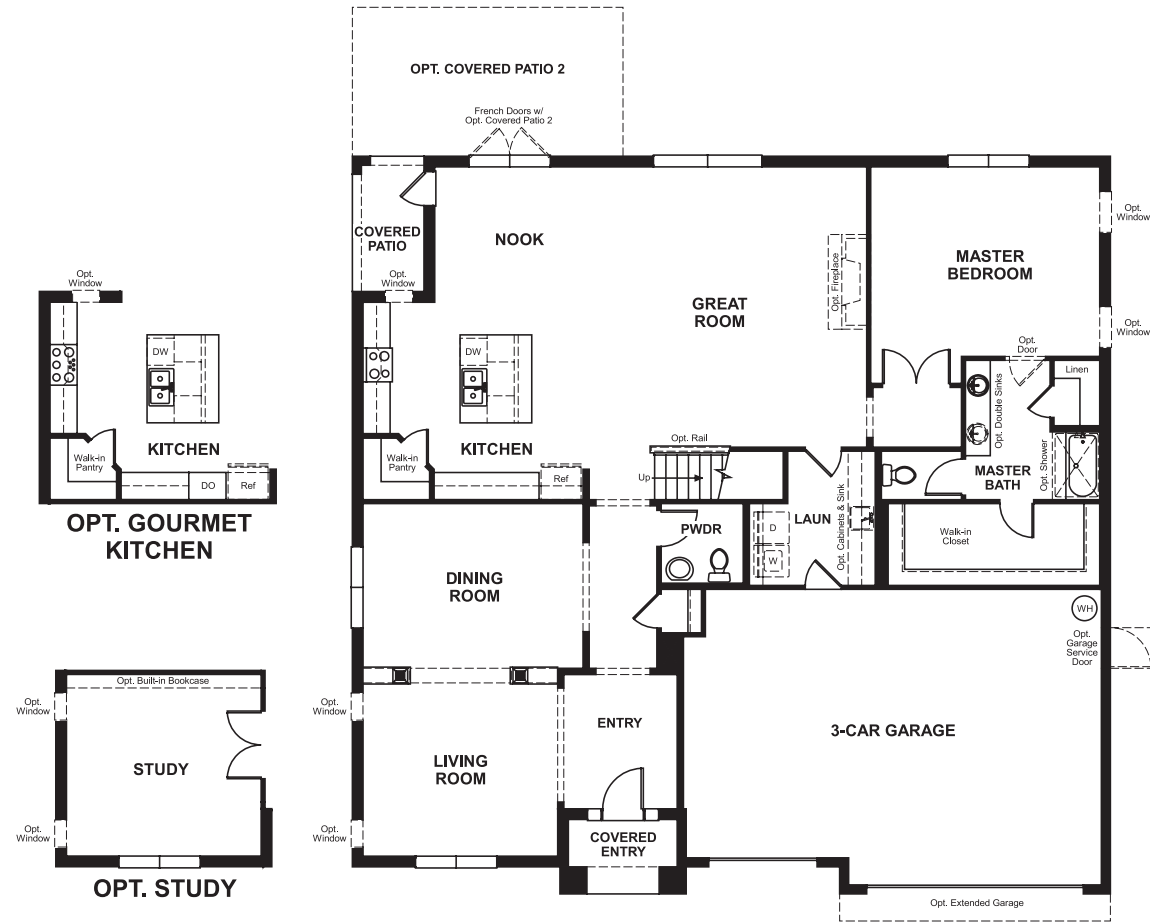
2822 Commerce Park Drive, Suite 100
Orlando, FL 32819

FRANCESCA

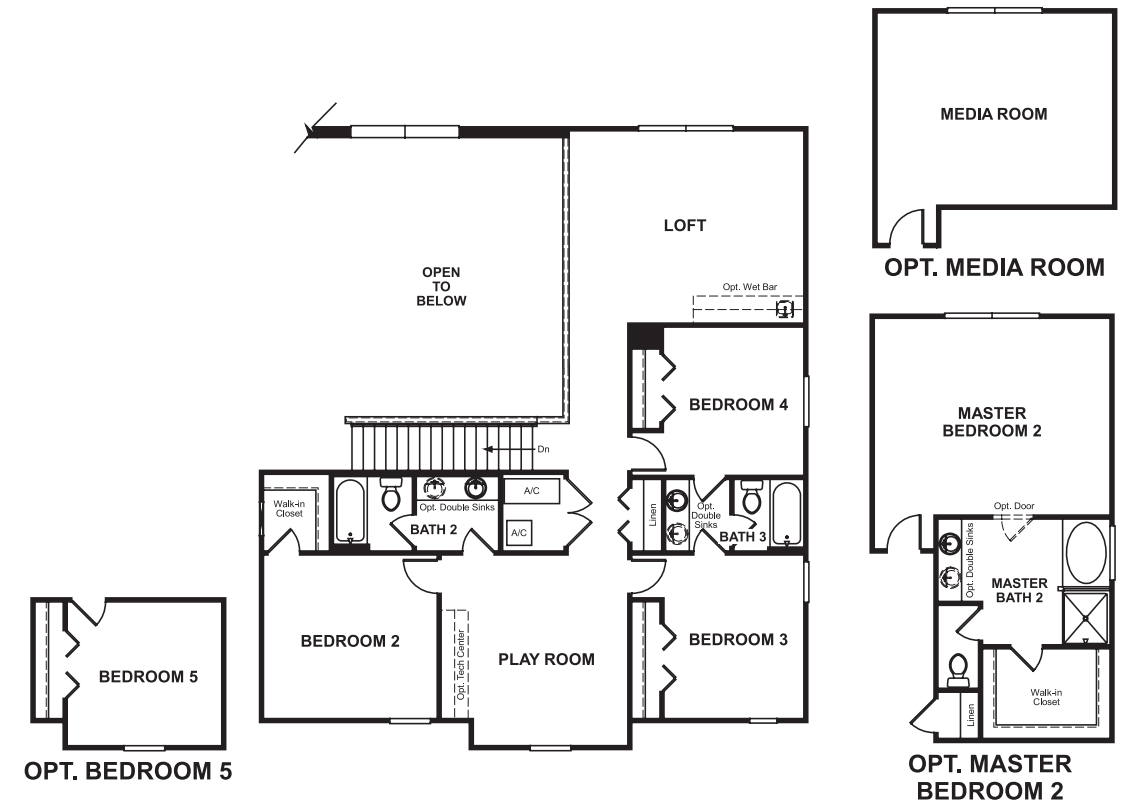
Approx. square feet: 3,450
Stories: 2
Bedrooms: 4 - 6

Garage: 3-car
Plan Number: F346

Floor Plan Main Floor



Floor Plan Second Floor



**THIS PLAN'S PROJECTED
HERS® INDEX = 64***
Projected Rating Based on Plans – Field Confirmation Required

How does this floor plan rate?
Take a look: **100** = Standard new home* **130** = Typical resale home**
The lower the number, the better! Refer to the RESNET® HERS index brochure or go to www.RESNET.us for details.

What's a HERS® Index? HERS stands for Home Energy Rating System, a system created by RESNET® to measure home energy efficiency.[^]
A Projected HERS index or rating is a computer simulation performed prior to construction by a third-party HERS rater using RESNET-accredited rating software, rated feature and specification data derived from home plans, features and specifications, and other data selected or assumed by the rater. The projected HERS index is approximate and is subject to change without notice. Actual results will vary.

Plans and renderings are conceptual drawings and may vary from actual plans and homes as built. Options and features may not be available on all homes and are subject to change without notice. Actual homes may vary from photos and renderings which show upgraded landscaping and may not represent the lowest-priced homes in the community. Features may include optional upgrades and may not be available on all homes. Square footage numbers are approximate and are subject to change without notice. Prices, specifications and availability subject to change without notice. ©2016 Richmond American Homes, Richmond American Homes of Florida, LP, CBC 1257429, 09/09/2016
*Typical new home is based on the U.S. Department of Energy definition with a HERS® index of 130.
**Typical resale home is based on the U.S. Department of Energy definition with a HERS® index of 130.

Floorplans and renderings are conceptual drawings and may vary from actual plans and homes as built. Options and features may not be available on all homes and are subject to change without notice. Actual homes may vary from photos and renderings which show upgraded landscaping and may not represent the lowest-priced homes in the community. Features may include optional upgrades and may not be available on all homes. Square footage numbers are approximate and are subject to change without notice. Prices, specifications and availability subject to change without notice. ©2016 Richmond American Homes, Richmond American Homes of Florida, LP, CBC 1257429, 09/09/2016