

Skyline Ridge  
**FREMONT**



**Elevation A**

**Approx. square feet:** 2,700

**Stories:** 2

**Bedrooms:** 4 - 5

**Garage:** 2-car

**Plan Number:** L269

The Fremont plan is a must-see for entertaining. The kitchen serves as an anchor between the great room and living room, offering an immense walk-in pantry and an island with double sinks. The upstairs boasts a versatile loft area and four inviting bedrooms, including the master suite. Options include a dining room with butler's pantry.

**Available elevations:**



**Elevation A**



**Elevation B**



**Elevation C**

**COMMUNITY LOCATION**

Grand Canyon Drive and Ford Avenue  
Las Vegas, NV 89178  
702-638-4440

**HOME GALLERY**

7770 South Dean Martin Drive, Suite 308  
Las Vegas, NV 89139  
702-617-8400



**COMMUNITY LOCATION**

Grand Canyon Drive and Ford Avenue  
Las Vegas, NV 89178  
702-638-4440

**HOME GALLERY**

7770 South Dean Martin Drive, Suite 308  
Las Vegas, NV 89139  
702-617-8400

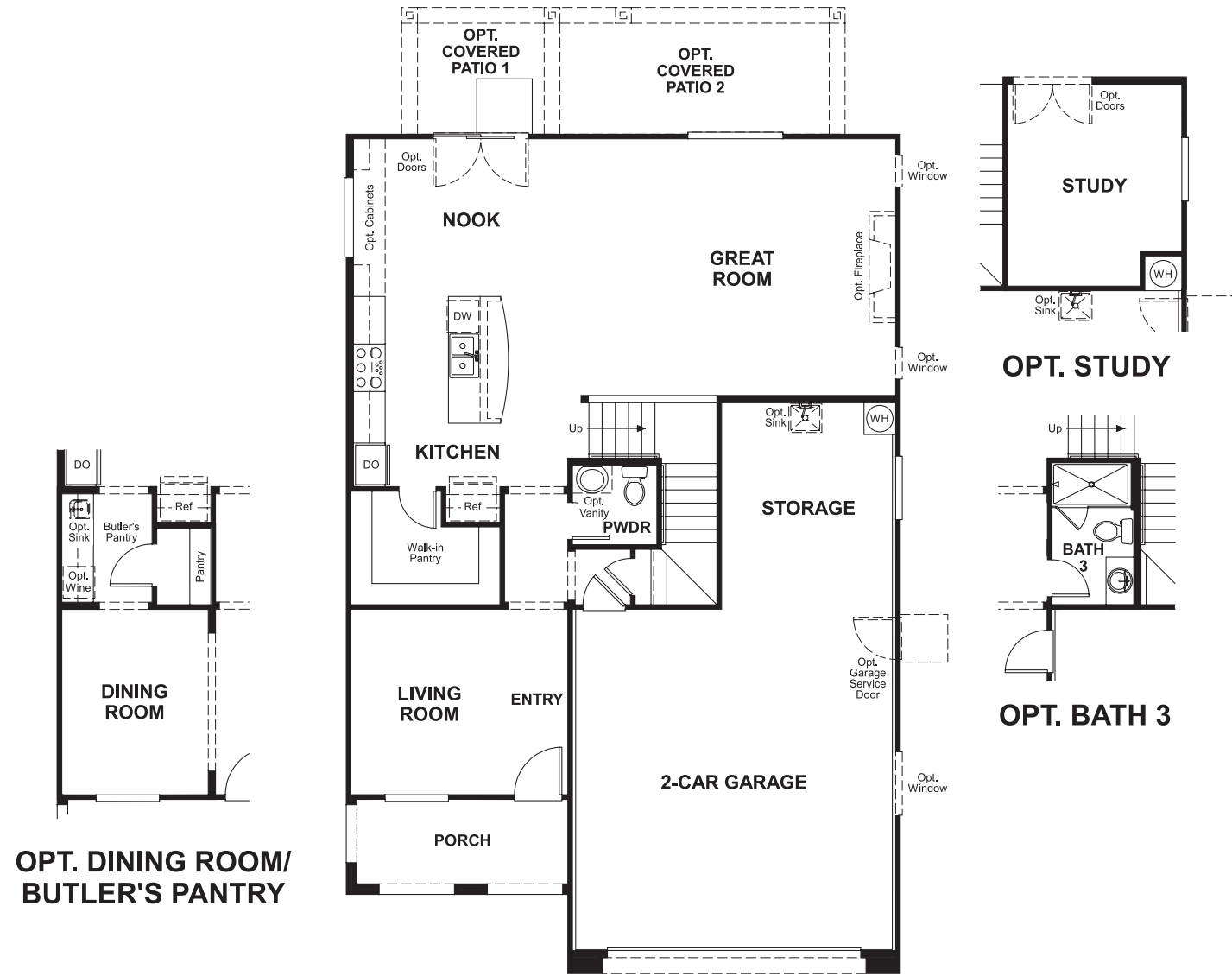


Skyline Ridge  
**FREMONT**

**Approx. square feet:** 2,700  
**Stories:** 2  
**Bedrooms:** 4 - 5

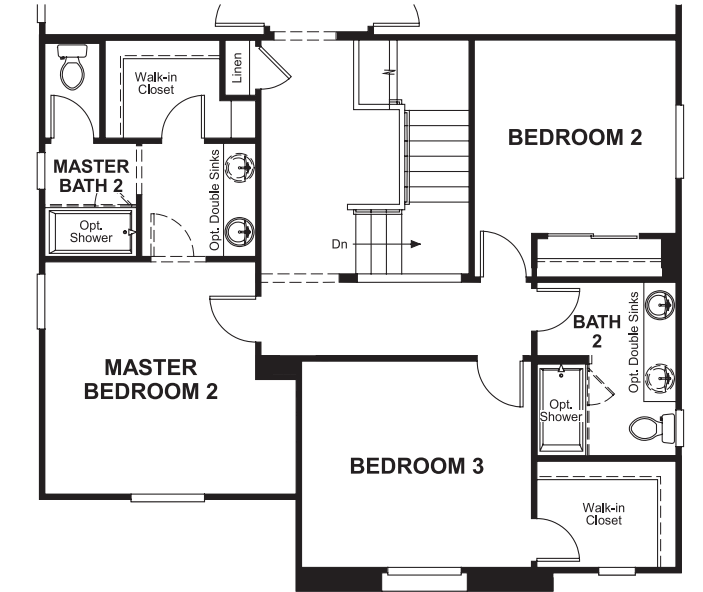
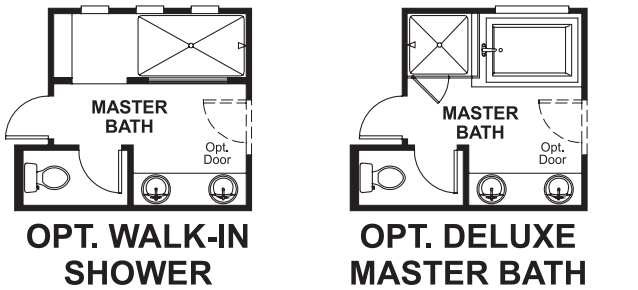
**Garage:** 2-car  
**Plan Number:** L269

**Floor Plan**  
Main Floor



**OPT. DINING ROOM/  
BUTLER'S PANTRY**

**Floor Plan**  
Second Floor



**OPT. BEDROOM 5**

**OPT. MASTER BEDROOM 2**