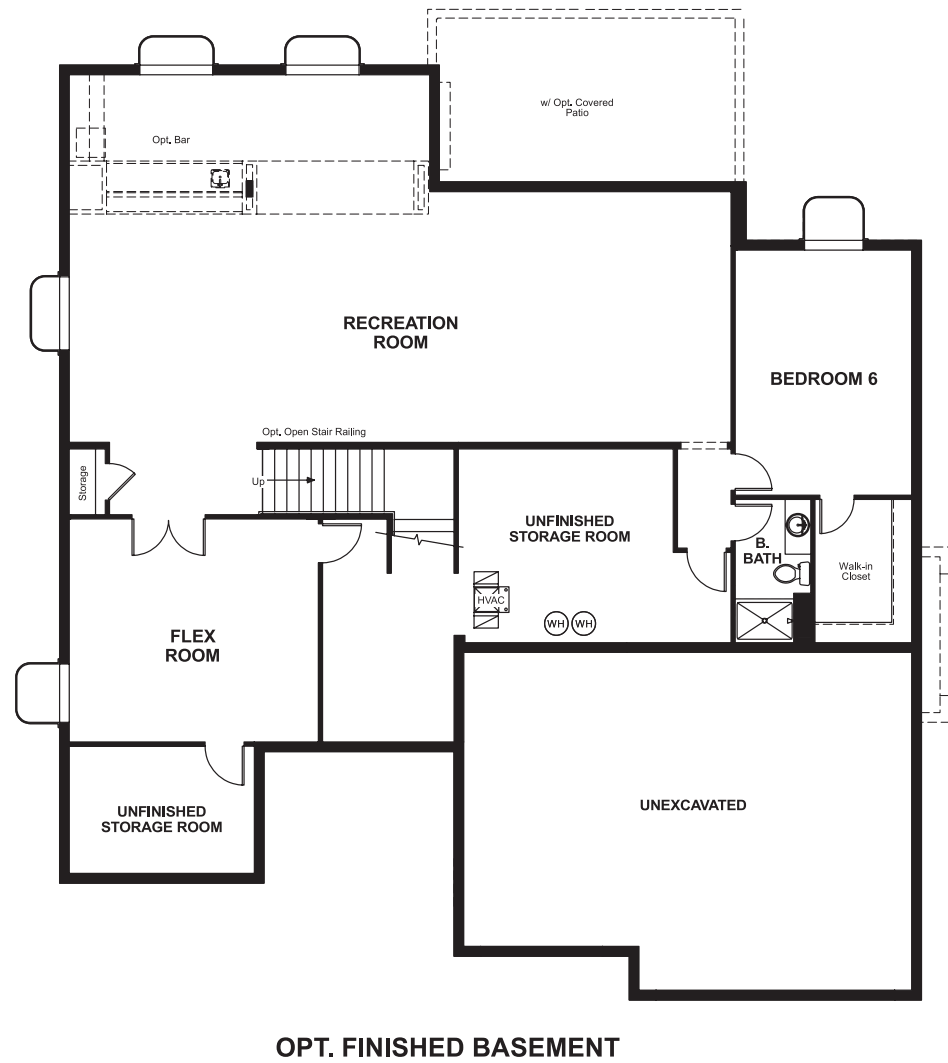


Candelas
HARMON

Approx. square feet: 4,400
Stories: 2
Bedrooms: 4 - 6

Garage: 3-car
Plan Number: D44H

Floor Plan
Basement



Candelas
HARMON

Approx. square feet: 4,400
Stories: 2
Bedrooms: 4 - 6
Garage: 3-car
Plan Number: D44H

The Harmon floor plan features a lofty foyer with a curved staircase leading into the living and dining room combination, providing a great entertaining space. This plan also includes a gourmet kitchen with a huge pantry, a study and a mudroom. Additional bedrooms and a deluxe master retreat with a coffee bar can be added.



Elevation A

Available elevations:



Elevation A



Elevation B



Elevation C

COMMUNITY LOCATION
9412 Noble Way
Arvada, CO 80007
303-680-5363

HOME GALLERY
8000 East Bellview Avenue, Suite C-12
Greenwood Village, CO 80111
888-402-4663



COMMUNITY LOCATION
9412 Noble Way
Arvada, CO 80007
303-680-5363

HOME GALLERY
8000 East Bellview Avenue, Suite C-12
Greenwood Village, CO 80111
888-402-4663



Candelas
HARMON

Approx. square feet: 4,400
Stories: 2
Bedrooms: 4 - 6

Garage: 3-car
Plan Number: D44H

Floor Plan
Main Floor



Floor Plan
Second Floor

