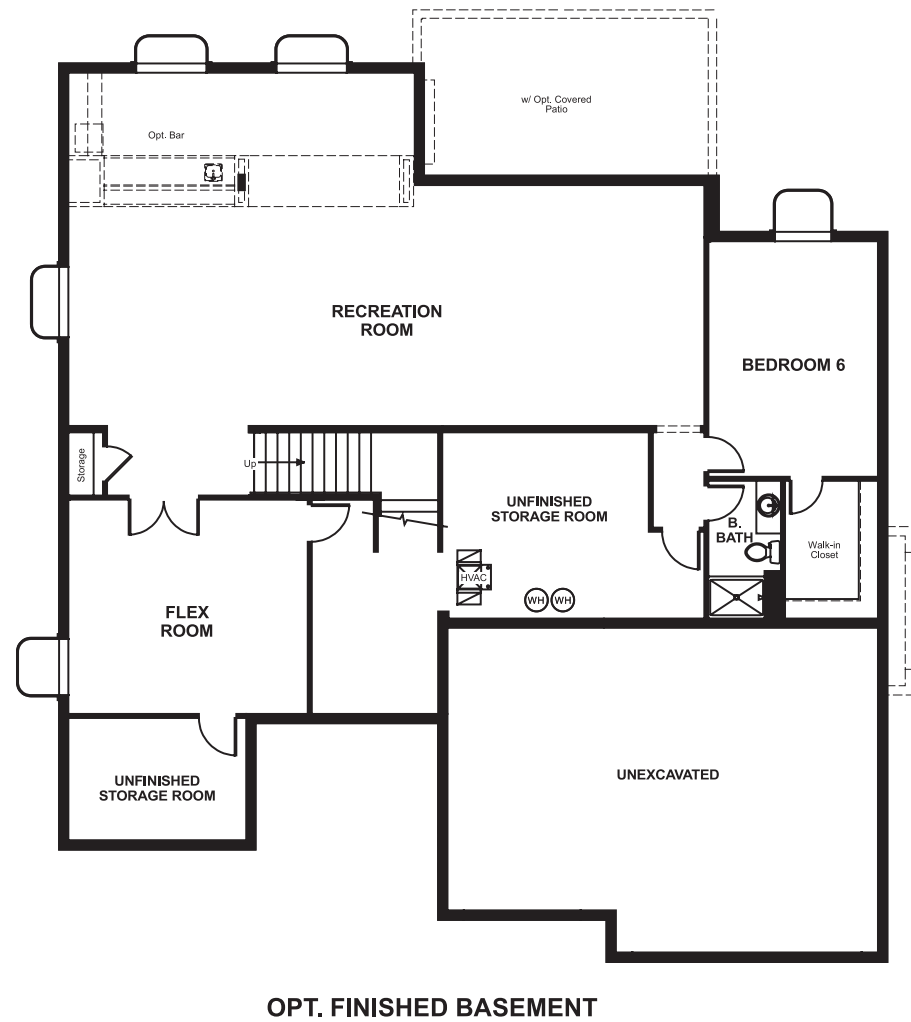


Blackstone Country Club
HARMON

Approx. square feet: 4,350
Stories: 2
Bedrooms: 4 - 5

Garage: 3-car
Plan Number: D44H

Floor Plan
Basement



Blackstone Country Club
HARMON

Approx. square feet: 4,350
Stories: 2
Bedrooms: 4 - 5
Garage: 3-car
Plan Number: D44H

The Harmon plan has a wealth of exciting features: formal living and dining rooms, a butler's pantry and a gourmet kitchen, a roomy walk-in pantry and a tech center, a family room, study, mudroom and nook—and that's just the main floor! Upstairs, there's a master suite with retreat, walk-in closet and deluxe bath.



Elevation A

Available elevations:



Elevation A



Elevation B



Elevation C

COMMUNITY LOCATION
East Smoky Hill Parkway & South Country Club Parkway
Aurora, CO 80016
303-850-5750

HOME GALLERY
8000 East Bellview Avenue, Suite B-90
Greenwood Village, CO 80111
888-402-4663



COMMUNITY LOCATION
East Smoky Hill Parkway & South Country Club Parkway
Aurora, CO 80016
303-850-5750

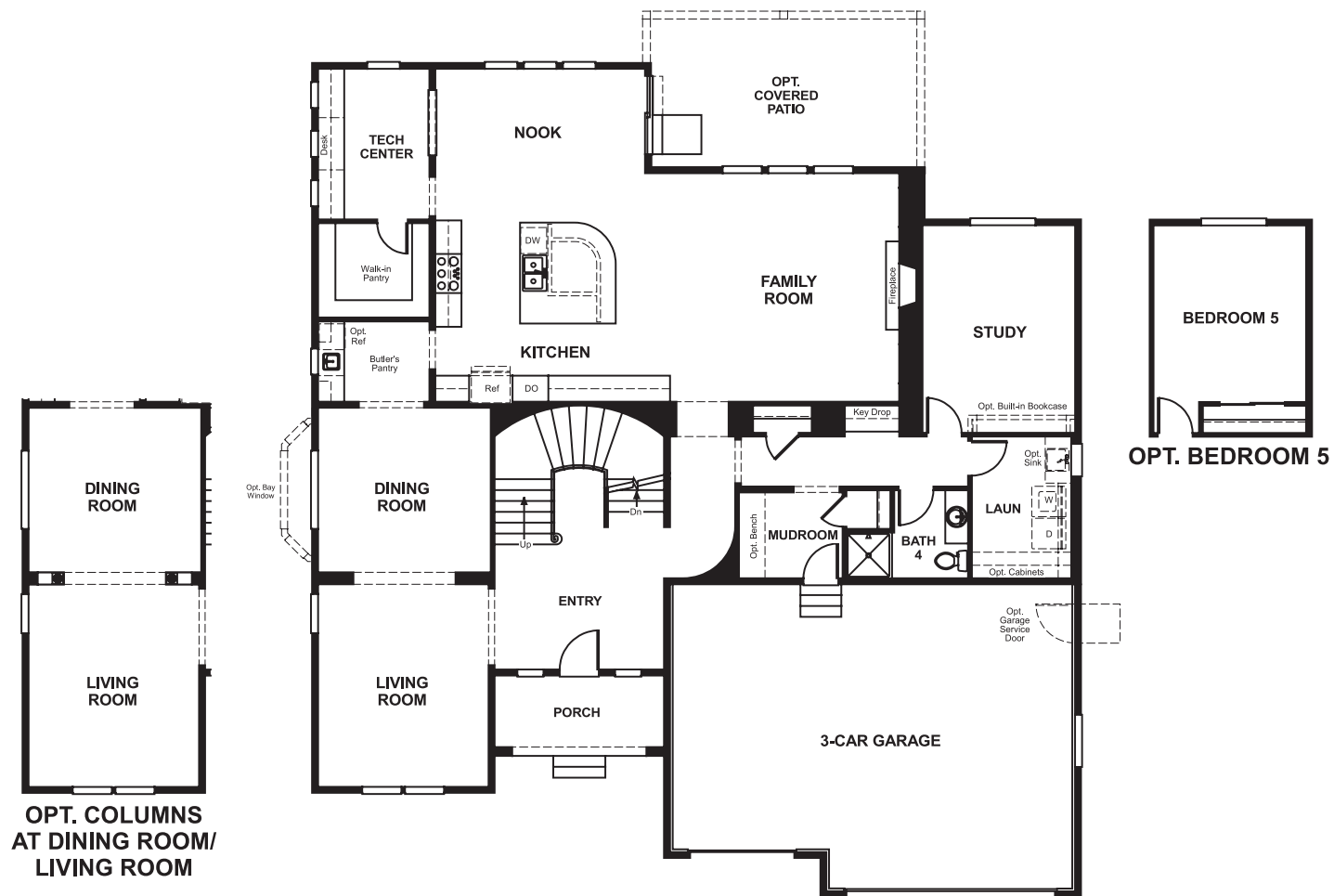
HOME GALLERY
8000 East Bellview Avenue, Suite B-90
Greenwood Village, CO 80111
888-402-4663

Blackstone Country Club
HARMON

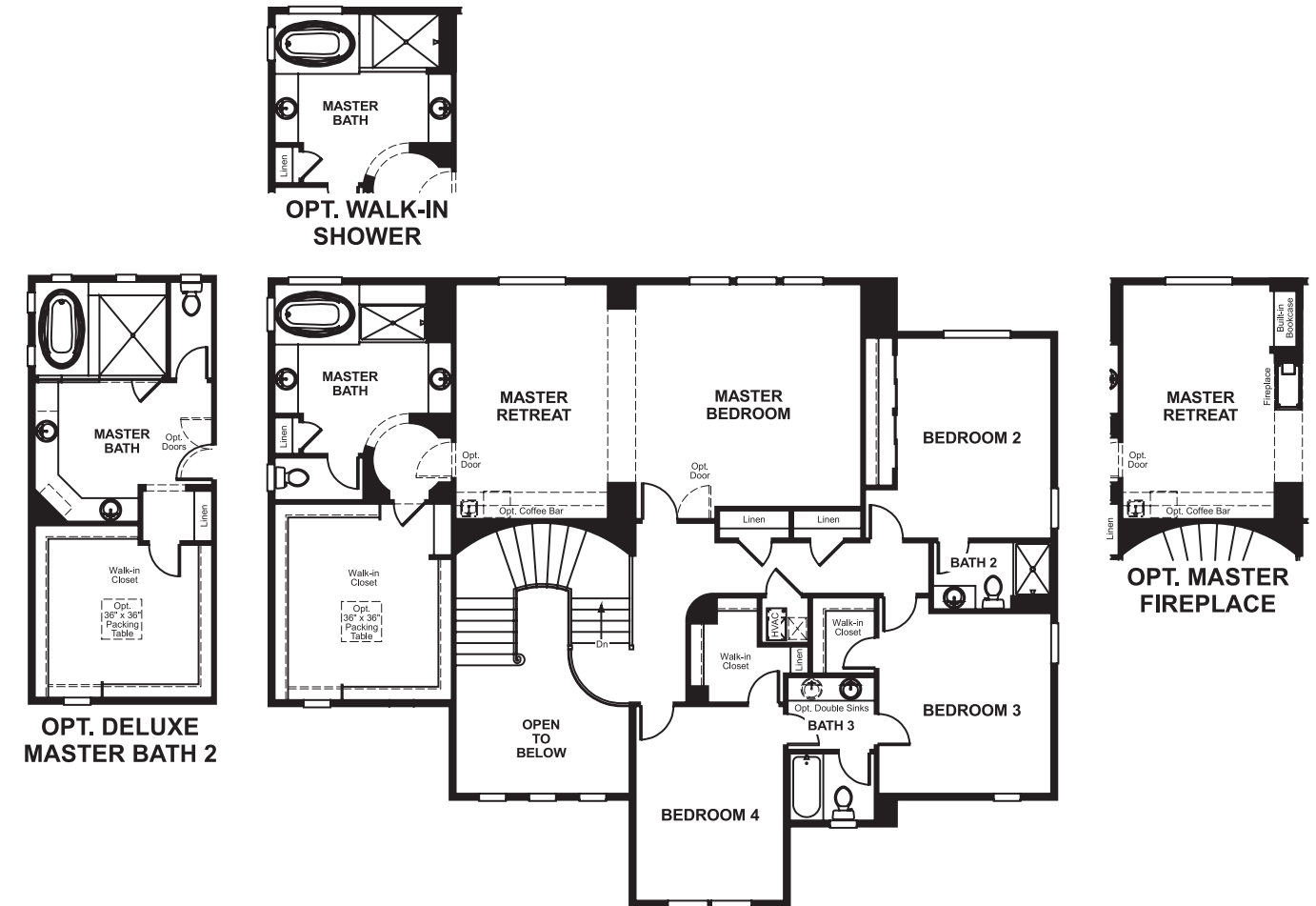
Approx. square feet: 4,350
Stories: 2
Bedrooms: 4 - 5

Garage: 3-car
Plan Number: D44H

Floor Plan
First Floor



Floor Plan
Second Floor



THIS PLAN'S PROJECTED HERS® INDEX = 59*
Projected Rating Based on Plans – Field Confirmation Required

How does this floor plan rate?
Take a look: **100** = Standard new home* **130** = Typical resale home**
The lower the number, the better! Refer to the RESNET® HERS index brochure or go to www.RESNET.us for details.

What's a HERS® Index? HERS stands for Home Energy Rating System, a system created by RESNET® to measure home energy efficiency.[^]
A Projected HERS index or rating is a computer simulation performed prior to construction by a third-party HERS rater using RESNET-accredited rating software, rated feature and specification data derived from home plans, features and specifications, and other data selected or assumed by the rater. The projected HERS index is approximate and is subject to change without notice. Actual results will vary.

*This information is presented for education purposes only. The HERS index for a confirmed rating will be determined by a third-party HERS rater based on data gathered from on-site observations and, if required, testing of rated features for a home as featured, optioned, located, oriented and/or built.
+Standard new home is based on the RESNET® Reference Home definition with a HERS® index of 100 (based on the 2006 International Energy Conservation Code).
++Typical resale home is based on the U.S. Department of Energy definition with a HERS® index of 130.

[^]RESNET® has developed the HERS® index to indicate the comparative efficiencies of homes. It is no guarantee that energy efficiencies will be achieved.