

Monte Bello at Summerlin  
**HEIDI**



**Elevation A**

**Approx. square feet:** 4,200  
**Stories:** 2  
**Bedrooms:** 4 - 5  
**Garage:** 3-car  
**Plan Number:** L42H

The Heidi plan's kitchen is a highlight of this home. A huge island with breakfast bar offers plenty of space to prepare meals or chat with guests as they enjoy refreshments. Add to that the ample walk-in pantry, nook and formal dining room, covered patio and two-story great room, and you have an ideal home for entertaining.

**Available elevations:**



**Elevation A**



**Elevation B**



**Elevation C**

**COMMUNITY LOCATION**

5701 Corona Vista Street  
Las Vegas, NV 89135  
702-638-4440

**HOME GALLERY**

7770 South Dean Martin Drive, Suite 308  
Las Vegas, NV 89139  
702-617-8400



**COMMUNITY LOCATION**

5701 Corona Vista Street  
Las Vegas, NV 89135  
702-638-4440

**HOME GALLERY**

7770 South Dean Martin Drive, Suite 308  
Las Vegas, NV 89139  
702-617-8400

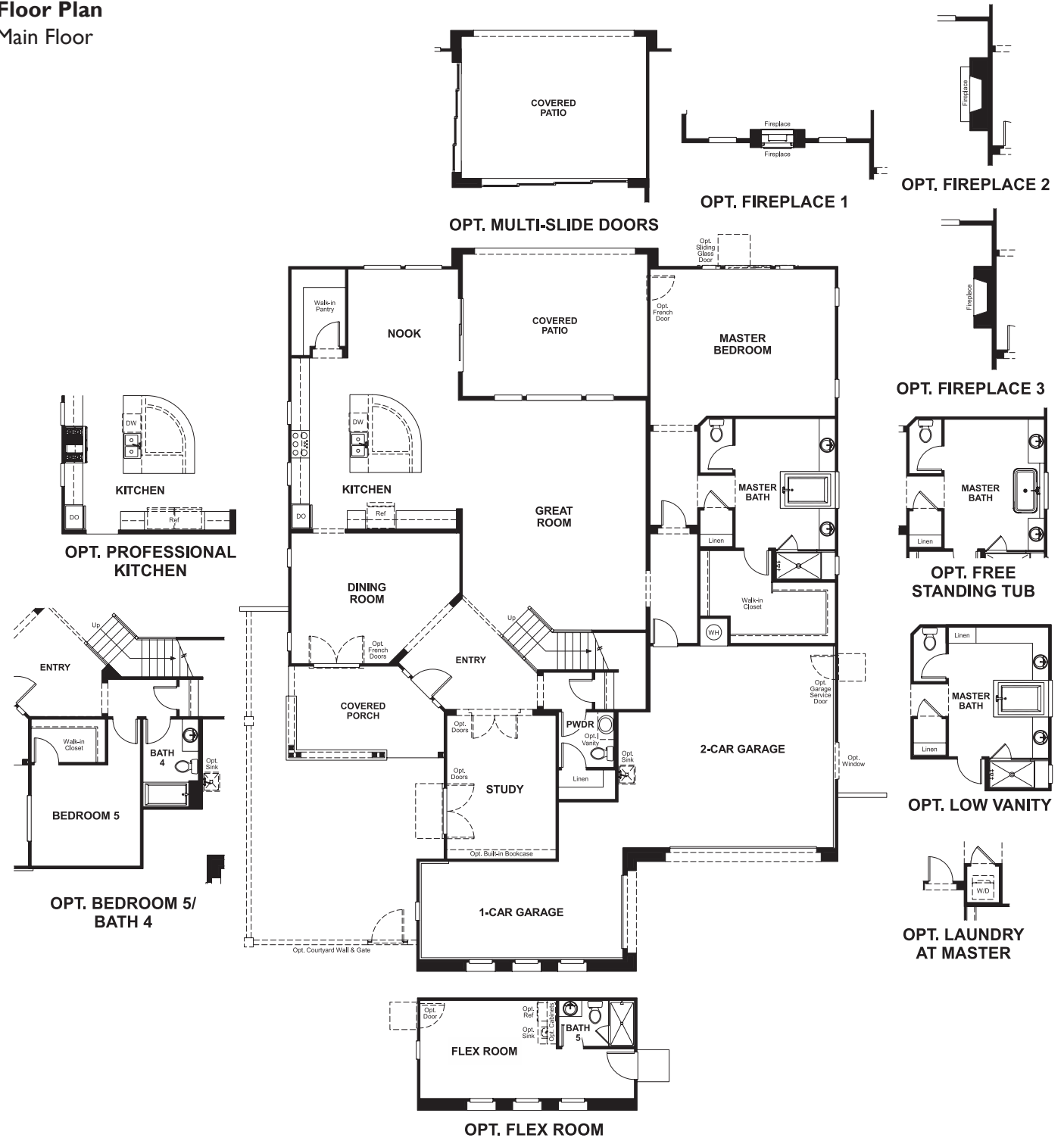


Monte Bello at Summerlin  
**HEIDI**

Approx. square feet: 4,200  
Stories: 2  
Bedrooms: 4 - 5

Garage: 3-car  
Plan Number: L42H

**Floor Plan**  
Main Floor



**Floor Plan**  
Second Floor



**THIS PLAN'S PROJECTED HERS® INDEX = 62\***  
Projected Rating Based on Plans – Field Confirmation Required

**How does this floor plan rate?**  
Take a look: 100 = Standard new home\* 130 = Typical resale home\*\*  
The lower the number, the better! Refer to the RESNET® HERS index brochure or go to [www.RESNET.us](http://www.RESNET.us) for details.

**What's a HERS® Index?** HERS stands for Home Energy Rating System, a system created by RESNET® to measure home energy efficiency.<sup>^</sup>  
A Projected HERS index or rating is a computer simulation performed prior to construction by a third-party HERS rater using RESNET-accredited rating software, rated feature and specification data derived from home plans, features and specifications, and other data selected or assumed by the rater. The projected HERS index is approximate and is subject to change without notice. Actual results will vary.

\*This information is presented for education purposes only. The HERS index for a confirmed rating will be determined by a third-party HERS rater based on data gathered from on-site observations and, if required, testing of rated features for a home as featured, optioned, located, oriented and/or built.  
+Standard new home is based on the RESNET® Reference Home definition with a HERS® index of 100 (based on the 2006 International Energy Conservation Code).  
++Typical resale home is based on the U.S. Department of Energy definition with a HERS® index of 130.

<sup>^</sup>RESNET® has developed the HERS® index to indicate the comparative efficiencies of homes. It is no guarantee that energy efficiencies will be achieved.