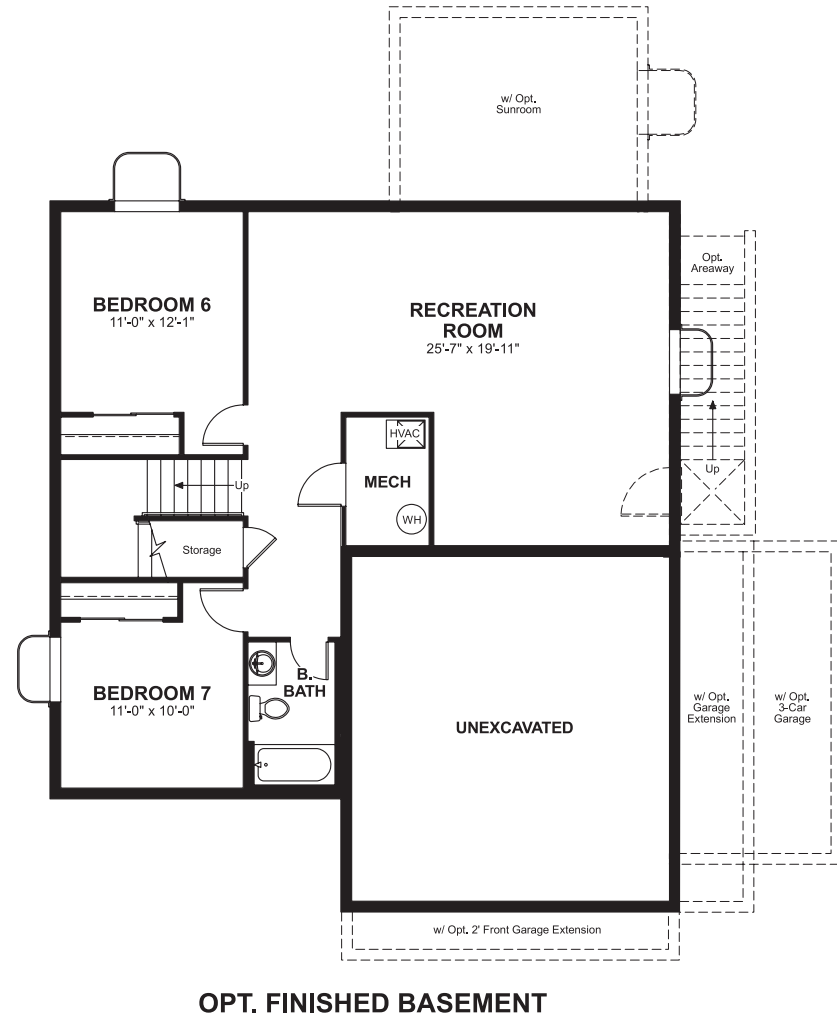


Fox Hollow
HEMINGWAY

Approx. square feet: 2,450
Stories: 2
Bedrooms: 4 - 7

Garage: 2- to 3-car
Plan Number: U250

Floor Plan
Basement



COMMUNITY LOCATION
3017 South Fox Point Drive
Saratoga Springs, UT 84045
801-768-9622

HOME GALLERY
849 West Levoy Drive, Suite 108
Salt Lake City, UT 84123
801-545-3435



Fox Hollow
HEMINGWAY

Approx. square feet: 2,450
Stories: 2
Bedrooms: 4 - 7
Garage: 2- to 3-car
Plan Number: U250

This plan features an entryway with adjacent flex space that can be personalized to suit your needs. At the back of the home, you'll find a great room with optional corner fireplace, a large kitchen with island and a mudroom with walk-in pantry. An upstairs laundry room, loft and optional sunroom off the kitchen complete this elegant home.



Elevation A

Available elevations:



Elevation A



Elevation B



Elevation C



Elevation D



Elevation E



Elevation F

COMMUNITY LOCATION
3017 South Fox Point Drive
Saratoga Springs, UT 84045
801-768-9622

HOME GALLERY
849 West Levoy Drive, Suite 108
Salt Lake City, UT 84123
801-545-3435

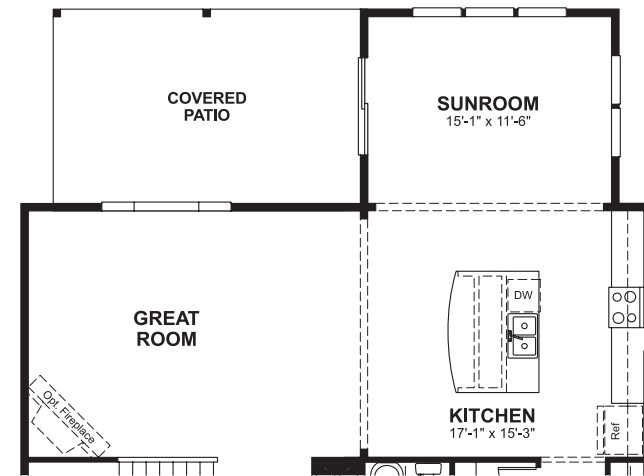


Fox Hollow
HEMINGWAY

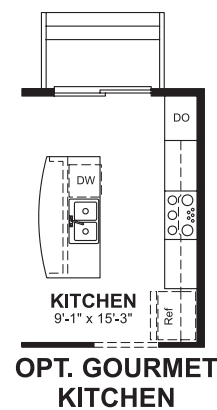
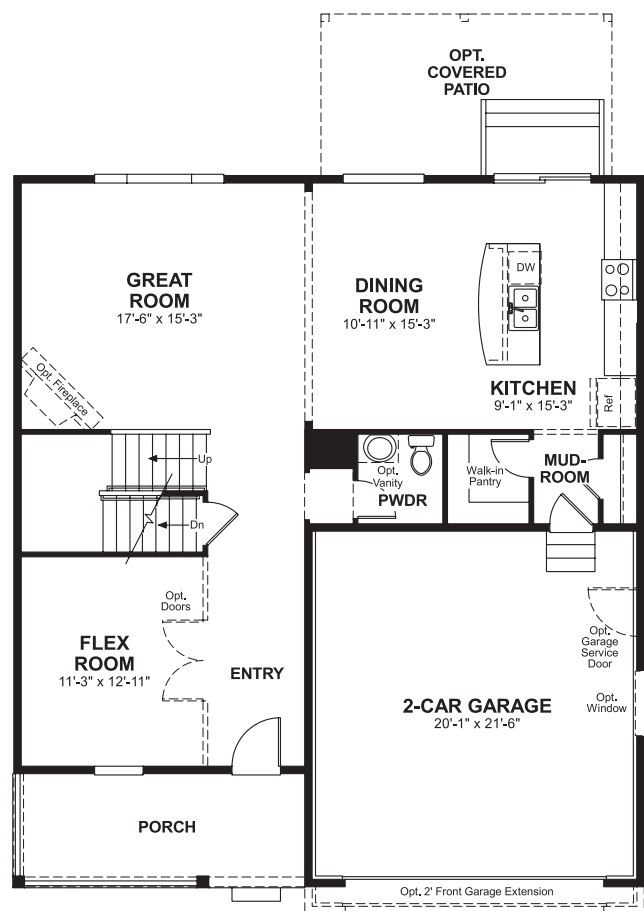
Approx. square feet: 2,450
Stories: 2
Bedrooms: 4 - 7

Garage: 2- to 3-car
Plan Number: U250

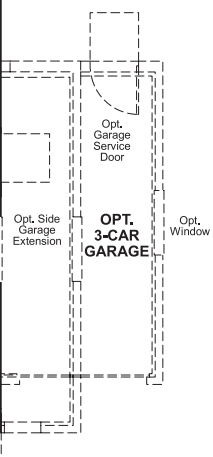
Floor Plan
First Floor



OPT. SUNROOM

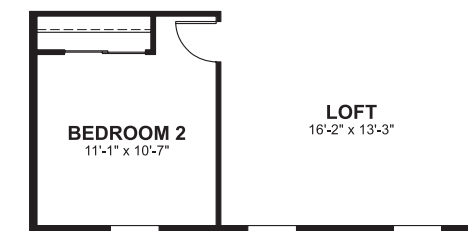
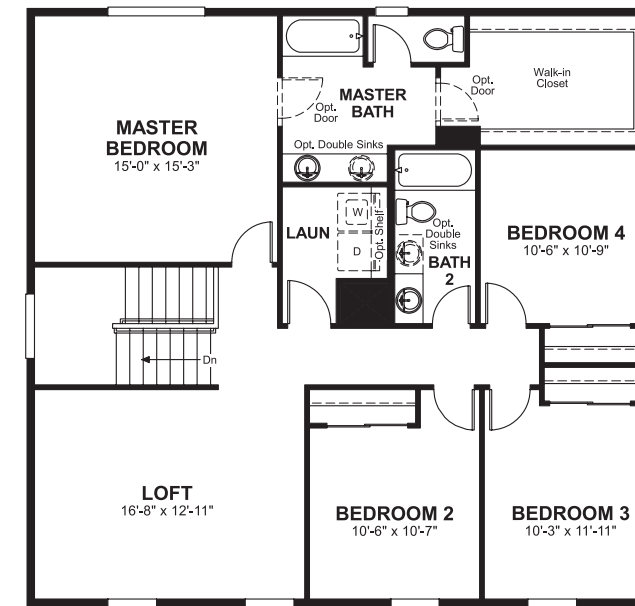


OPT. GOURMET KITCHEN

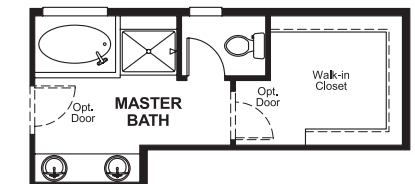


OPT. 3-CAR GARAGE

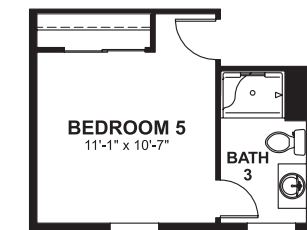
Floor Plan
Second Floor



OPT. LOFT 2



OPT. DELUXE MASTER BATH



**OPT. BEDROOM 5/
BATH 3**

**THIS PLAN'S PROJECTED
HERS® INDEX = 61 ***
Projected Rating Based on Plans – Field Confirmation Required

How does this floor plan rate?
Take a look: **100** = Standard new home* **130** = Typical resale home**
The lower the number, the better! Refer to the RESNET® HERS index brochure or go to www.RESNET.us for details.

What's a HERS® Index? HERS stands for Home Energy Rating System, a system created by RESNET® to measure home energy efficiency.[^]
A Projected HERS index or rating is a computer simulation performed prior to construction by a third-party HERS rater using RESNET-accredited rating software, rated feature and specification data derived from home plans, features and specifications, and other data selected or assumed by the rater. The projected HERS index is approximate and is subject to change without notice. Actual results will vary.

*This information is presented for education purposes only. The HERS index for a confirmed rating will be determined by a third-party HERS rater based on data gathered from on-site observations and, if required, testing of rated features for a home as featured, optioned, located, oriented and/or built.
+Standard new home is based on the RESNET® Reference Home definition with a HERS® index of 100 (based on the 2006 International Energy Conservation Code).
++Typical resale home is based on the U.S. Department of Energy definition with a HERS® index of 130.

[^]RESNET® has developed the HERS® index to indicate the comparative efficiencies of homes. It is no guarantee that energy efficiencies will be achieved.