

Anthem Park
HOPEWELL

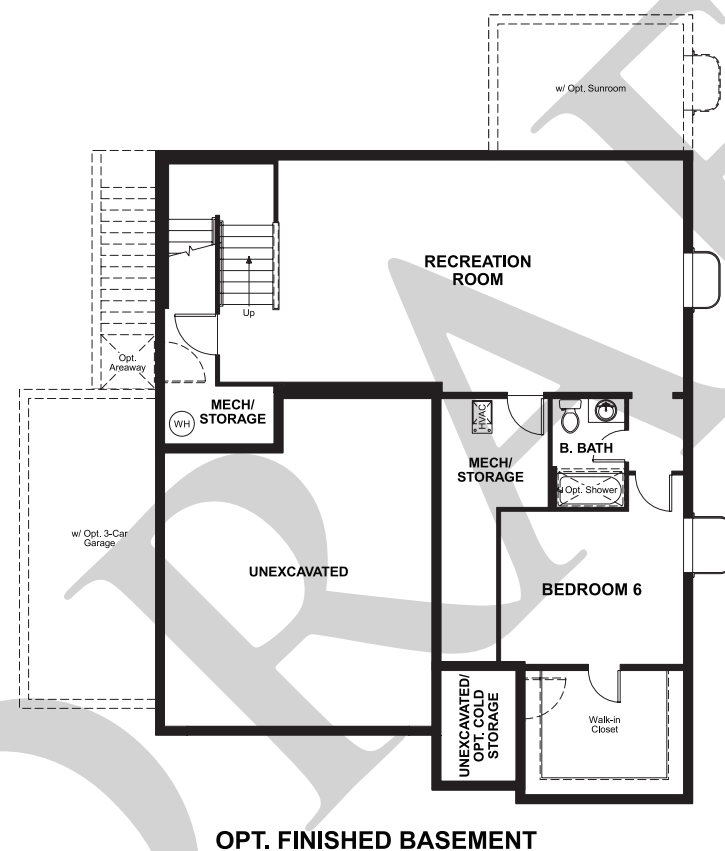
Approx. square feet: 2,650
Stories: 2
Bedrooms: 3 - 6
Garage: 2- to 3-car

Anthem Park
HOPEWELL

Approx. square feet: 2,650
Stories: 2
Bedrooms: 3 - 6
Garage: 2- to 3-car
Plan Number: U724

Love to entertain? The Hopewell's wide open great room and dining area are ideal for gathering with friends and family. The adjacent kitchen allows you to interact with guests without interrupting meal prep. Opt for a sunroom or covered patio for even more space to mingle. Upstairs, enjoy a loft, two guest rooms and a large master bedroom with a private bath and immense walk-in closet. Personalize with a tech center, bonus bedrooms, a deluxe master bath and more.

Floor plan
Basement



Elevation A

Available elevation:



Elevation A



Elevation B



Elevation C



Elevation D



Elevation E



Elevation F



Elevation G

COMMUNITY LOCATION
5637 West Yukon Park Lane
Herriman, UT 84096
801-545-3429

HOME GALLERY
849 West Levoy Drive, Suite 108
Salt Lake City, UT 84123
801-545-3435



COMMUNITY LOCATION
5637 West Yukon Park Lane
Herriman, UT 84096
801-545-3429

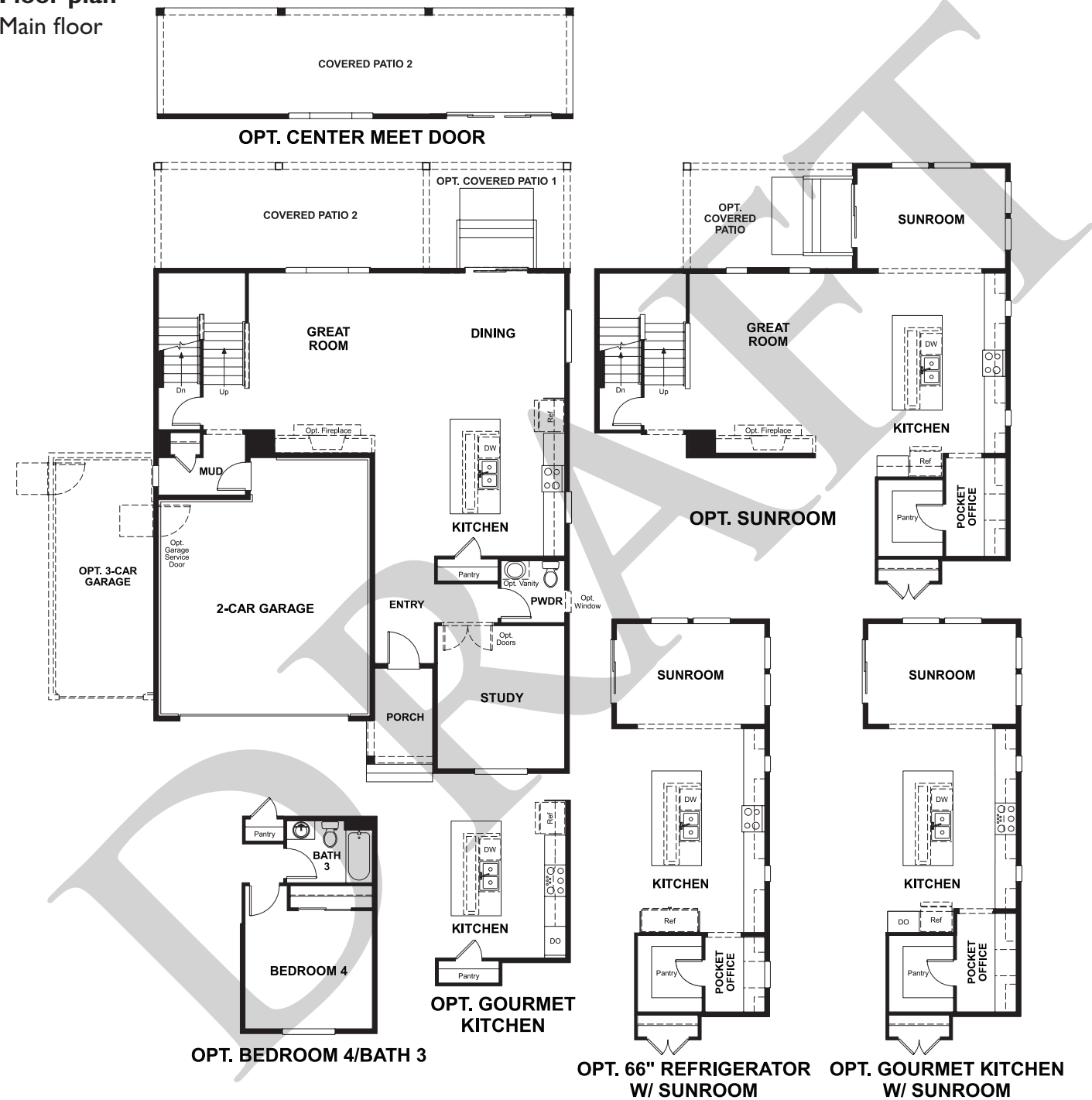
HOME GALLERY
849 West Levoy Drive, Suite 108
Salt Lake City, UT 84123
801-545-3435



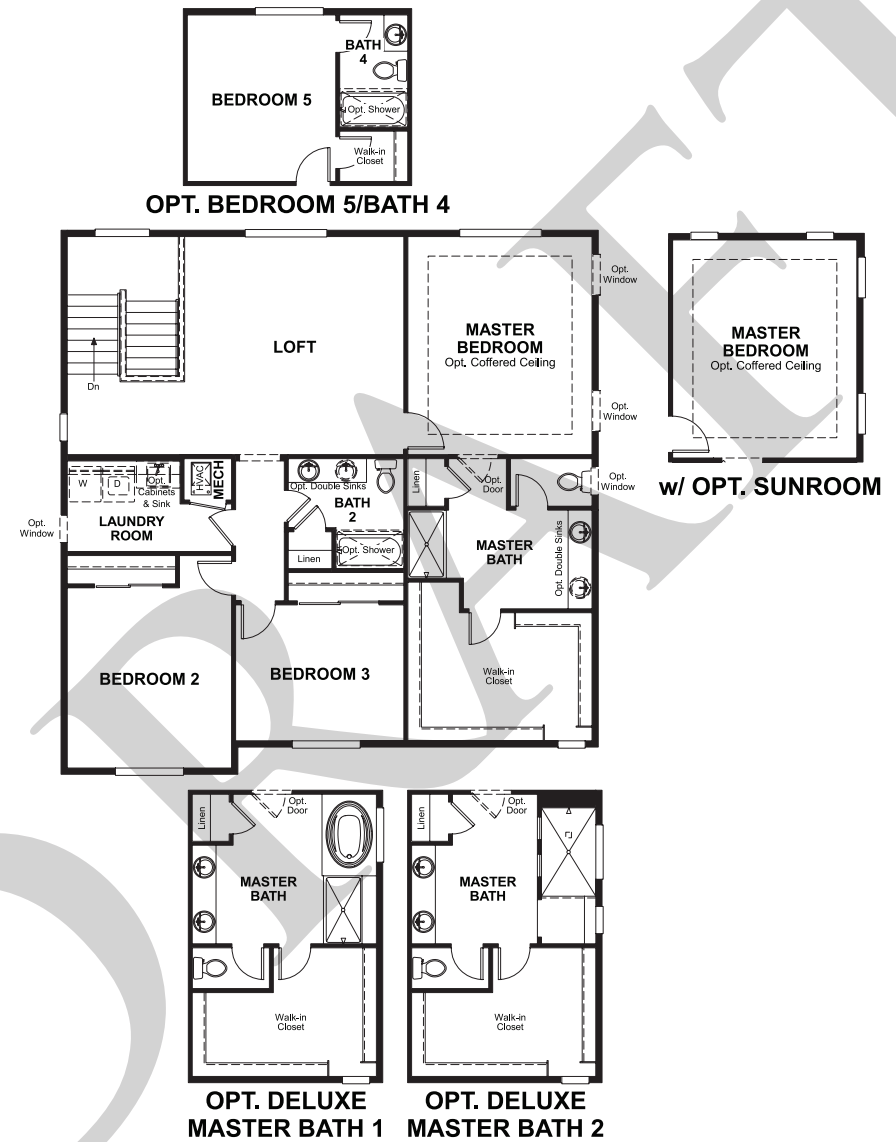
Anthem Park
HOPEWELL

Approx. square feet: 2,650 Bedrooms: 3 - 6
Stories: 2 Garage: 2- to 3-car

Floor plan
Main floor



Floor plan
Second floor



**THIS PLAN'S PROJECTED
HERS® INDEX = 58***
Projected Rating Based on Plans – Field Confirmation Required

How does this floor plan rate?
Take a look: 100 = Standard new home+ 130 = Typical resale home++
The lower the number, the better! Refer to the RESNET® HERS index brochure or go to www.RESNET.us for details.

What's a HERS® Index? HERS stands for Home Energy Rating System, a system created by RESNET® to measure home energy efficiency. A Projected HERS index or rating is a computer simulation performed prior to construction by a third-party HERS rater using RESNET-accredited rating software, rated feature and specification data derived from home plans, features and specifications, and other data selected or assumed by the rater. The projected HERS index is approximate and is subject to change without notice. Actual results will vary.

*This information is presented for education purposes only. The HERS index for a confirmed rating will be determined by a third-party HERS rater based on data gathered from on-site observations and, if required, testing of rated features for a home as featured, optioned, located, oriented and/or built.
+Standard new home is based on the RESNET® Reference Home definition with a HERS® index of 100 (based on the 2006 International Energy Conservation Code).
++Typical resale home is based on the U.S. Department of Energy definition with a HERS® index of 130.

^RESNET® has developed the HERS® index to indicate the comparative efficiencies of homes. It is no guarantee that energy efficiencies will be achieved.