

The Reserve at Parkland
JOLENE



Elevation A

Approx. square feet: 2,350
Stories: 1
Bedrooms: 3
Garage: 2-Car
Plan Number: N610

Highlights of the ranch-style Jolene plan include an expansive great room and a corner kitchen with a walk-in pantry, center island, breakfast nook and optional gourmet features. The luxurious master suite includes a deluxe bath and an oversized walk-in closet, and is separated from two additional bedrooms for privacy. An optional covered patio is available.

Available elevations:



Elevation A



Elevation B



Elevation C

COMMUNITY LOCATION

102 Heavenly Way
Oakley, CA 94561
800-852-9714

HOME GALLERY

One Harbor Center, Suite 150
Suisun City, CA 94585
By Appointment Only



COMMUNITY LOCATION

102 Heavenly Way
Oakley, CA 94561
800-852-9714

HOME GALLERY

One Harbor Center, Suite 150
Suisun City, CA 94585
By Appointment Only

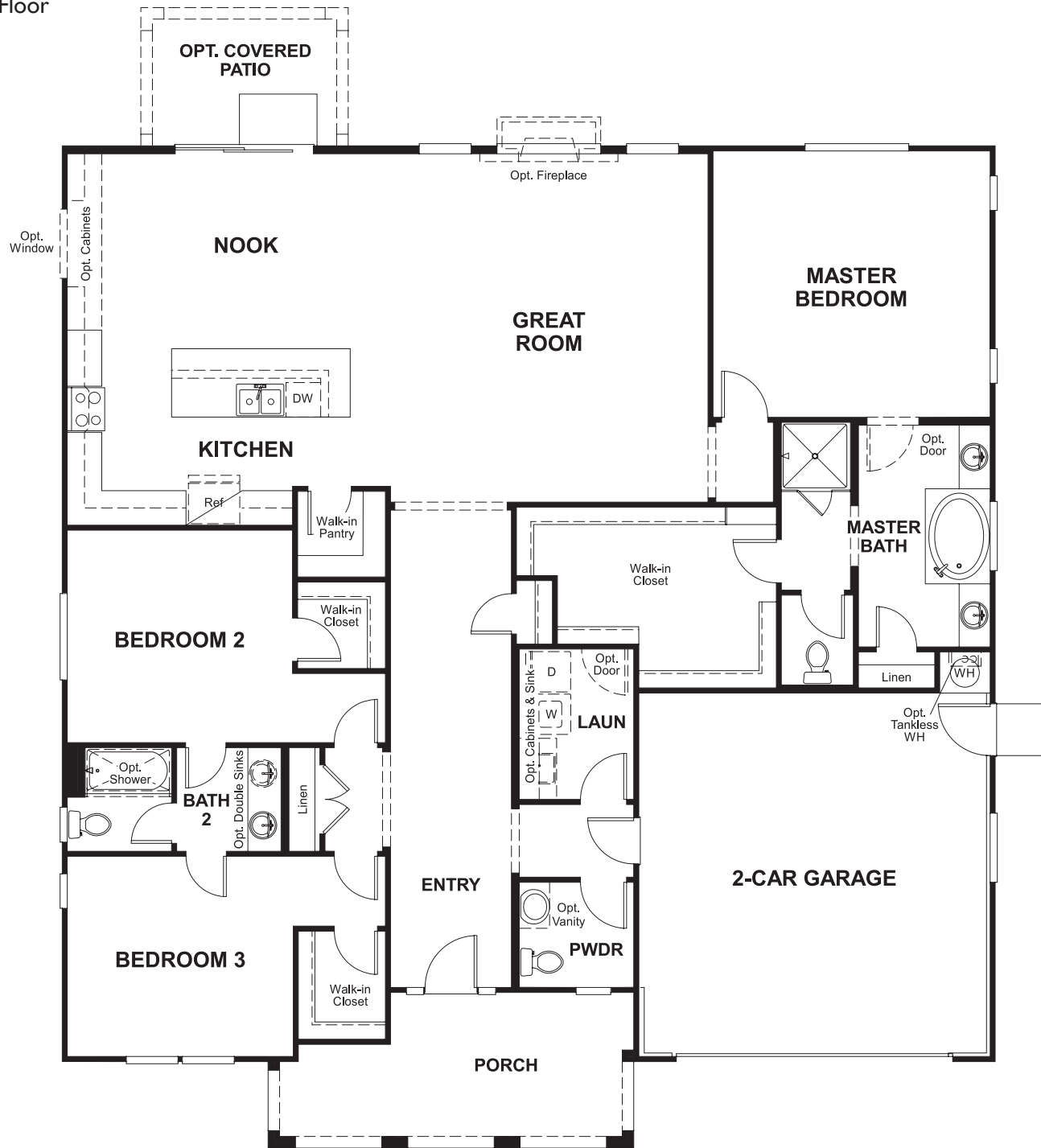


The Reserve at Parkland
JOLENE

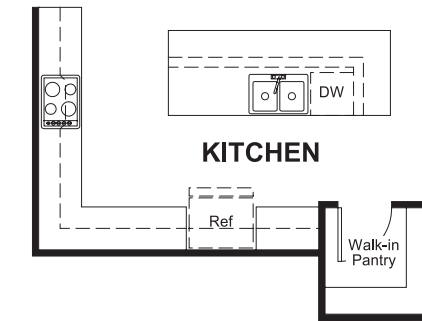
Approx. square feet: 2,350
Stories: 1
Bedrooms: 3

Garage: 2-Car
Plan Number: N610

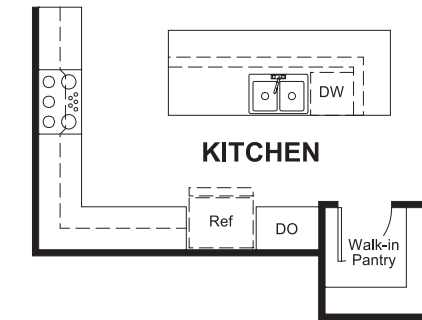
Floor Plan
Main Floor



Floor Plan
Main Floor Options



OPT. DELUXE KITCHEN



OPT. GOURMET KITCHEN

**THIS PLAN'S PROJECTED
HERS® INDEX = 66***
Projected Rating Based on Plans – Field Confirmation Required

How does this floor plan rate?
Take a look: **100** = Standard new home* **130** = Typical resale home**
The lower the number, the better! Refer to the RESNET® HERS index brochure or go to www.RESNET.us for details.

What's a HERS® Index? HERS stands for Home Energy Rating System, a system created by RESNET® to measure home energy efficiency.[^]
A Projected HERS index or rating is a computer simulation performed prior to construction by a third-party HERS rater using RESNET-accredited rating software, rated feature and specification data derived from home plans, features and specifications, and other data selected or assumed by the rater. The projected HERS index is approximate and is subject to change without notice. Actual results will vary.

*This information is presented for education purposes only. The HERS index for a confirmed rating will be determined by a third-party HERS rater based on data gathered from on-site observations and, if required, testing of rated features for a home as featured, optioned, located, oriented and/or built.
+Standard new home is based on the RESNET® Reference Home definition with a HERS® index of 100 (based on the 2006 International Energy Conservation Code).
**Typical resale home is based on the U.S. Department of Energy definition with a HERS® index of 130.

[^]RESNET® has developed the HERS® index to indicate the comparative efficiencies of homes. It is no guarantee that energy efficiencies will be achieved.