

Horseshoe Ridge at Audie Murphy
JULIA



Elevation A

Available elevations:



Elevation A



Elevation B



Elevation C



Elevation D

Approx. square feet: 2,800

Stories: 1

Bedrooms: 3 - 4

Garage: 3-car tandem

Plan Number: S27J

The ranch-style Julia plan greets guests with a charming covered front porch. Once inside, an extended entry leads to an expansive kitchen with a center island, walk-in pantry, breakfast nook and separate prep kitchen for entertaining. You'll also appreciate the inviting great room, tech center and formal dining room with adjacent covered courtyard. The luxurious master suite with optional deluxe bath is separated from two additional bedrooms for added privacy, and a gourmet kitchen is available.

COMMUNITY LOCATION

25771 Roundup Circle
Menifee, CA 92854
951-672-3581

HOME GALLERY

5171 California Avenue
Irvine, CA 92617
800-852-9714



COMMUNITY LOCATION

25771 Roundup Circle
Menifee, CA 92854
951-672-3581

HOME GALLERY

5171 California Avenue
Irvine, CA 92617
800-852-9714

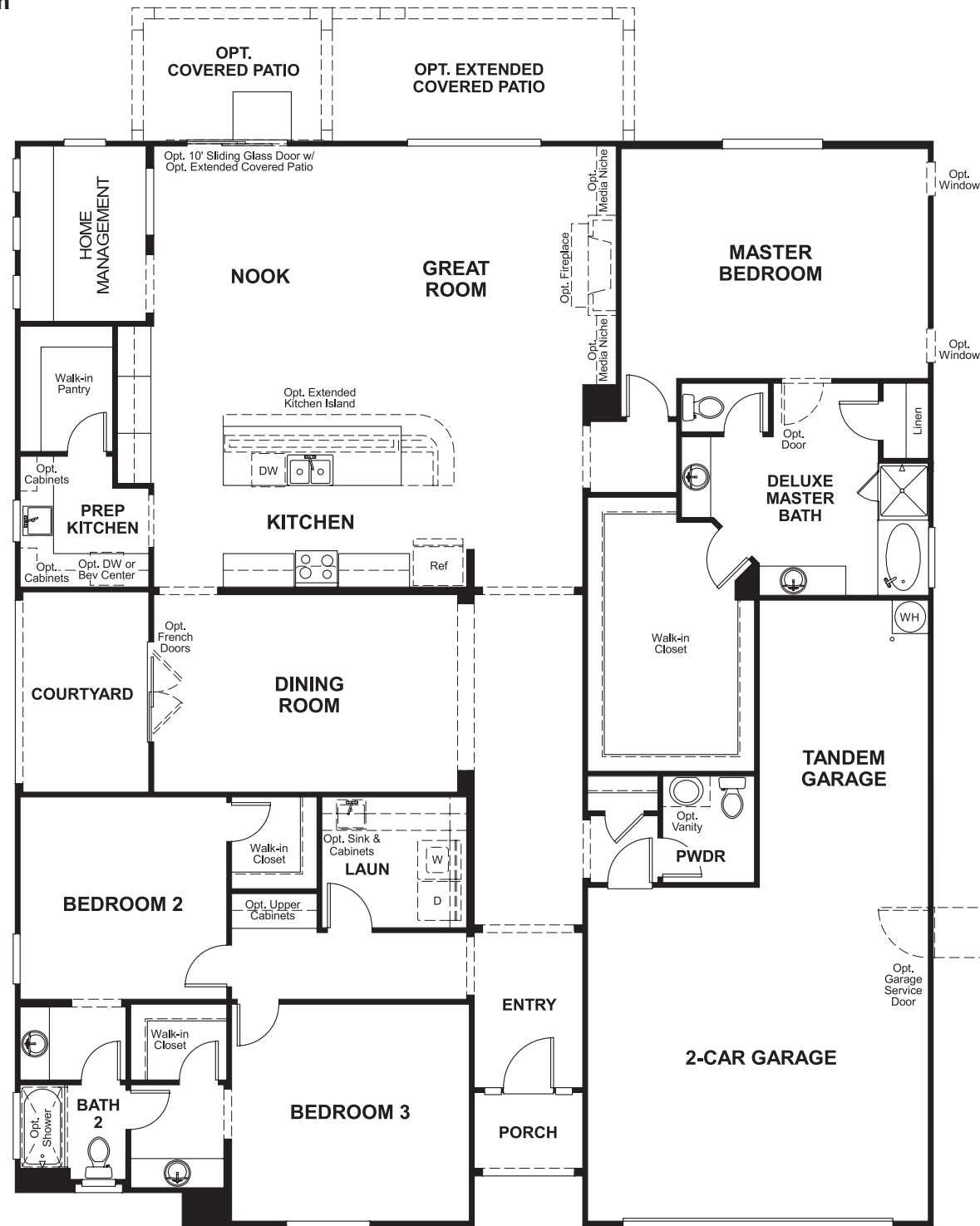


Horseshoe Ridge at Audie Murphy
JULIA

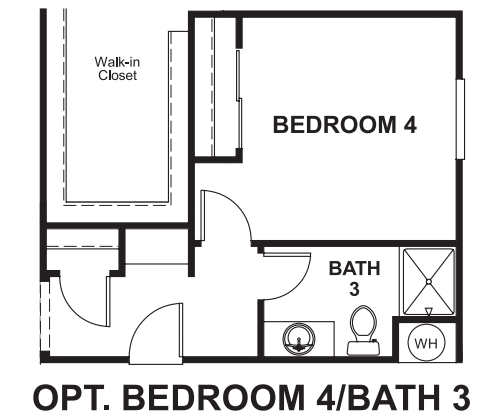
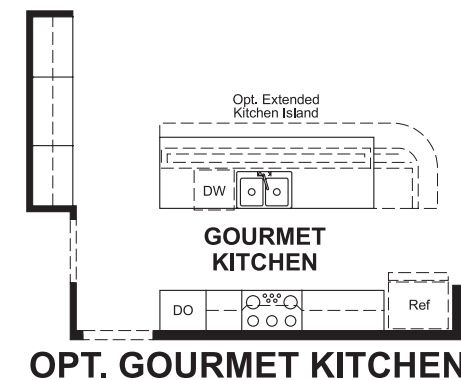
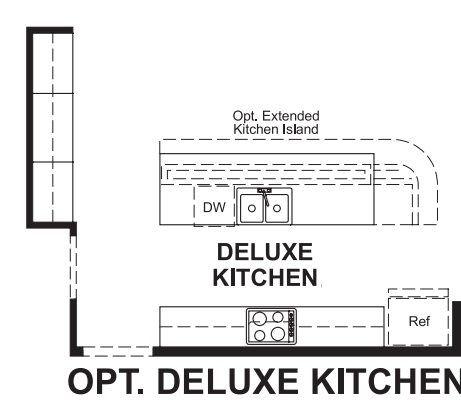
Approx. square feet: 2,800
Stories: 1
Bedrooms: 3 - 4

Garage: 3-car tandem
Plan Number: S27J

Floor Plan
Main Floor



Floor Plan
Main Floor Options



THIS PLAN'S PROJECTED HERS® INDEX = 69*
Projected Rating Based on Plans – Field Confirmation Required

How does this floor plan rate?
Take a look: **100** = Standard new home* **130** = Typical resale home**
The lower the number, the better! Refer to the RESNET® HERS index brochure or go to www.RESNET.us for details.

What's a HERS® Index? HERS stands for Home Energy Rating System, a system created by RESNET® to measure home energy efficiency. A Projected HERS index or rating is a computer simulation performed prior to construction by a third-party HERS rater using RESNET-accredited rating software, rated feature and specification data derived from home plans, features and specifications, and other data selected or assumed by the rater. The projected HERS index is approximate and is subject to change without notice. Actual results will vary.

*This information is presented for education purposes only. The HERS index for a confirmed rating will be determined by a third-party HERS rater based on data gathered from on-site observations and, if required, testing of rated features for a home as featured, optioned, located, oriented and/or built.
+Standard new home is based on the RESNET® Reference Home definition with a HERS® index of 100 (based on the 2006 International Energy Conservation Code).
++Typical resale home is based on the U.S. Department of Energy definition with a HERS® index of 130.

^RESNET® has developed the HERS® index to indicate the comparative efficiencies of homes. It is no guarantee that energy efficiencies will be achieved.