

Canyon Trails
PEARCE



Elevation A

Available elevations:



Elevation B



Elevation C

Approx. square feet: 2,980

Stories: 2

Bedrooms: 3

Garage: 2- to 3-car

Plan Number: P774

The main floor of the Pearce plan boasts a smartly designed layout, featuring a spacious great room and an eye-catching kitchen with a built-in pantry, center island and adjacent dining room with covered patio access. A powder room, flex room with storage space and a mudroom provide added convenience. The second floor offers a laundry room, a large loft and three bedrooms, including a relaxing master suite with a private bath and expansive walk-in closet. In addition to a 2-car garage, you'll also love the possibilities that come with a 40' attached RV garage! Options include additional bedrooms, an extended covered patio, gourmet kitchen features and deluxe bath upgrades.



COMMUNITY LOCATION

17336 West Hadley Street
Goodyear, AZ 85338
480-624-0244

HOME GALLERY

16427 Scottsdale Road
Scottsdale, AZ 85254
877-444-1485



COMMUNITY LOCATION

17336 West Hadley Street
Goodyear, AZ 85338
480-624-0244

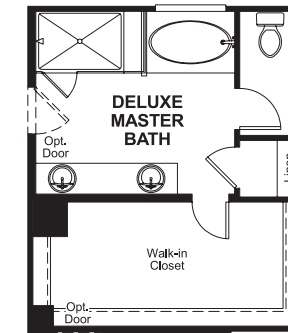
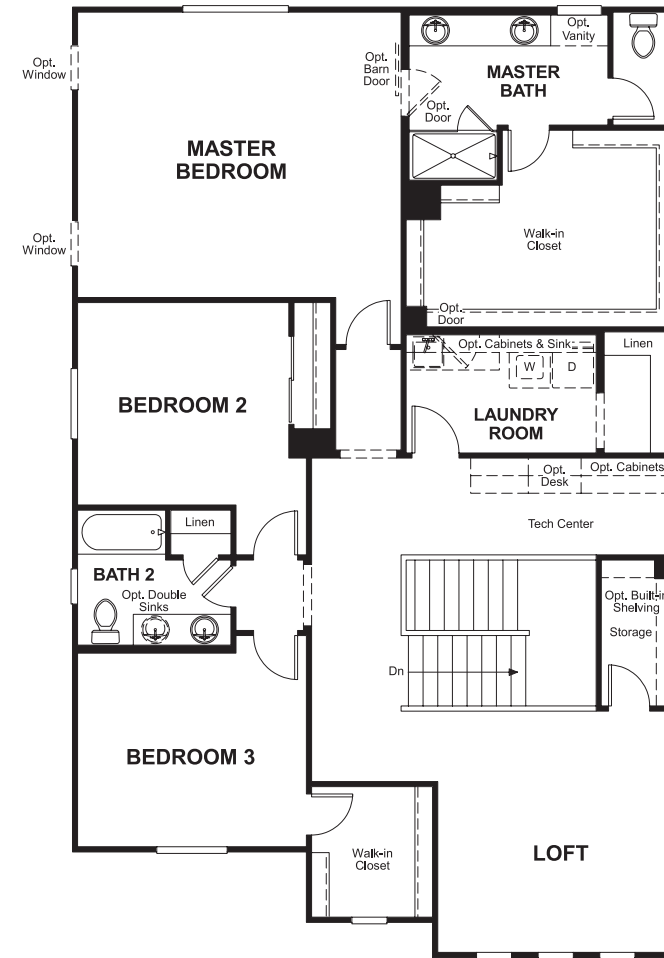
HOME GALLERY

16427 Scottsdale Road
Scottsdale, AZ 85254
877-444-1485

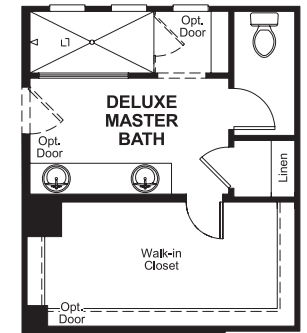
Floor Plan
Main Floor



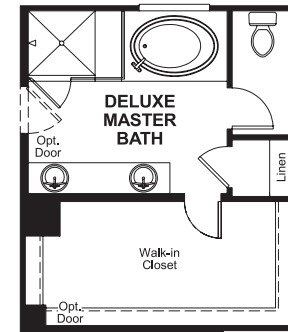
Floor Plan
Second Floor



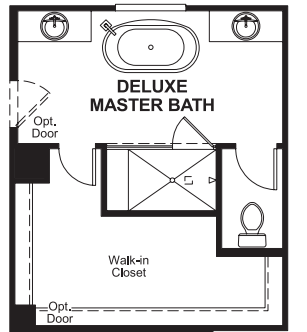
OPT. DELUXE MASTER BATH



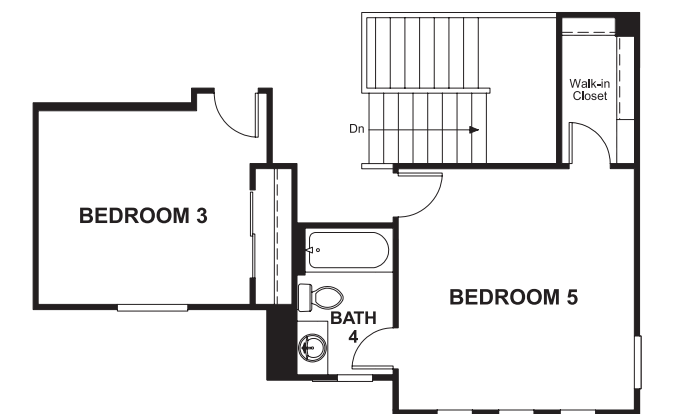
OPT. DELUXE MASTER BATH 2



OPT. DELUXE MASTER BATH 3



OPT. DELUXE MASTER BATH 4



OPT. BEDROOM 5 - BATHROOM COMBINATION

THIS PLAN'S PROJECTED HERS® INDEX = 61 *
Projected Rating Based on Plans – Field Confirmation Required

How does this floor plan rate?
Take a look: **100** = Standard new home* **130** = Typical resale home**
The lower the number, the better! Refer to the RESNET® HERS index brochure or go to www.RESNET.us for details.

What's a HERS® Index? HERS stands for Home Energy Rating System, a system created by RESNET® to measure home energy efficiency.[^]
A Projected HERS index or rating is a computer simulation performed prior to construction by a third-party HERS rater using RESNET-accredited rating software, rated feature and specification data derived from home plans, features and specifications, and other data selected or assumed by the rater. The projected HERS index is approximate and is subject to change without notice. Actual results will vary.

*This information is presented for education purposes only. The HERS index for a confirmed rating will be determined by a third-party HERS rater based on data gathered from on-site observations and, if required, testing of rated features for a home as featured, optioned, located, oriented and/or built.
+Standard new home is based on the RESNET® Reference Home definition with a HERS® index of 100 (based on the 2006 International Energy Conservation Code).
++Typical resale home is based on the U.S. Department of Energy definition with a HERS® index of 130.

[^]RESNET® has developed the HERS® index to indicate the comparative efficiencies of homes. It is no guarantee that energy efficiencies will be achieved.