

Canyon Trails
DELANEY



Elevation A

Approx. square feet: 2,250

Stories: 1

Bedrooms: 3 - 4

Garage: 2- to 3-car

Plan Number: P22D

Designed for entertaining, the ranch-style Delaney boasts a formal dining room, an expansive great room and a well-appointed kitchen with a walk-in pantry, center island and optional gourmet features. At the end of the day, relax on the covered patio or retreat to the private master suite with deluxe bath. Personalize this plan with multi-slide patio doors, an extra bedroom in lieu of the dining room and more!

Available elevations:



Elevation B



Elevation C



COMMUNITY LOCATION

17336 West Hadley Street
Goodyear, AZ 85338
480-624-0244

HOME GALLERY

16427 Scottsdale Road
Scottsdale, AZ 85254
877-444-1485



COMMUNITY LOCATION

17336 West Hadley Street
Goodyear, AZ 85338
480-624-0244

HOME GALLERY

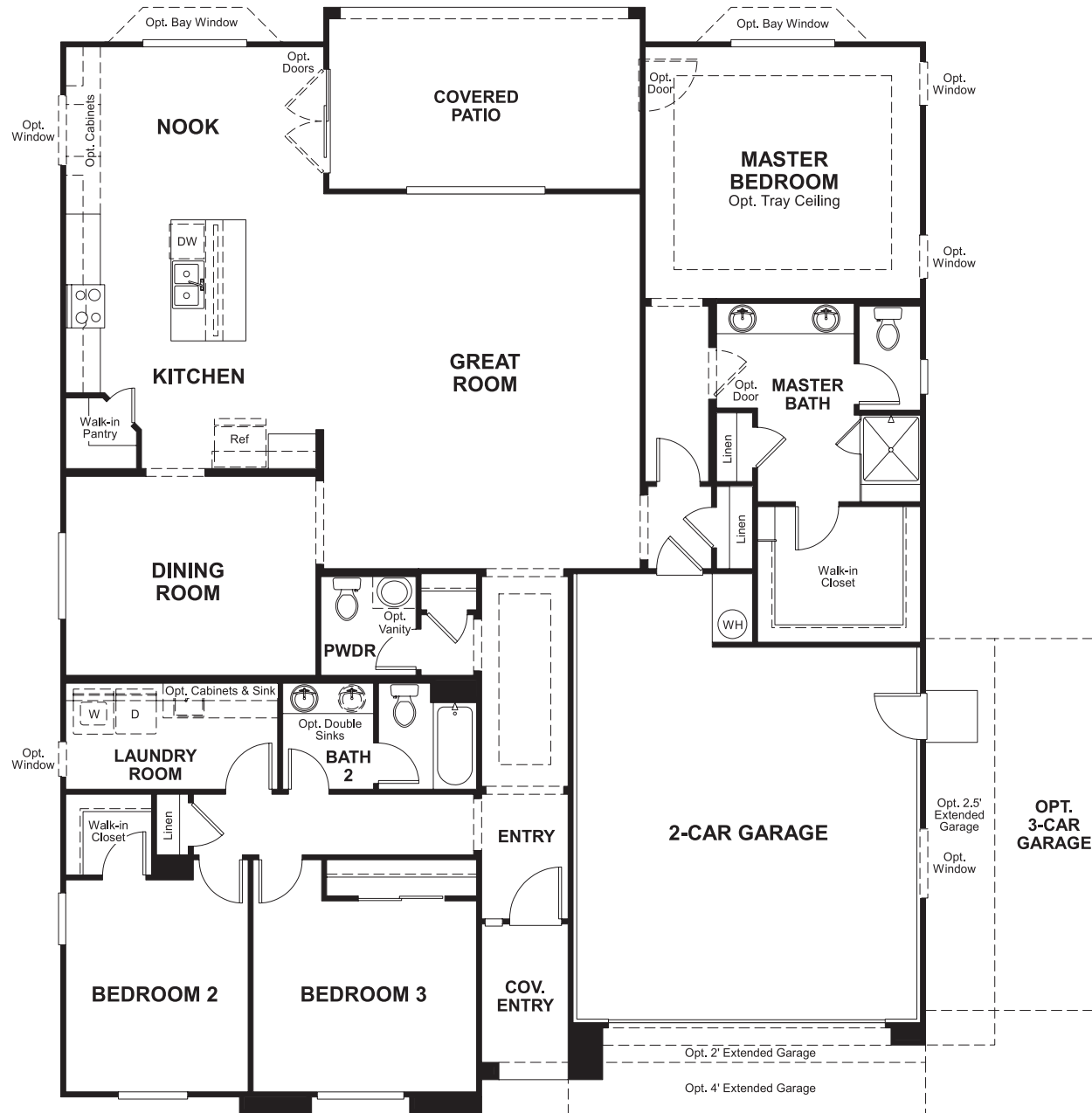
16427 Scottsdale Road
Scottsdale, AZ 85254
877-444-1485

Canyon Trails
DELANEY

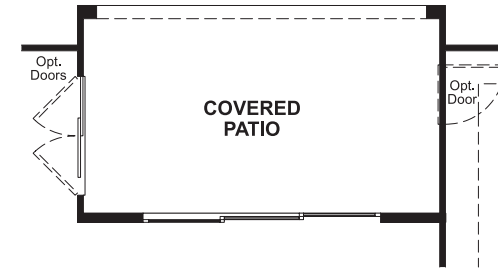
Approx. square feet: 2,250
Stories: 1
Bedrooms: 3 - 4

Garage: 2- to 3-car
Plan Number: P22D

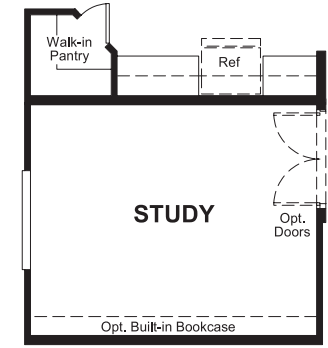
Floor Plan
Main Floor



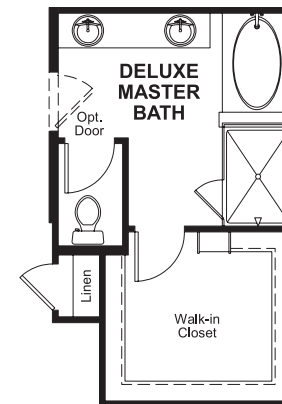
Floor Plan
Main Floor Options



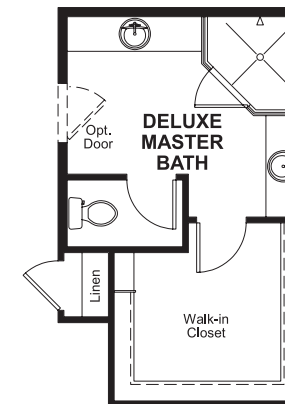
**OPT. MULTI-SLIDE DOORS
IN GREAT ROOM**



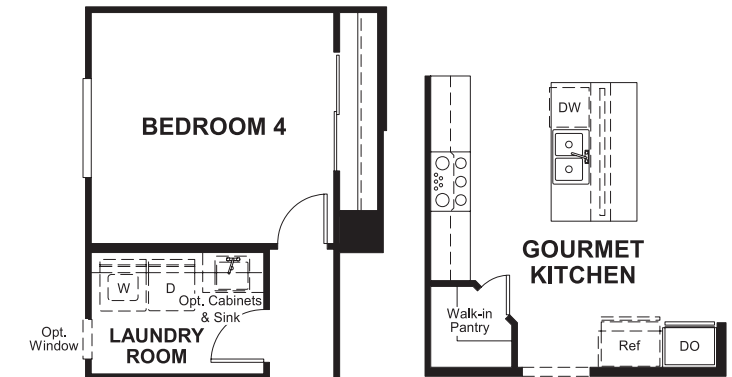
OPT. STUDY



**OPT. DELUXE
MASTER BATH**

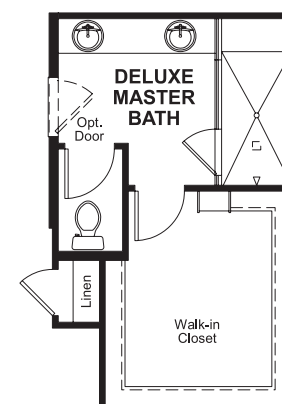


**OPT. DELUXE
MASTER BATH 2**

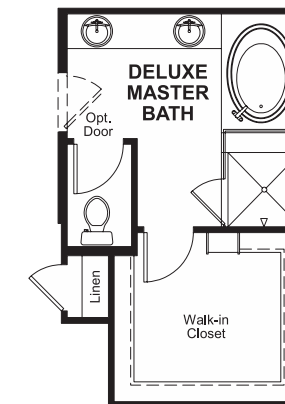


OPT. BEDROOM 4

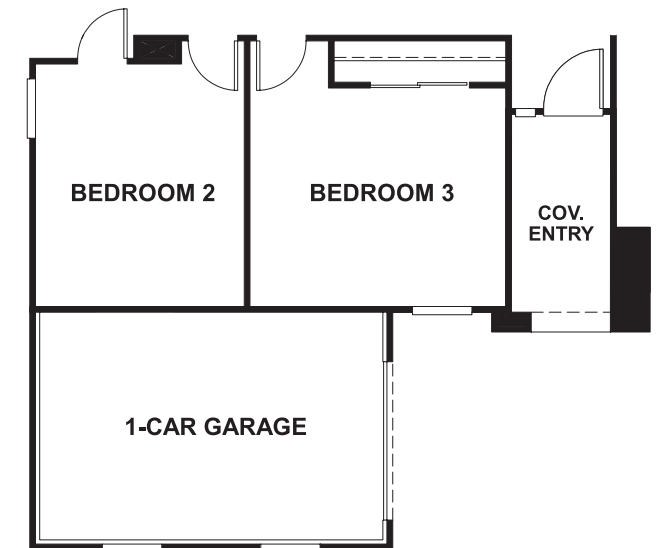
**OPT. GOURMET
KITCHEN**



**OPT. DELUXE
MASTER BATH 3**



**OPT. DELUXE
MASTER BATH 4**



OPT. SIDE-ENTRY GARAGE

**THIS PLAN'S PROJECTED
HERS® INDEX = 65***
Projected Rating Based on Plans – Field Confirmation Required

How does this floor plan rate?
Take a look: **100** = Standard new home* **130** = Typical resale home**
The lower the number, the better! Refer to the RESNET® HERS index brochure or go to www.RESNET.us for details.

What's a HERS® Index? HERS stands for Home Energy Rating System, a system created by RESNET® to measure home energy efficiency. A Projected HERS index or rating is a computer simulation performed prior to construction by a third-party HERS rater using RESNET-accredited rating software, rated feature and specification data derived from home plans, features and specifications, and other data selected or assumed by the rater. The projected HERS index is approximate and is subject to change without notice. Actual results will vary.

*This information is presented for education purposes only. The HERS index for a confirmed rating will be determined by a third-party HERS rater based on data gathered from on-site observations and, if required, testing of rated features for a home as featured, optioned, located, oriented and/or built.
+Standard new home is based on the RESNET® Reference Home definition with a HERS® index of 100 (based on the 2006 International Energy Conservation Code).
++Typical resale home is based on the U.S. Department of Energy definition with a HERS® index of 130.

^RESNET® has developed the HERS® index to indicate the comparative efficiencies of homes. It is no guarantee that energy efficiencies will be achieved.