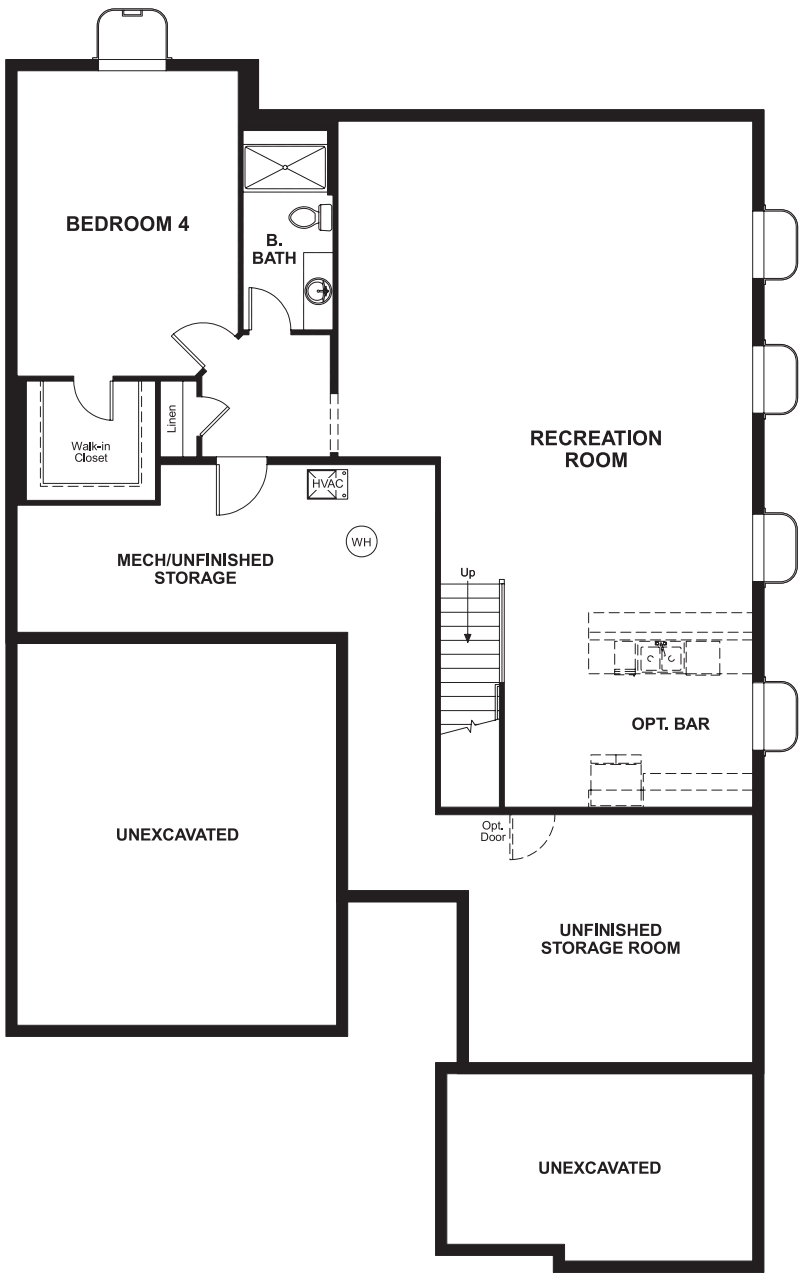


BASEMENT



ELEVATION D

ABOUT THE TYLER


Seeking a ranch-style floor plan with an open layout for entertaining? Put the Tyler at the top of your list! It offers an inviting great room, a generous dining room and kitchen with a large center island and walk-in pantry. A luxurious master suite boasts a private bath and immense walk-in closet and two additional bedrooms offer ample space for rest and relaxation. A covered patio and front- and side-entry garages complete the home. Personalize this plan with a fireplace, deluxe master bath, gourmet kitchen and finished basement.

COMMUNITY LOCATION:

Landmark at Pierson Park | 5993 Wheatberry Drive | Brighton, CO 80601 | 720.758.8901

HOME GALLERY LOCATION:

Denver Metro Home Gallery™ | 8000 East Belleview Avenue, Suite C-12 | Greenwood Village, CO 80111 | 888.402.4663

 Floor plans and renderings are conceptual drawings and may vary from actual plans and homes as built. Options and features may not be available on all homes and are subject to change without notice. Actual homes may vary from photos and/or drawings which show upgraded landscaping and may not represent the lowest-priced homes in the community. Features may include optional upgrades and may not be available on all homes. Square footage numbers are approximate and are subject to change without notice. Prices, specifications and availability subject to change without notice. ©2020 Richmond American Homes, Richmond American Homes of Colorado, Inc. 4/6/2020



ELEVATION A

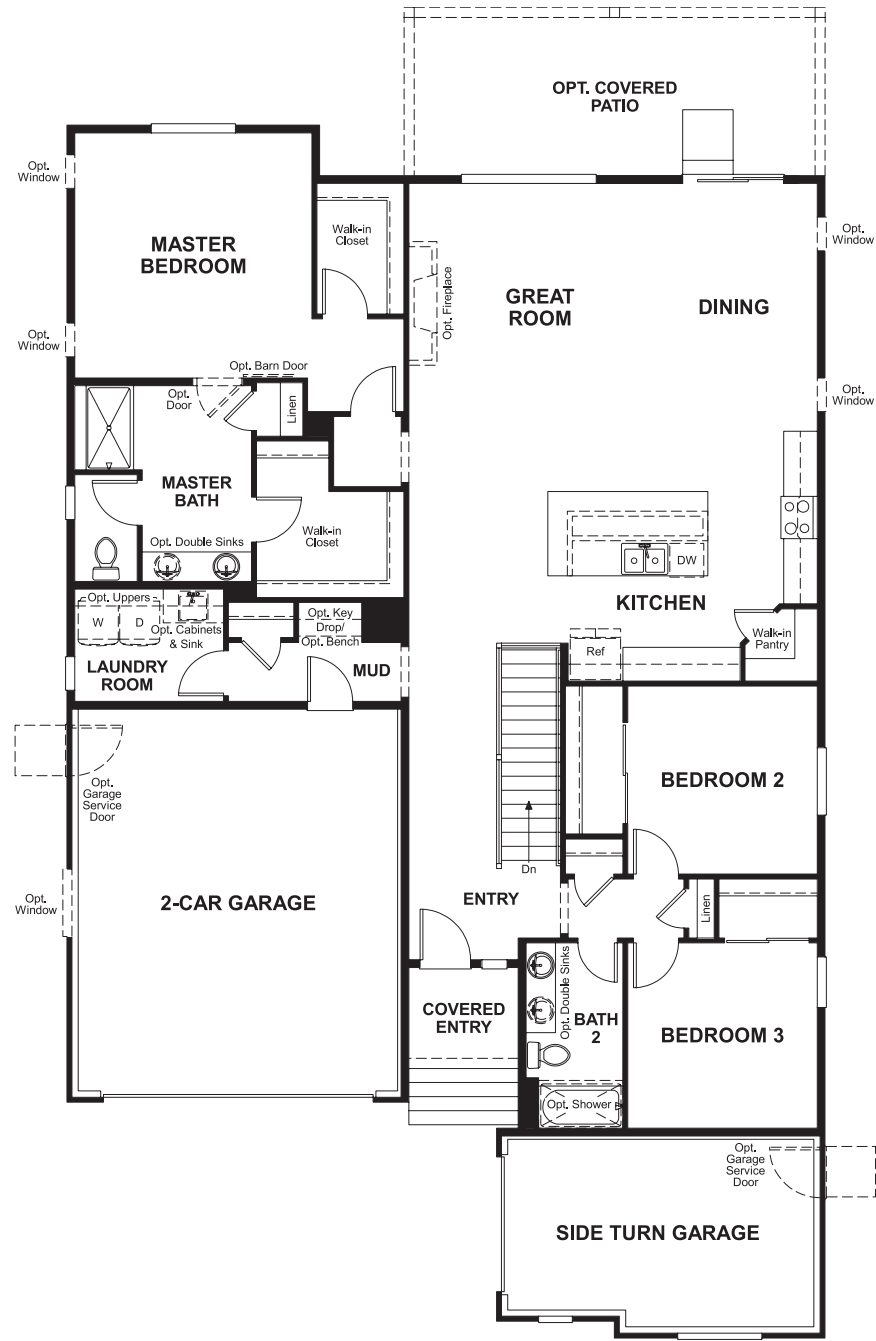


ELEVATION B

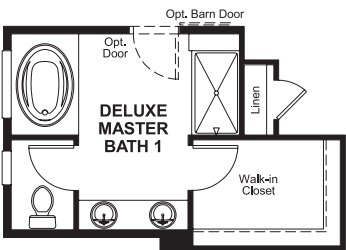


ELEVATION C

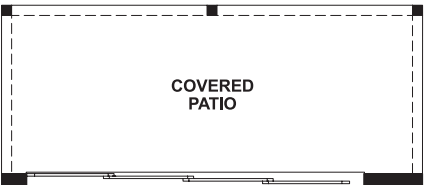
MAIN FLOOR



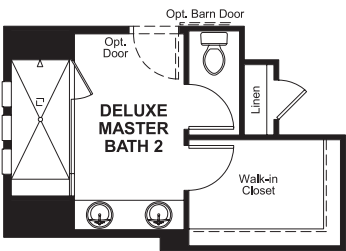
MAIN FLOOR OPTIONS



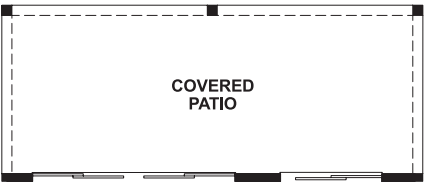
OPT. DELUXE
MASTER BATH 1



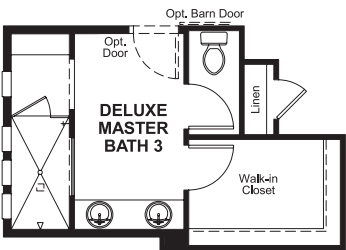
OPT. MULTI-SLIDE DOOR
W/ COVERED PATIO



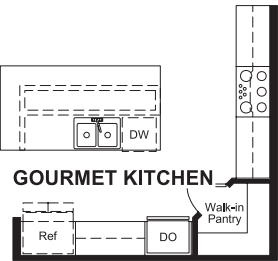
OPT. DELUXE
MASTER BATH 2



OPT. CENTER-MEET DOOR
W/ COVERED PATIO



OPT. DELUXE
MASTER BATH 3



OPT. GOURMET KITCHEN

Floor plans and renderings are conceptual drawings and may vary from actual plans and homes as built. Options and features may not be available on all homes and are subject to change without notice. Actual homes may vary from photos and/or drawings which show upgraded landscaping and may not represent the lowest-priced homes in the community. Features may include optional upgrades and may not be available on all homes. Square footage numbers are approximate and are subject to change without notice. Prices, specifications and availability subject to change without notice. ©2020 Richmond American Homes, Richmond American Homes of Colorado, Inc. 4/6/2020

Floor plans and renderings are conceptual drawings and may vary from actual plans and homes as built. Options and features may not be available on all homes and are subject to change without notice. Actual homes may vary from photos and/or drawings which show upgraded landscaping and may not represent the lowest-priced homes in the community. Features may include optional upgrades and may not be available on all homes. Square footage numbers are approximate and are subject to change without notice. Prices, specifications and availability subject to change without notice. ©2020 Richmond American Homes, Richmond American Homes of Colorado, Inc. 4/6/2020