

Maderas
REECE



Elevation A

Available elevations:



Elevation A



Elevation B



Elevation C

Approx. square feet: 3,700

Stories: 1

Bedrooms: 4

Garage: 4- to 5-car

Plan Number: P37R

The entry of the ranch-style Reece plan is flanked by a private study and a formal dining room. You'll also admire the expansive great room with optional fireplace, impressive kitchen with center island, walk-in pantry, nook and adjacent tech center, and relaxing covered patio. The master suite includes a private bath with optional deluxe features and his-and-her walk-in closets. Personalize this plan with optional multi-slide patio doors and a dedicated guest suite with fourth garage bay.



COMMUNITY LOCATION

1815 East Balsam Drive
Chandler, AZ 85331
480-624-0255

HOME GALLERY

16427 North Scottsdale Road, Suite 175
Scottsdale, AZ 21075
877-444-1485



COMMUNITY LOCATION

1815 East Balsam Drive
Chandler, AZ 85331
480-624-0255

HOME GALLERY

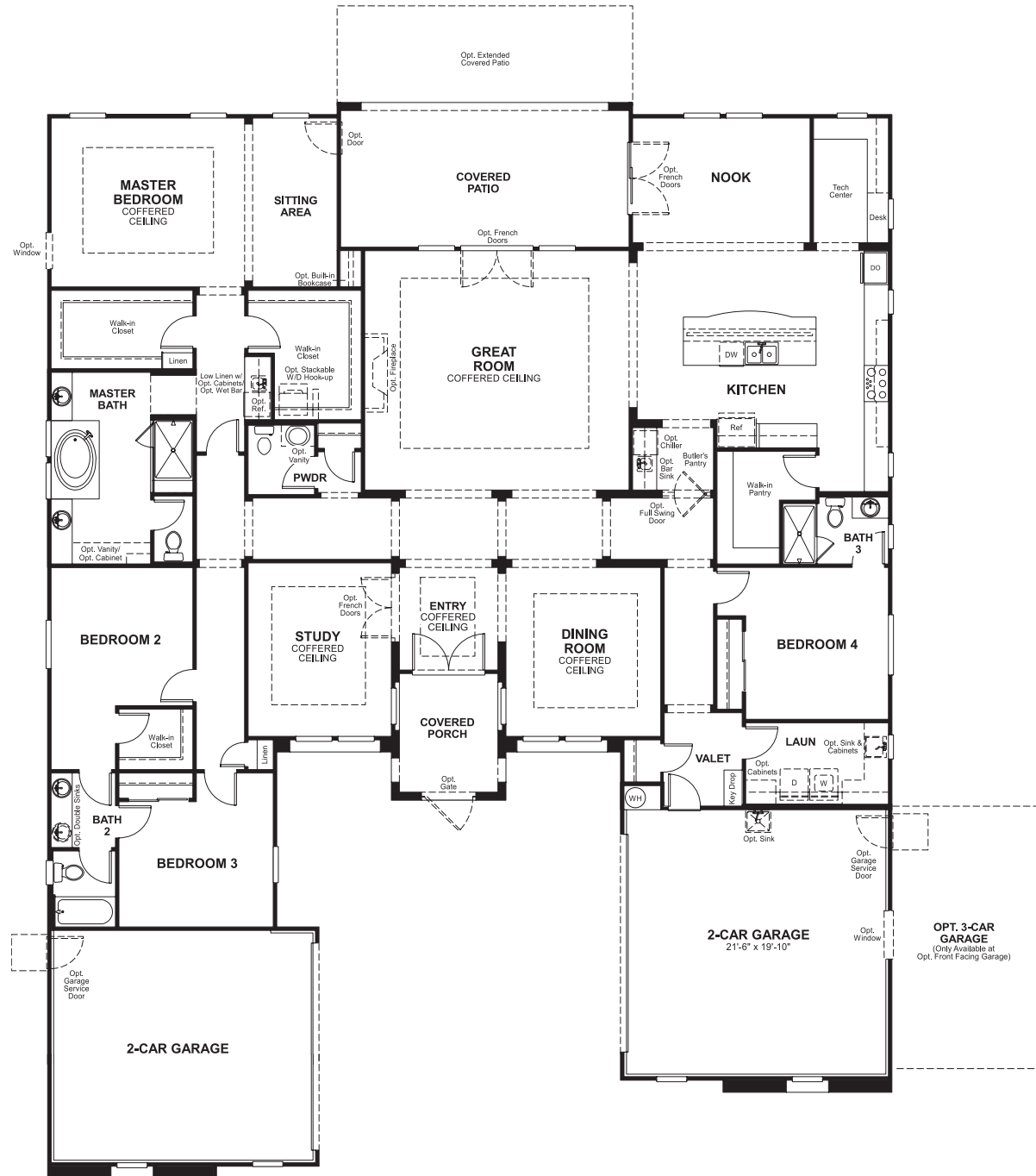
16427 North Scottsdale Road, Suite 175
Scottsdale, AZ 21075
877-444-1485

Maderas
REECE

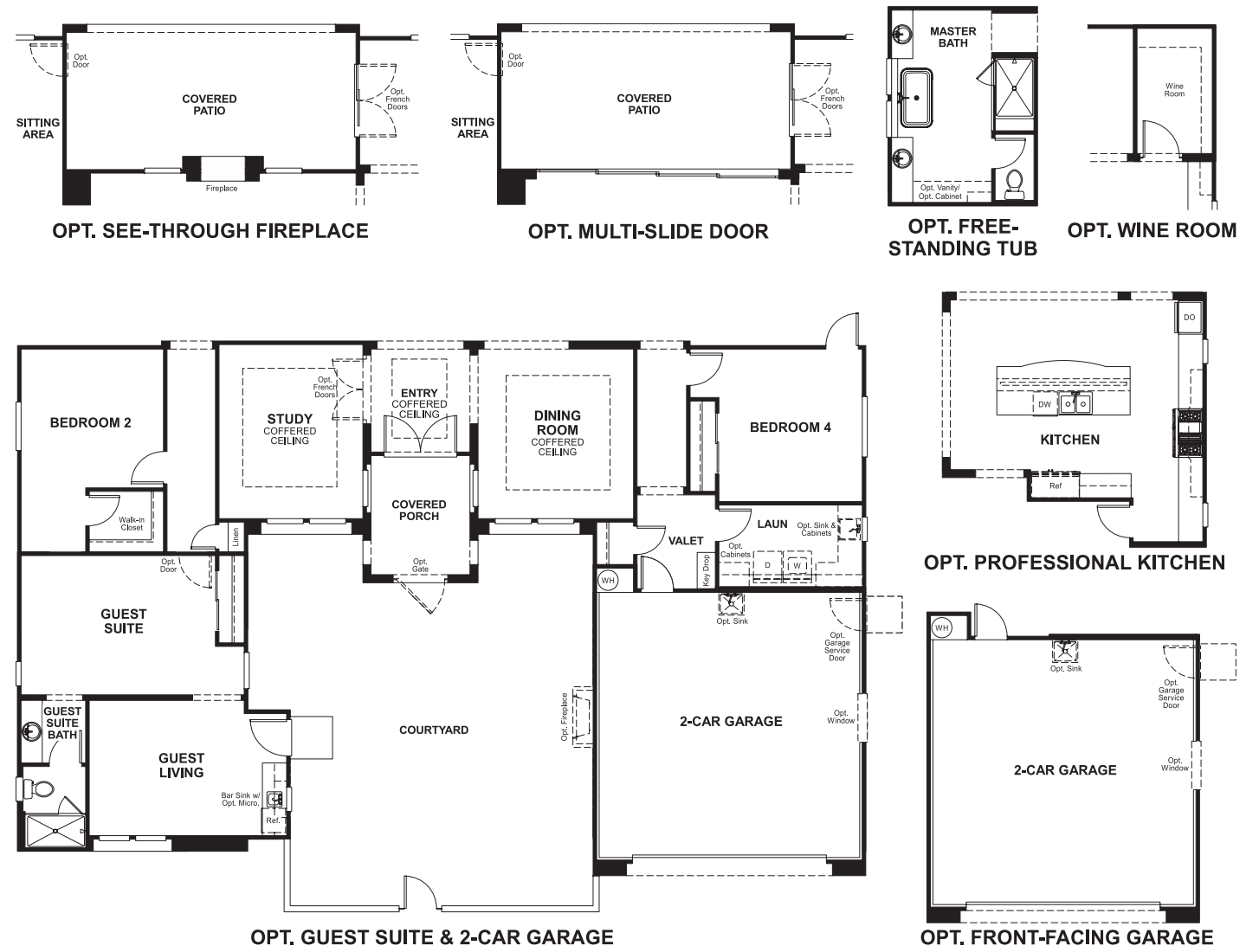
Approx. square feet: 3,700
Stories: 1
Bedrooms: 4

Garage: 4- to 5-car
Plan Number: P37R

Floor Plan
Main Floor



Floor Plan
Main Floor Options



**THIS PLAN'S PROJECTED
HERS® INDEX = 62***
Projected Rating Based on Plans – Field Confirmation Required

How does this floor plan rate?
Take a look: 100 = Standard new home* 130 = Typical resale home**
The lower the number, the better! Refer to the RESNET® HERS index brochure or go to www.RESNET.us for details.

What's a HERS® Index? HERS stands for Home Energy Rating System, a system created by RESNET® to measure home energy efficiency.^A
A Projected HERS index or rating is a computer simulation performed prior to construction by a third-party HERS rater using RESNET-accredited rating software, rated feature and specification data derived from home plans, features and specifications, and other data selected or assumed by the rater. The projected HERS index is approximate and is subject to change without notice. Actual results will vary.

*This information is presented for education purposes only. The HERS index for a confirmed rating will be determined by a third-party HERS rater based on data gathered from on-site observations and, if required, testing of rated features for a home as featured, optioned, located, oriented and/or built.
+Standard new home is based on the RESNET® Reference Home definition with a HERS® index of 100 (based on the 2006 International Energy Conservation Code).
**Typical resale home is based on the U.S. Department of Energy definition with a HERS® index of 130.

^ARESNET® has developed the HERS® index to indicate the comparative efficiencies of homes. It is no guarantee that energy efficiencies will be achieved.