

Canyon Ridge Estates
ROBYN



Elevation A

Approx. square feet: 3,250

Stories: 1

Bedrooms: 4 - 5

Garage: 4- to 5-car

Plan Number: P32R

Entertain friends and family in the single-story Robyn plan, which offers a spacious great room and a formal dining room with a butler's pantry leading into a gourmet kitchen with a center island, nook and optional professional features. The lavish master suite has dual walk-in closets and a deluxe bath, and is separated from three additional bedrooms for privacy. You'll also appreciate the quiet study, covered patio and 4-car garage.

Available elevations:



Elevation A



Elevation B



Elevation C



COMMUNITY LOCATION

5381 East Butte Canyon Circle
Cave Cree, AZ 85331
480-988-7157

HOME GALLERY

16427 North Scottsdale Road, Suite 175
Scottsdale, AZ 85254
877-444-1485



COMMUNITY LOCATION

5381 East Butte Canyon Circle
Cave Cree, AZ 85331
480-988-7157

HOME GALLERY

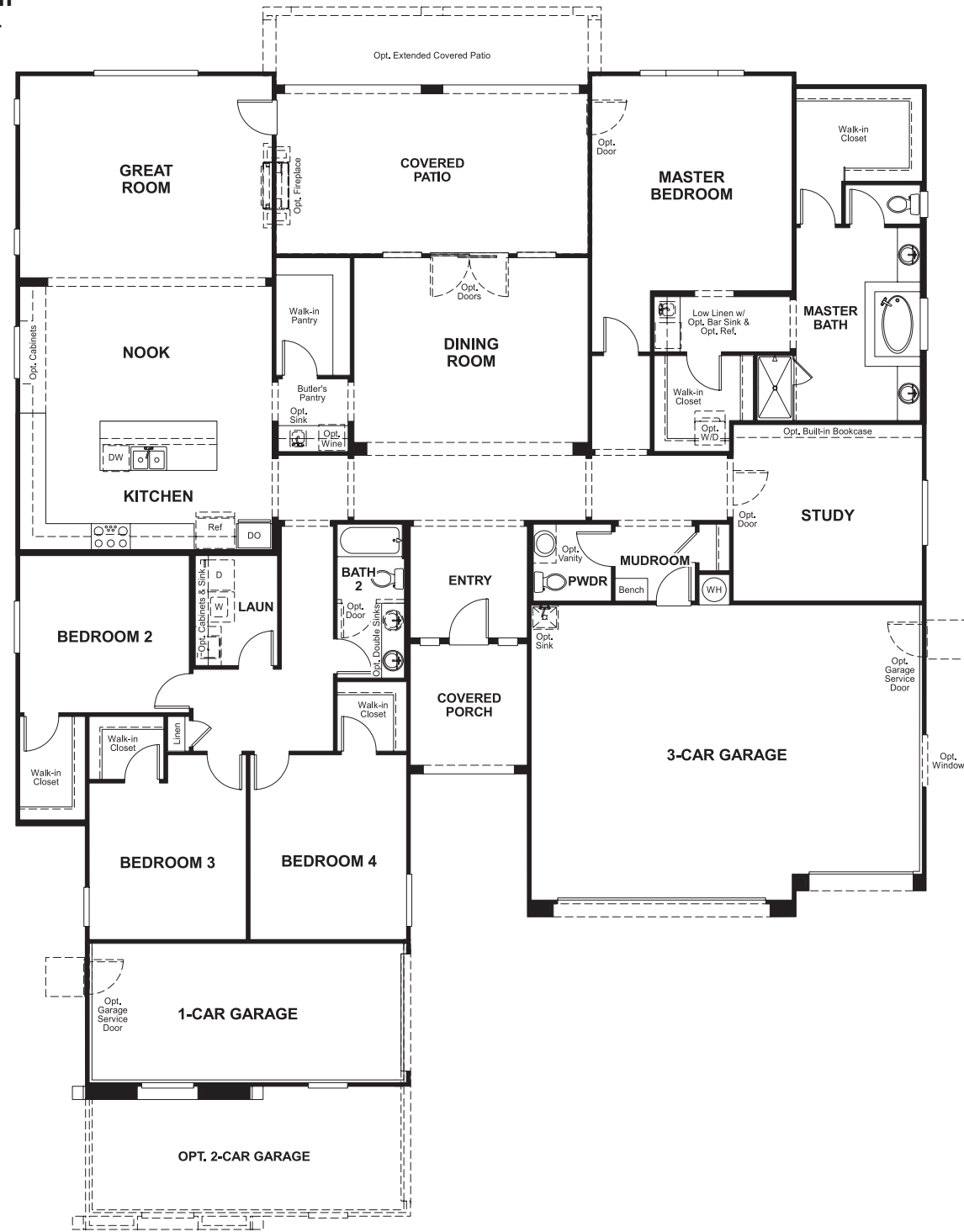
16427 North Scottsdale Road, Suite 175
Scottsdale, AZ 85254
877-444-1485

Canyon Ridge Estates
ROBYN

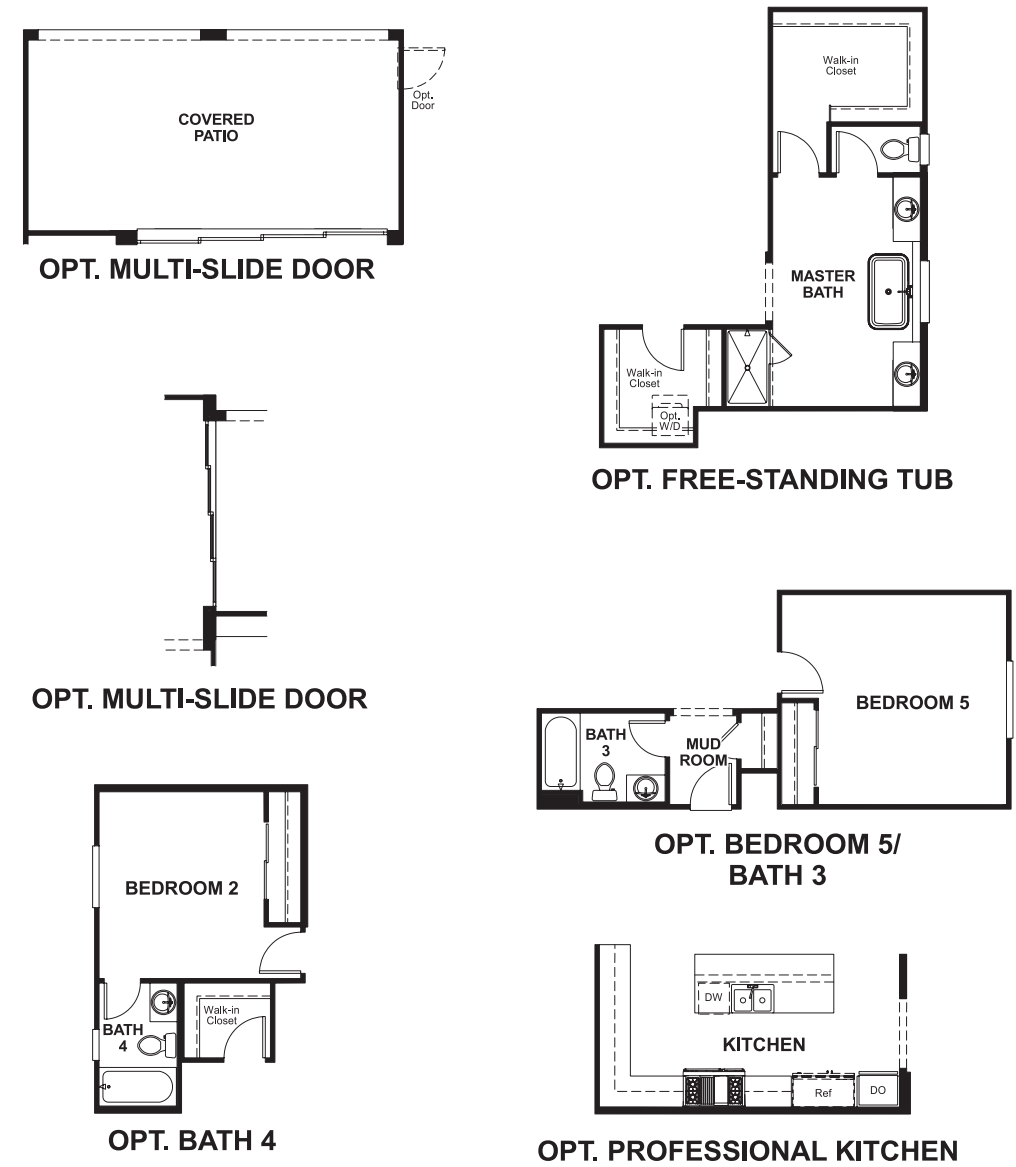
Approx. square feet: 3,250
Stories: 1
Bedrooms: 4 - 5

Garage: 4- to 5-car
Plan Number: P32R

Floor Plan
Main Floor



Floor Plan
Main Floor Options



THIS PLAN'S PROJECTED HERS® INDEX = 62*
Projected Rating Based on Plans – Field Confirmation Required

How does this floor plan rate?
Take a look: **100** = Standard new home* **130** = Typical resale home**
The lower the number, the better! Refer to the RESNET® HERS index brochure or go to www.RESNET.us for details.

What's a HERS® Index? HERS stands for Home Energy Rating System, a system created by RESNET® to measure home energy efficiency.[^]
A Projected HERS index or rating is a computer simulation performed prior to construction by a third-party HERS rater using RESNET-accredited rating software, rated feature and specification data derived from home plans, features and specifications, and other data selected or assumed by the rater. The projected HERS index is approximate and is subject to change without notice. Actual results will vary.

*This information is presented for education purposes only. The HERS index for a confirmed rating will be determined by a third-party HERS rater based on data gathered from on-site observations and, if required, testing of rated features for a home as featured, optioned, located, oriented and/or built.
+Standard new home is based on the RESNET® Reference Home definition with a HERS® index of 100 (based on the 2006 International Energy Conservation Code).
**Typical resale home is based on the U.S. Department of Energy definition with a HERS® index of 130.

[^]RESNET® has developed the HERS® index to indicate the comparative efficiencies of homes. It is no guarantee that energy efficiencies will be achieved.