

Maderas

ROBYN



Elevation A

Available elevations:



Elevation A



Elevation B



Elevation C

Approx. square feet: 3,250

Stories: 1

Bedrooms: 4 - 5

Garage: 4- to 5-car

Plan Number: P32R

Entertain friends and family in the ranch-style Robyn plan, which offers an inviting great room and a formal dining room with a convenient butler's pantry leading to a well-appointed kitchen with expansive island, nook and optional gourmet or professional features. A lavish master suite boasts dual walk-in closets, and is separated from three additional bedrooms for privacy. You'll also appreciate a quiet study, covered patio and 3-car garage.



COMMUNITY LOCATION

1815 East Balsam Drive
Chandler, AZ 85331
480-624-0255

HOME GALLERY

16427 North Scottsdale Road, Suite 175
Scottsdale, AZ 21075
877-444-1485



COMMUNITY LOCATION

1815 East Balsam Drive
Chandler, AZ 85331
480-624-0255

HOME GALLERY

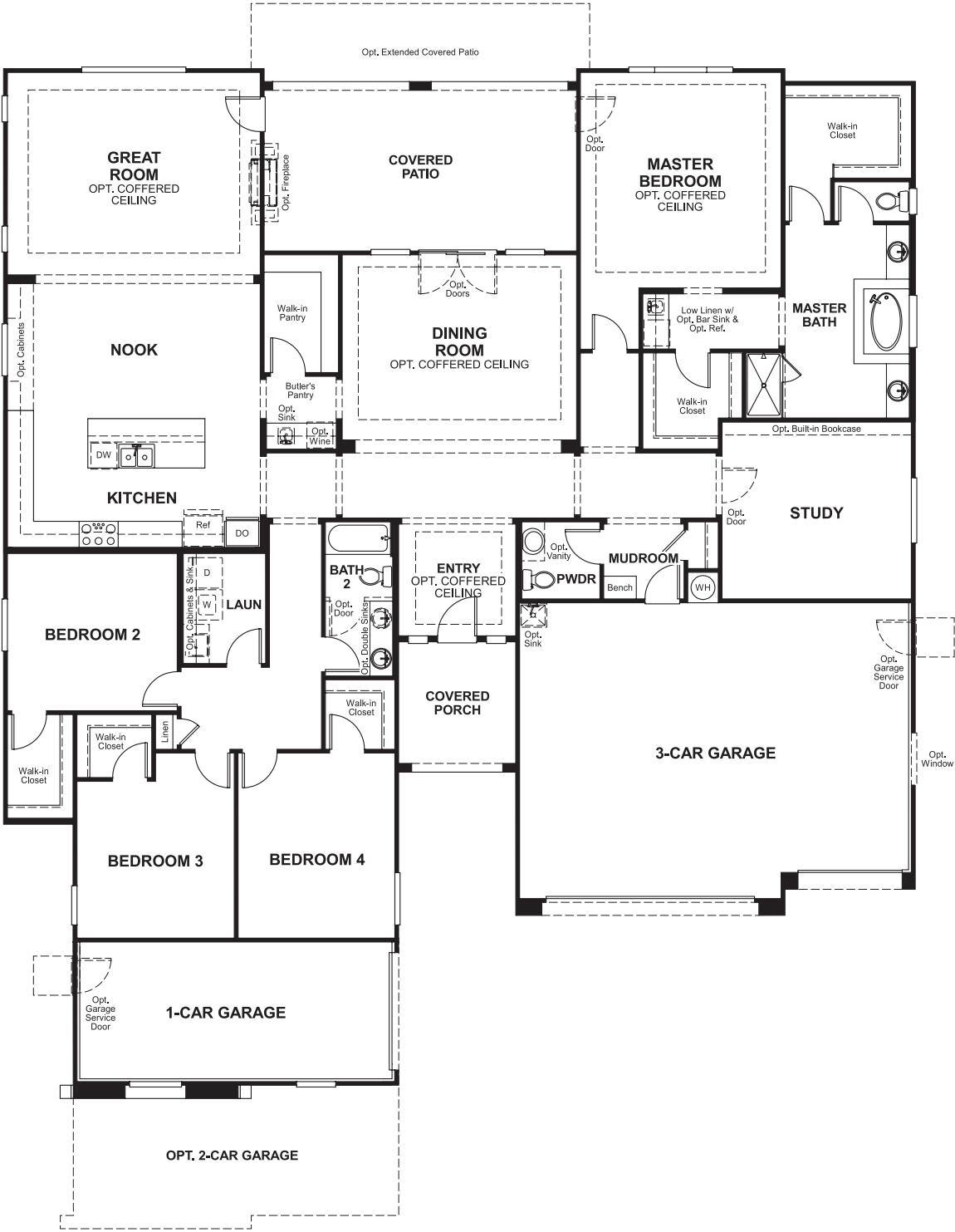
16427 North Scottsdale Road, Suite 175
Scottsdale, AZ 21075
877-444-1485

Maderas
ROBYN

Approx. square feet: 3,250
Stories: 1
Bedrooms: 4 - 5

Garage: 4- to 5-car
Plan Number: P32R

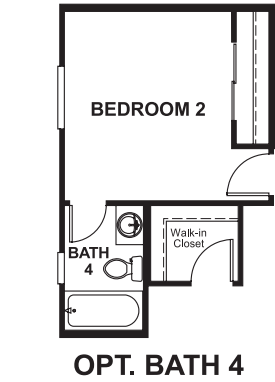
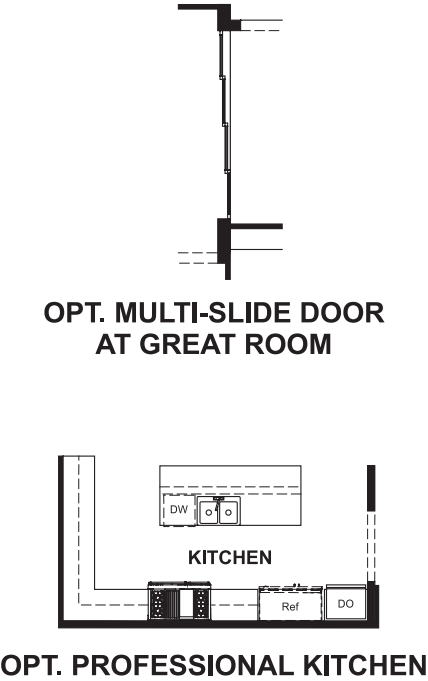
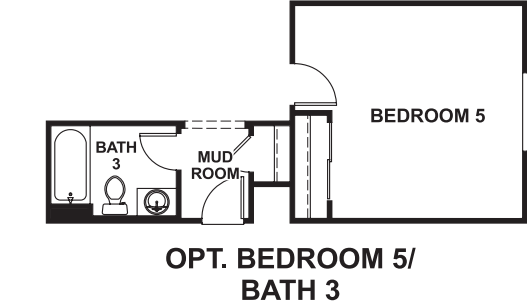
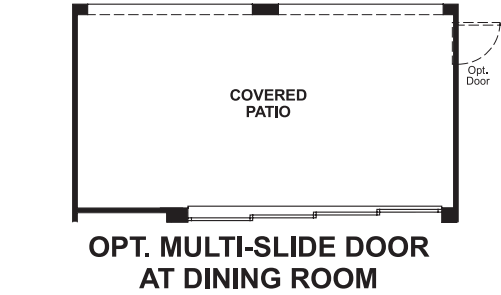
Floor Plan
Main Floor



**THIS PLAN'S PROJECTED
HERS® INDEX = 62 ***
Projected Rating Based on Plans – Field Confirmation Required

How does this floor plan rate?
Take a look: **100** = Standard new home* **130** = Typical resale home**
The lower the number, the better! Refer to the RESNET® HERS index brochure or go to www.RESNET.us for details.

Floor Plan
Main Floor Options



What's a HERS® Index? HERS stands for Home Energy Rating System, a system created by RESNET® to measure home energy efficiency.^
A Projected HERS index or rating is a computer simulation performed prior to construction by a third-party HERS rater using RESNET-accredited rating software, rated feature and specification data derived from home plans, features and specifications, and other data selected or assumed by the rater. The projected HERS index is approximate and is subject to change without notice. Actual results will vary.

*This information is presented for education purposes only. The HERS index for a confirmed rating will be determined by a third-party HERS rater based on data gathered from on-site observations and, if required, testing of rated features for a home as featured, optioned, located, oriented and/or built.
+Standard new home is based on the RESNET® Reference Home definition with a HERS® index of 100 (based on the 2006 International Energy Conservation Code).
++Typical resale home is based on the U.S. Department of Energy definition with a HERS® index of 130.

^RESNET® has developed the HERS® index to indicate the comparative efficiencies of homes. It is no guarantee that energy efficiencies will be achieved.