

Mulberry at University District  
**SAMSON**



**Elevation A**

**Approx. square feet:** 2,400  
**Stories:** 2  
**Bedrooms:** 3 - 5  
**Garage:** 2-car  
**Plan Number:** N709

An elegant two-story foyer is one of many highlights the Sampson plan has to offer. On the main level, a spacious great room flows into an open-concept dining room and kitchen, complete with a convenient walk-in pantry. You'll also enjoy a secluded study and adjacent powder room. Head upstairs to explore a versatile loft and two inviting bedrooms—including a lavish master suite that boasts dual sinks, a separate tub and shower and a walk-in closet.

**Available elevations:**



**Elevation A**



**Elevation B**



**Elevation C**

**COMMUNITY LOCATION**

1544 Keats Place  
Rohnert Park, CA 94928  
707-346-8032

**HOME GALLERY**

One Harbor Center, Suite 150  
Suisun City, CA 94585  
800-852-9714



**COMMUNITY LOCATION**

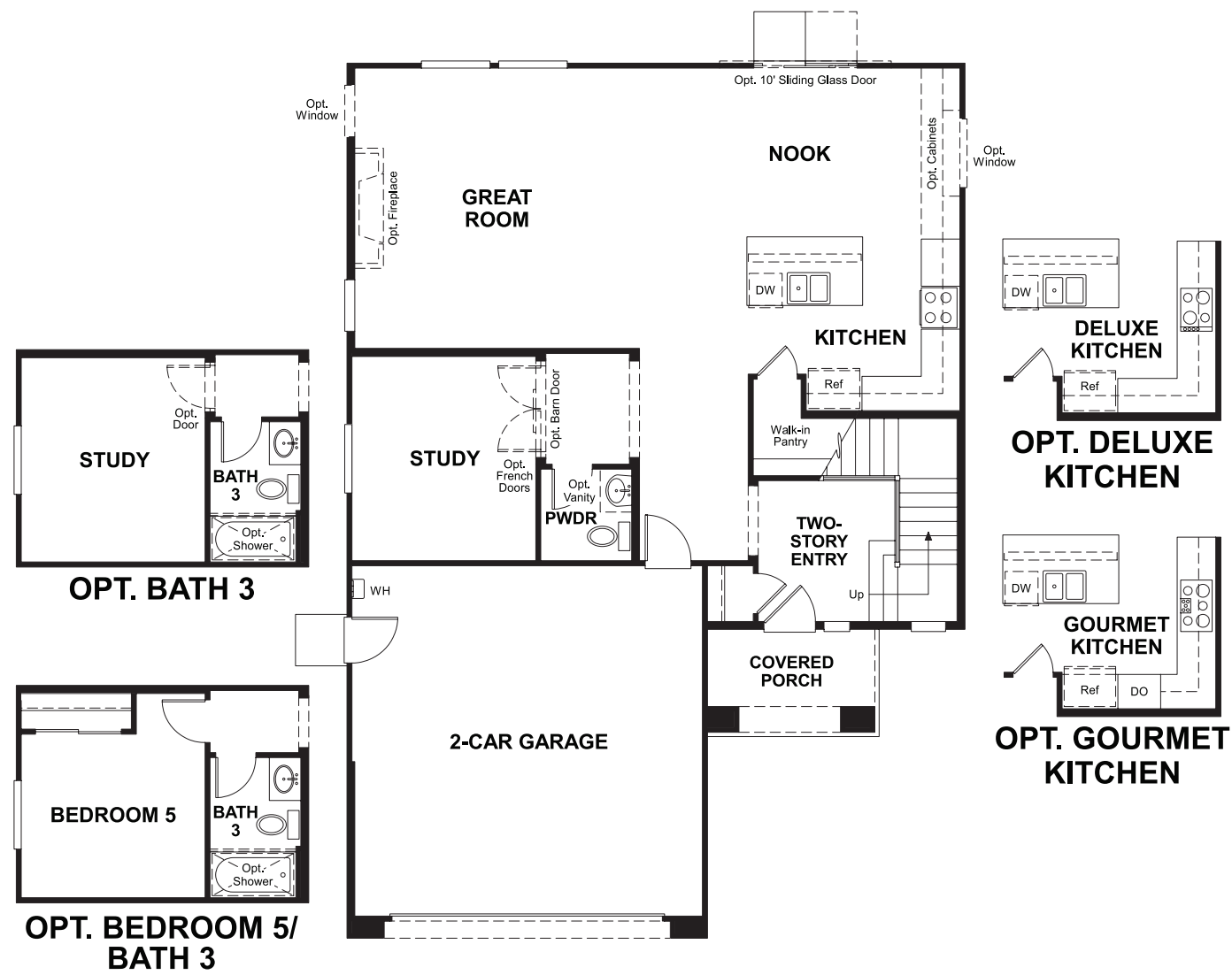
1544 Keats Place  
Rohnert Park, CA 94928  
707-346-8032

**HOME GALLERY**

One Harbor Center, Suite 150  
Suisun City, CA 94585  
800-852-9714



**Floor Plan**  
Main Floor



**Floor Plan**  
Second Floor



**THIS PLAN'S PROJECTED  
HERS® INDEX = 76\***  
Projected Rating Based on Plans – Field Confirmation Required

**How does this floor plan rate?**  
Take a look: **100** = Standard new home\* **130** = Typical resale home\*\*  
The lower the number, the better! Refer to the RESNET® HERS index brochure or go to [www.RESNET.us](http://www.RESNET.us) for details.

**What's a HERS® Index?** HERS stands for Home Energy Rating System, a system created by RESNET® to measure home energy efficiency.<sup>^</sup>  
A Projected HERS index or rating is a computer simulation performed prior to construction by a third-party HERS rater using RESNET-accredited rating software, rated feature and specification data derived from home plans, features and specifications, and other data selected or assumed by the rater. The projected HERS index is approximate and is subject to change without notice. Actual results will vary.

\*This information is presented for education purposes only. The HERS index for a confirmed rating will be determined by a third-party HERS rater based on data gathered from on-site observations and, if required, testing of rated features for a home as featured, optioned, located, oriented and/or built.  
+Standard new home is based on the RESNET® Reference Home definition with a HERS® index of 100 (based on the 2006 International Energy Conservation Code).  
++Typical resale home is based on the U.S. Department of Energy definition with a HERS® index of 130.

<sup>^</sup>RESNET® has developed the HERS® index to indicate the comparative efficiencies of homes. It is no guarantee that energy efficiencies will be achieved.