

Mulberry at University District
SANDOVAL



Elevation A

Available elevations:



Elevation A



Elevation B



Elevation C

Approx. square feet: 2,500
Stories: 2
Bedrooms: 3 - 5
Garage: 2-car
Plan Number: N710

A charming front porch graces the entrance to the Sandoval plan. Inside, a smartly designed main floor includes a private study and nearby powder room, and owner's entry off the garage, an expansive great room and a spacious kitchen with a large walk-in pantry and adjacent dining room. Upstairs, you'll enjoy a convenient laundry room, a loft that can be converted into an extra bedroom, plus two bedrooms and a master suite with dual walk-in closets and a separate tub and shower.

COMMUNITY LOCATION
1544 Keats Place
Rohnert Park, CA 94928
925-730-5770

HOME GALLERY
One Harbor Center, Suite 150
Suisun City, CA 94585
800-852-9714



COMMUNITY LOCATION
1544 Keats Place
Rohnert Park, CA 94928
925-730-5770

HOME GALLERY
One Harbor Center, Suite 150
Suisun City, CA 94585
800-852-9714

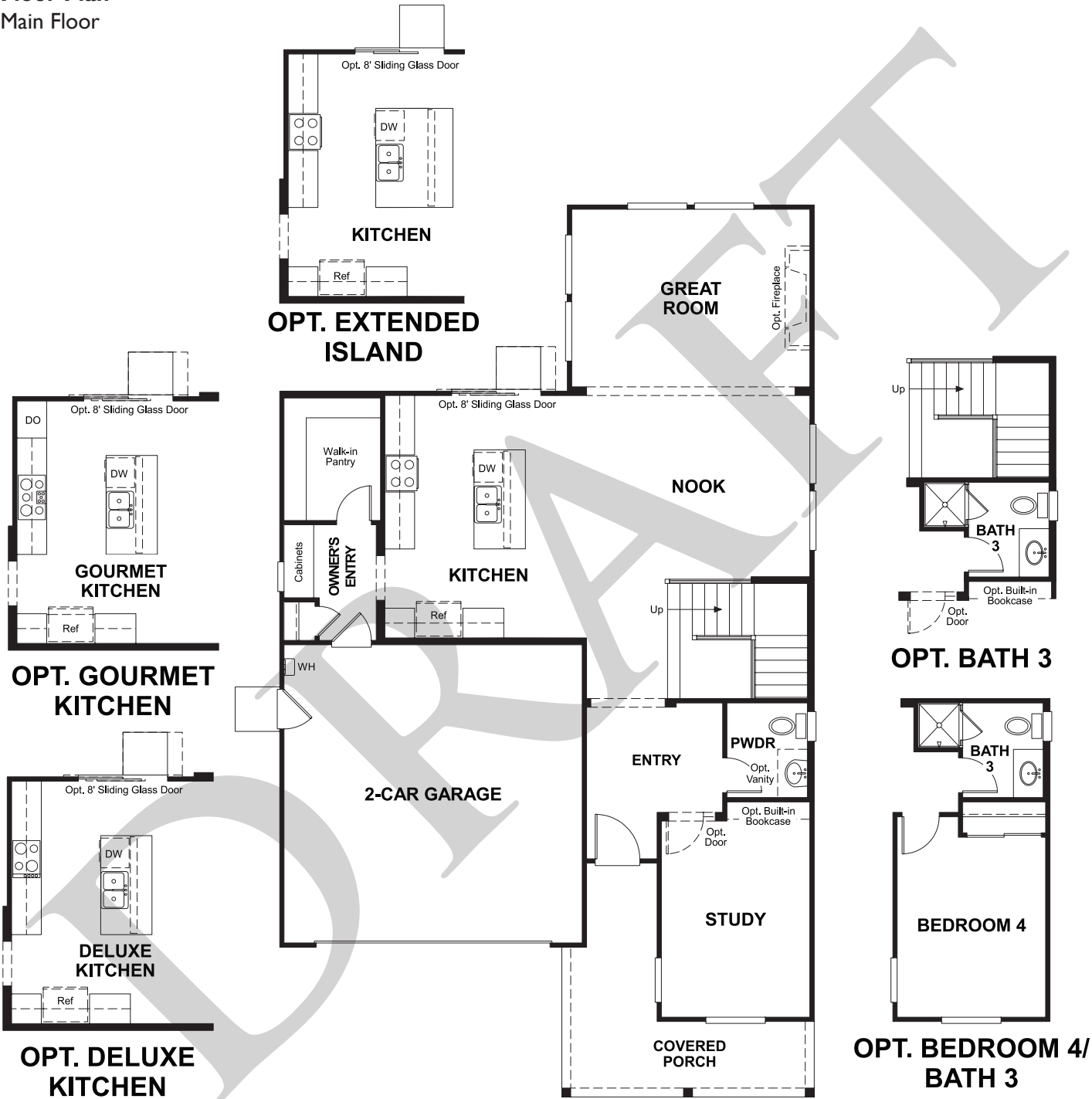


Mulberry at University District
SANDOVAL

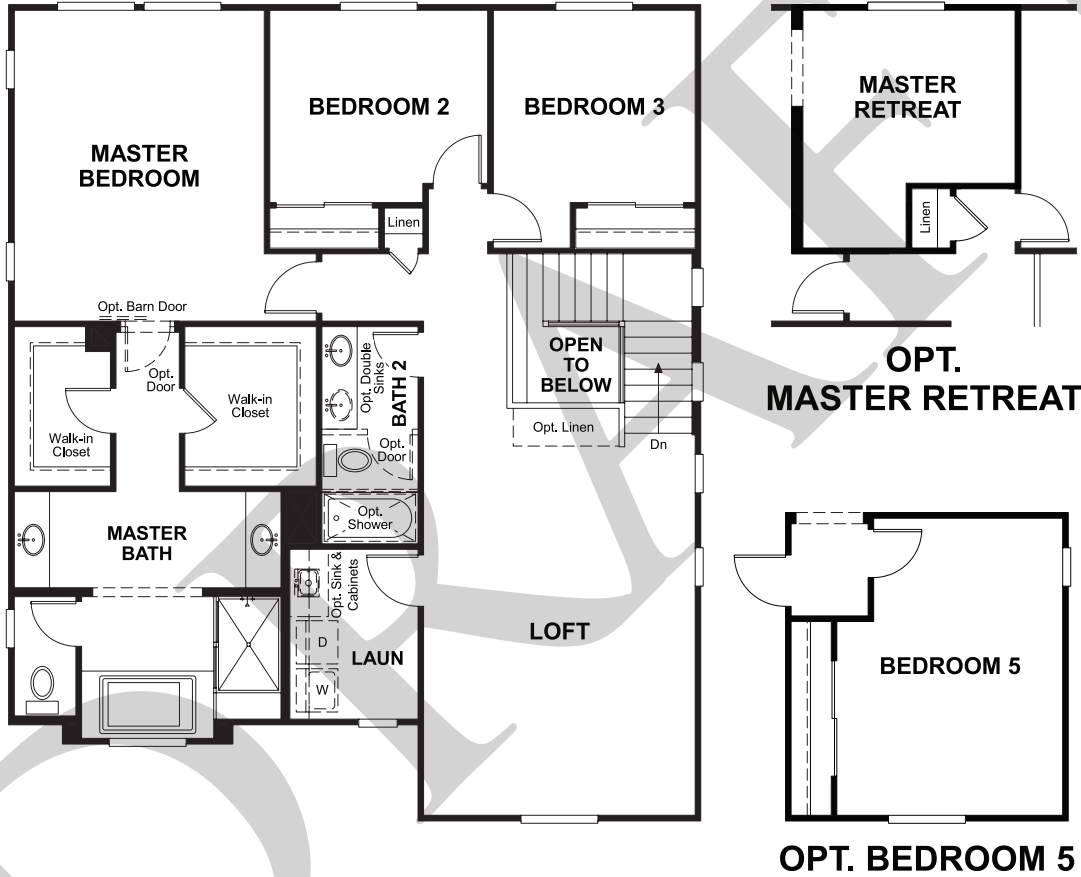
Approx. square feet: 2,500
Stories: 2
Bedrooms: 3 - 5

Garage: 2-car
Plan Number: N710

Floor Plan
Main Floor



Floor Plan
Second Floor



**THIS PLAN'S PROJECTED
HERS® INDEX = 77 ***
Projected Rating Based on Plans – Field Confirmation Required

How does this floor plan rate?
Take a look: **100** = Standard new home* **130** = Typical resale home**
The lower the number, the better! Refer to the RESNET® HERS index brochure or go to www.RESNET.us for details.

What's a HERS® Index? HERS stands for Home Energy Rating System, a system created by RESNET® to measure home energy efficiency.^
A Projected HERS index or rating is a computer simulation performed prior to construction by a third-party HERS rater using RESNET-accredited rating software, rated feature and specification data derived from home plans, features and specifications, and other data selected or assumed by the rater. The projected HERS index is approximate and is subject to change without notice. Actual results will vary.

*This information is presented for education purposes only. The HERS index for a confirmed rating will be determined by a third-party HERS rater based on data gathered from on-site observations and, if required, testing of rated features for a home as featured, optioned, located, oriented and/or built.
+Standard new home is based on the RESNET® Reference Home definition with a HERS® index of 100 (based on the 2006 International Energy Conservation Code).
++Typical resale home is based on the U.S. Department of Energy definition with a HERS® index of 130.

^RESNET® has developed the HERS® index to indicate the comparative efficiencies of homes. It is no guarantee that energy efficiencies will be achieved.