

Horizon Park  
**SARAH**



**Elevation A**

**Approx. square feet:** 2,150  
**Stories:** 1  
**Bedrooms:** 3 - 4  
**Garage:** 2-car  
**Plan Number:** L21S

The versatile Sarah plan offers an open great room and kitchen, three bedrooms, a convenient laundry and a study—all on one floor. Personalize your space with a dining room or additional bedroom in lieu of the study, plus an additional powder bath.

**Available elevations:**



**Elevation A**



**Elevation B**



**Elevation C**

**COMMUNITY LOCATION**  
 4008 Celebration Cove Street  
 North Las Vegas, NV 89032  
 702-638-4440

**HOME GALLERY**  
 7770 S. Dean Martin Drive, Suite 308  
 Las Vegas, NV 89139  
 702-617-8400



**COMMUNITY LOCATION**  
 4008 Celebration Cove Street  
 North Las Vegas, NV 89032  
 702-638-4440

**HOME GALLERY**  
 7770 S. Dean Martin Drive, Suite 308  
 Las Vegas, NV 89139  
 702-617-8400

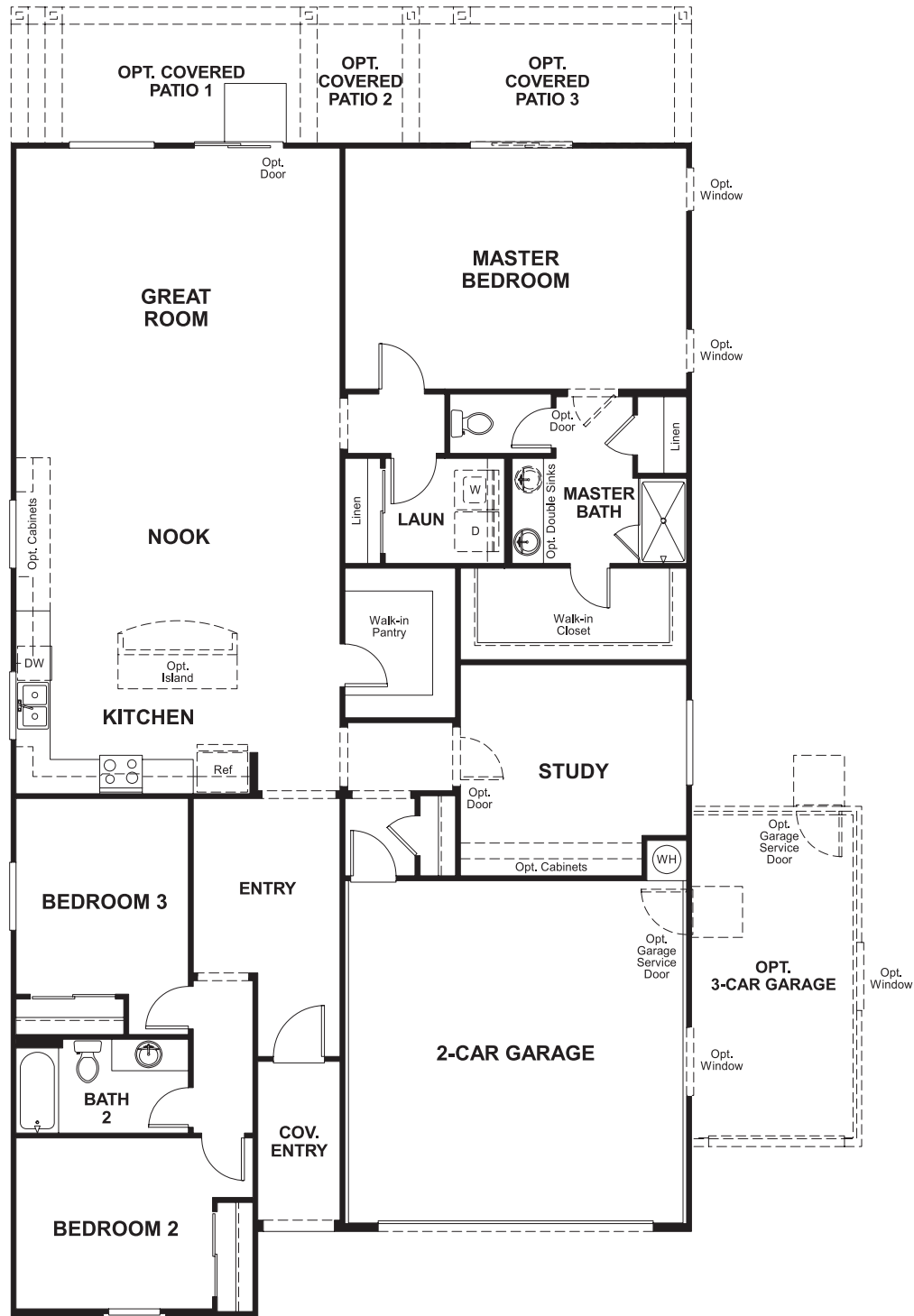


Horizon Park  
**SARAH**

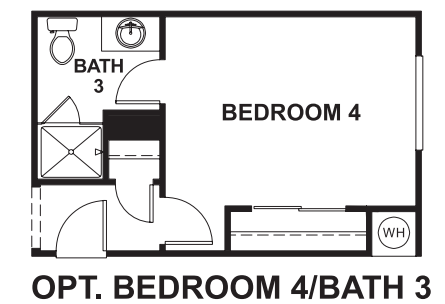
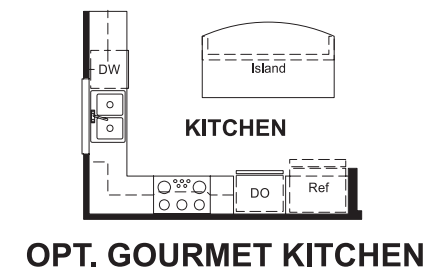
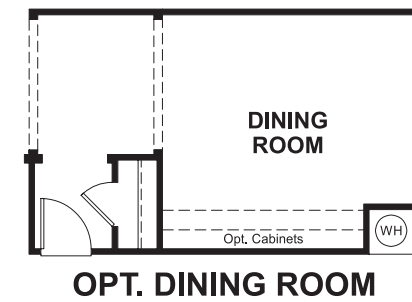
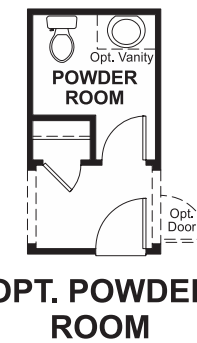
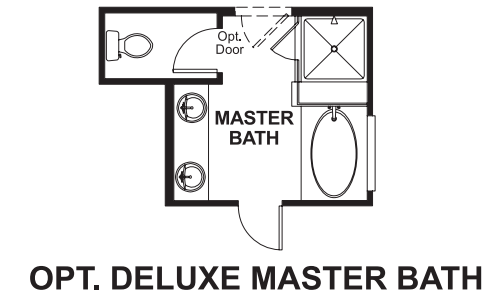
Approx. square feet: 2,150  
Stories: 1  
Bedrooms: 3 - 4

Garage: 2-car  
Plan Number: L21S

**Floor Plan**  
Main Floor



**Floor Plan**  
Main Floor Options



**THIS PLAN'S PROJECTED  
HERS® INDEX = 71** \*  
Projected Rating Based on Plans – Field Confirmation Required

**How does this floor plan rate?**  
Take a look: **100** = Standard new home\* **130** = Typical resale home\*\*  
The lower the number, the better! Refer to the RESNET® HERS index brochure or go to [www.RESNET.us](http://www.RESNET.us) for details.

**What's a HERS® Index?** HERS stands for Home Energy Rating System, a system created by RESNET® to measure home energy efficiency.<sup>^</sup>  
A Projected HERS index or rating is a computer simulation performed prior to construction by a third-party HERS rater using RESNET-accredited rating software, rated feature and specification data derived from home plans, features and specifications, and other data selected or assumed by the rater. The projected HERS index is approximate and is subject to change without notice. Actual results will vary.

\*This information is presented for education purposes only. The HERS index for a confirmed rating will be determined by a third-party HERS rater based on data gathered from on-site observations and, if required, testing of rated features for a home as featured, optioned, located, oriented and/or built.  
+Standard new home is based on the RESNET® Reference Home definition with a HERS® index of 100 (based on the 2006 International Energy Conservation Code).  
\*\*Typical resale home is based on the U.S. Department of Energy definition with a HERS® index of 130.

<sup>^</sup>RESNET® has developed the HERS® index to indicate the comparative efficiencies of homes. It is no guarantee that energy efficiencies will be achieved.