

Chaparral at The Ranch
THOMAS



Elevation A

Available elevations:



Elevation A



Elevation B



Elevation C

Approx. square feet: 3,050

Stories: 2

Bedrooms: 3

Garage: 3-car

Plan Number: S30T

The inviting Thomas plan merges comfort, convenience and style. The main floor offers a quiet study that can be optioned as an extra bedroom or formal dining room with butler's pantry, and a spacious kitchen with an island, nook and optional gourmet features. You'll also appreciate an expansive great room with optional fireplace. Upstairs, discover a versatile loft and three generous bedrooms, including a relaxing master suite with a walk-in closet and private bath. An optional covered patio is available.

COMMUNITY LOCATION

22744 Rolling Brook Lane
Wildomar, CA 92595
800-852-9714

HOME GALLERY

5171 California Avenue
Irvine, CA 92617
800-852-9714



COMMUNITY LOCATION

22744 Rolling Brook Lane
Wildomar, CA 92595
800-852-9714

HOME GALLERY

5171 California Avenue
Irvine, CA 92617
800-852-9714

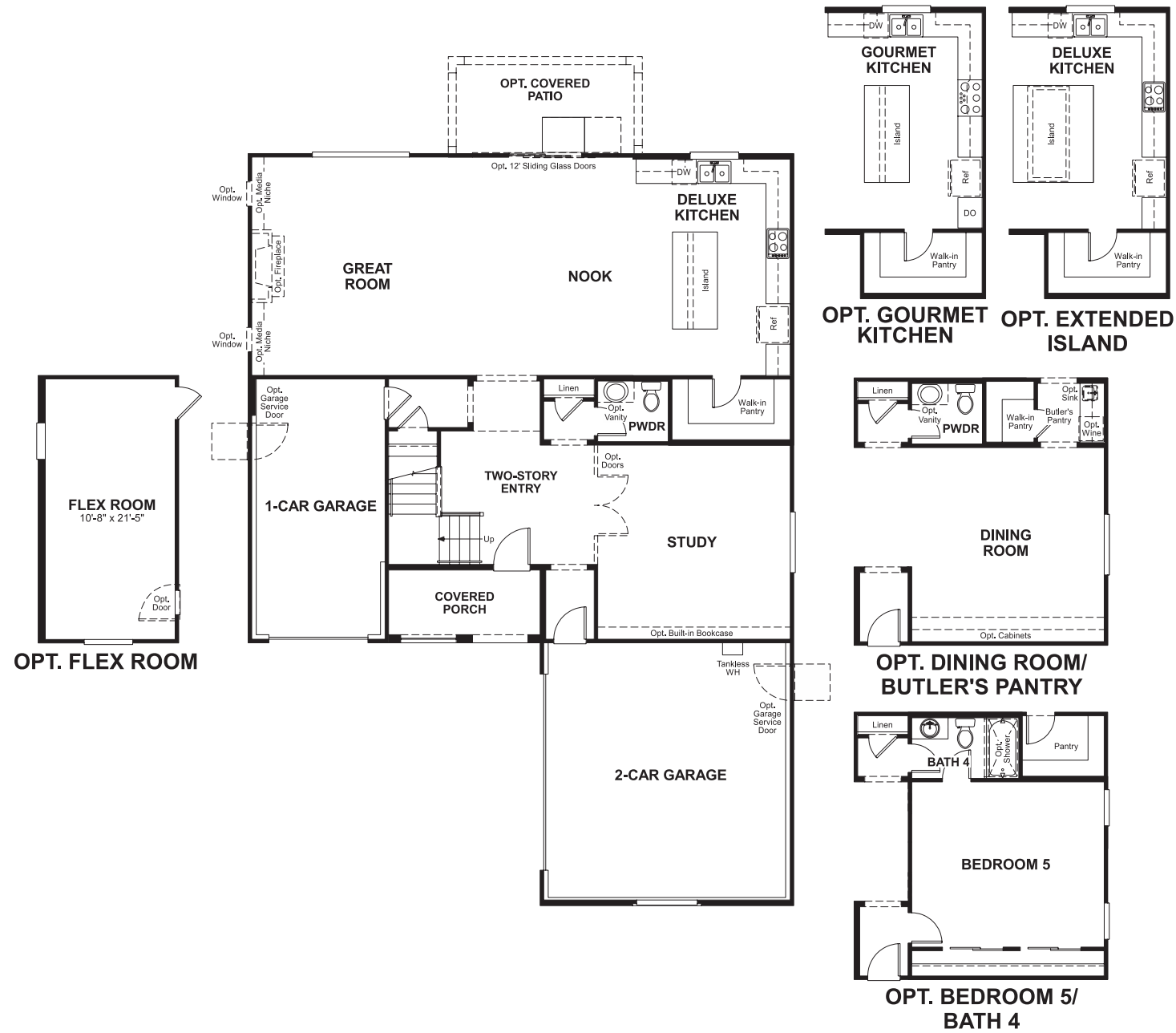


Chaparral at The Ranch
THOMAS

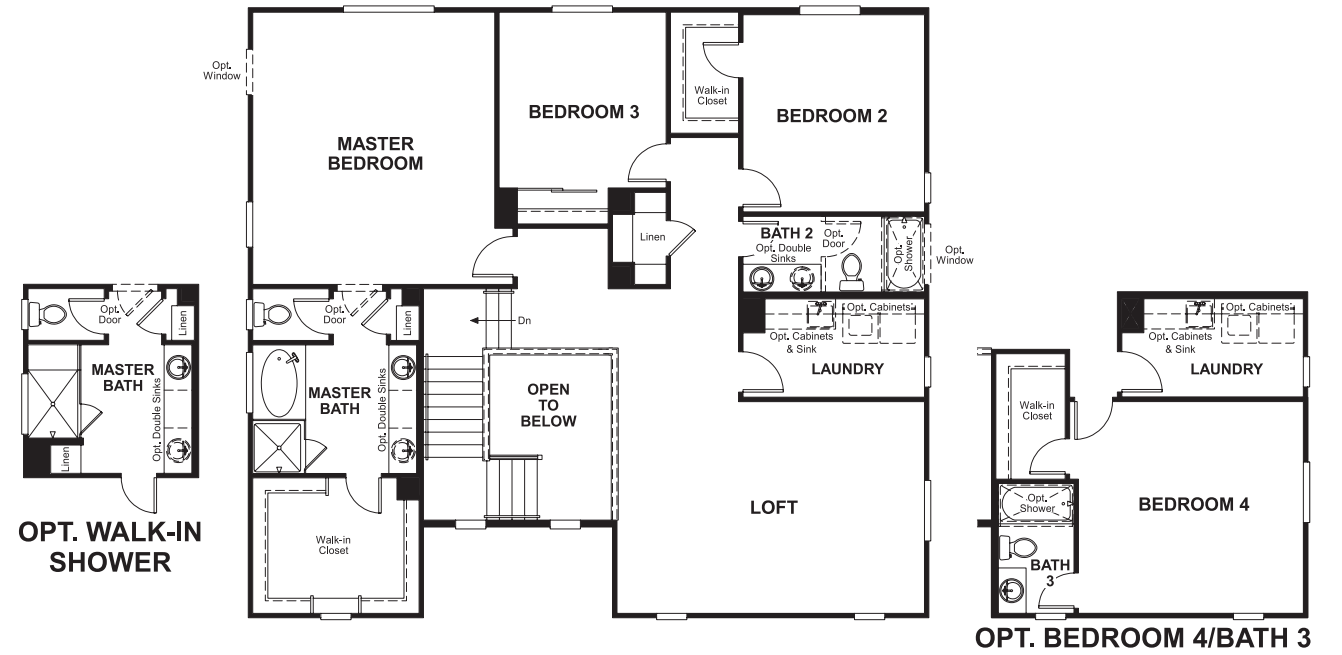
Approx. square feet: 3,050
Stories: 2
Bedrooms: 3

Garage: 3-car
Plan Number: S30T

Floor Plan
Main Floor



Floor Plan
Second Floor



**THIS PLAN'S PROJECTED
HERS® INDEX = 71** *
Projected Rating Based on Plans – Field Confirmation Required

How does this floor plan rate?
Take a look: **100** = Standard new home* **130** = Typical resale home**
The lower the number, the better! Refer to the RESNET® HERS index brochure or go to www.RESNET.us for details.

What's a HERS® Index? HERS stands for Home Energy Rating System, a system created by RESNET® to measure home energy efficiency. A Projected HERS index or rating is a computer simulation performed prior to construction by a third-party HERS rater using RESNET-accredited rating software, rated feature and specification data derived from home plans, features and specifications, and other data selected or assumed by the rater. The projected HERS index is approximate and is subject to change without notice. Actual results will vary.

*This information is presented for education purposes only. The HERS index for a confirmed rating will be determined by a third-party HERS rater based on data gathered from on-site observations and, if required, testing of rated features for a home as featured, optioned, located, oriented and/or built.
+Standard new home is based on the RESNET® Reference Home definition with a HERS® index of 100 (based on the 2006 International Energy Conservation Code).
++Typical resale home is based on the U.S. Department of Energy definition with a HERS® index of 130.

^RESNET® has developed the HERS® index to indicate the comparative efficiencies of homes. It is no guarantee that energy efficiencies will be achieved.