

Eagle Crest Ranch
TIMOTHY



Elevation A

Approx. square feet: 2,300

Stories: 1

Bedrooms: 3 - 4

Garage: 2- to 3-car

Plan Number: T23T

Walk-in closets in every bedroom and an enormous walk-in pantry in the kitchen give the ranch-style Timothy plan ample storage space to match its comfortable living areas. Personalize your plan with options like a covered patio, a gourmet kitchen, a deluxe master bath and a bedroom or dining room in lieu of the study.

Available elevations:



Elevation A



Elevation B shown with optional stone



Elevation C shown with optional stone



COMMUNITY LOCATION
38976 South Easy Gallop Drive
Tucson, AZ 85739
520-498-4141

HOME GALLERY
3091 West Ina Road
Tucson, AZ 85741
877-346-8102



COMMUNITY LOCATION
38976 South Easy Gallop Drive
Tucson, AZ 85739
520-498-4141

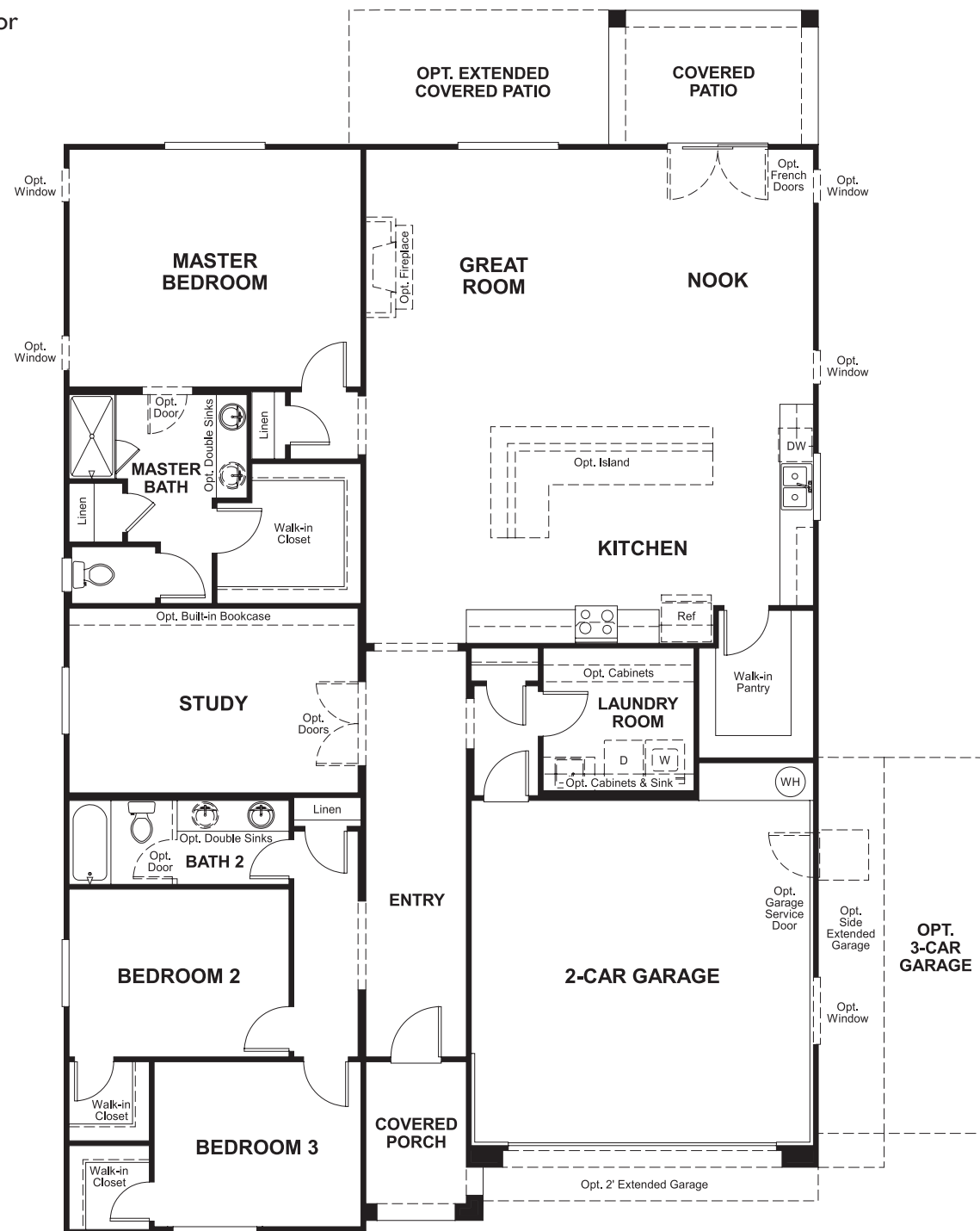
HOME GALLERY
3091 West Ina Road
Tucson, AZ 85741
877-346-8102

Eagle Crest Ranch
TIMOTHY

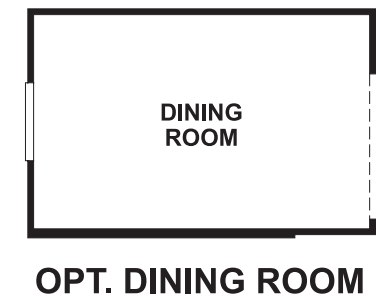
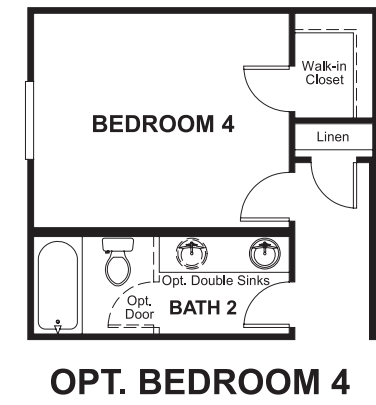
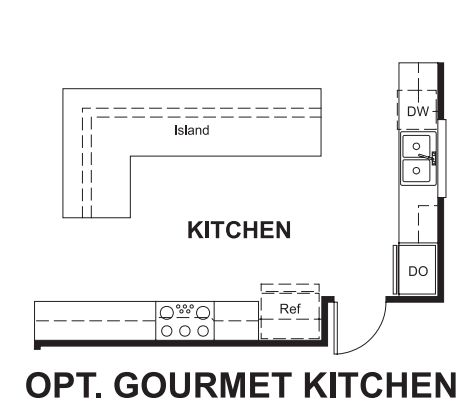
Approx. square feet: 2,300
Stories: 1
Bedrooms: 3 - 4

Garage: 2- to 3-car
Plan Number: T23T

Floor Plan
Main Floor



Floor Plan
Main Floor Options



**THIS PLAN'S PROJECTED
HERS® INDEX = 66***
Projected Rating Based on Plans – Field Confirmation Required

How does this floor plan rate?
Take a look: **100** = Standard new home* **130** = Typical resale home**
The lower the number, the better! Refer to the RESNET® HERS index brochure or go to www.RESNET.us for details.

What's a HERS® Index? HERS stands for Home Energy Rating System, a system created by RESNET® to measure home energy efficiency.[^]
A Projected HERS index or rating is a computer simulation performed prior to construction by a third-party HERS rater using RESNET-accredited rating software, rated feature and specification data derived from home plans, features and specifications, and other data selected or assumed by the rater. The projected HERS index is approximate and is subject to change without notice. Actual results will vary.

*This information is presented for education purposes only. The HERS index for a confirmed rating will be determined by a third-party HERS rater based on data gathered from on-site observations and, if required, testing of rated features for a home as featured, optioned, located, oriented and/or built.
+Standard new home is based on the RESNET® Reference Home definition with a HERS® index of 100 (based on the 2006 International Energy Conservation Code).
++Typical resale home is based on the U.S. Department of Energy definition with a HERS® index of 130.

[^]RESNET® has developed the HERS® index to indicate the comparative efficiencies of homes. It is no guarantee that energy efficiencies will be achieved.