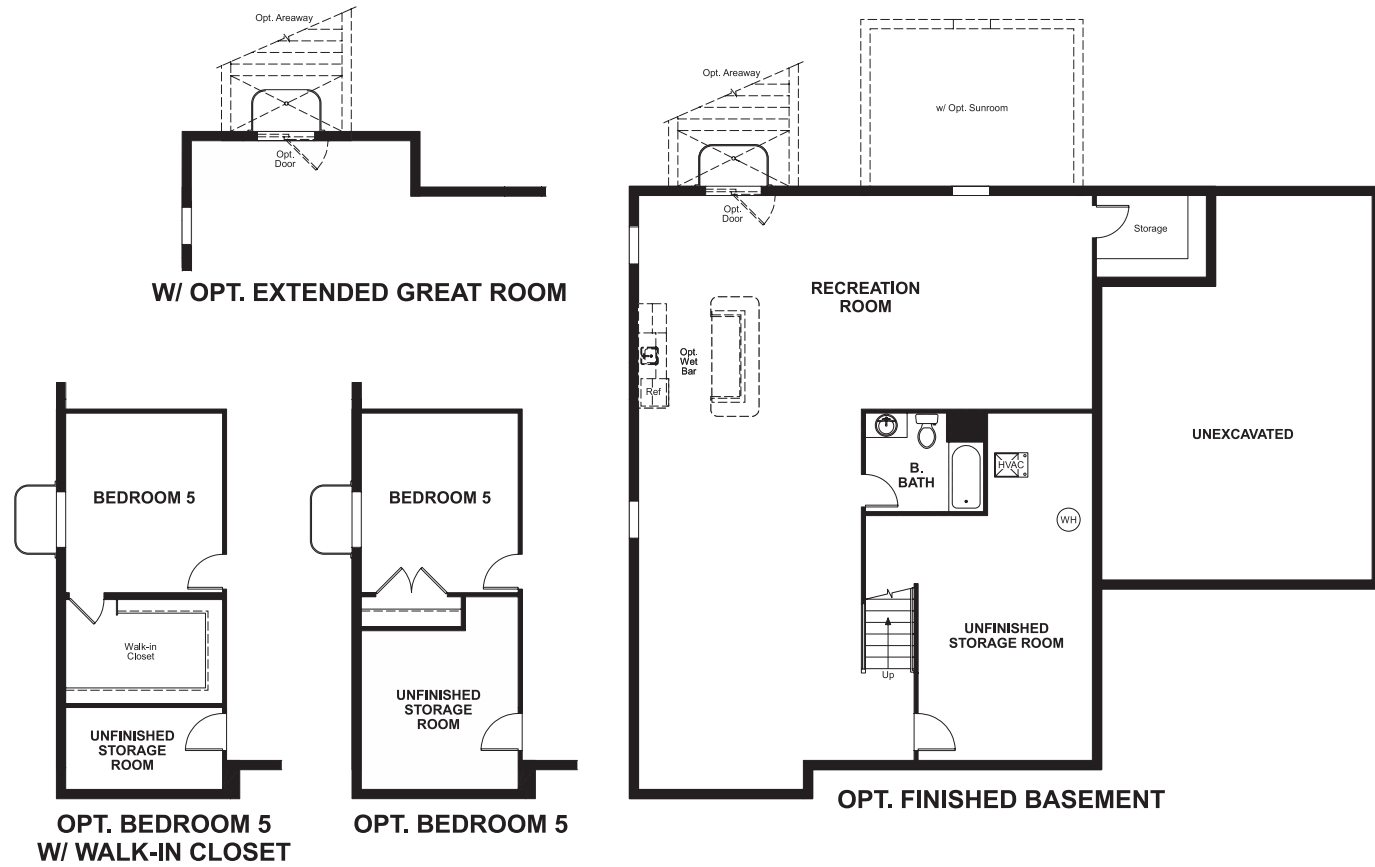


Clearview at New Market
WARREN

Approx. square feet: 2,900
Stories: 2
Bedrooms: 4 - 5

Garage: 2-car
Plan Number: M287

Floor Plan
Basement



Elevation A

Available elevations:



Elevation A



Elevation B



Elevation C



Elevation D

Approx. square feet: 2,900
Stories: 2
Bedrooms: 4 - 5
Garage: 2-car
Plan Number: M287

The Warren plan offers a private study, formal living and dining rooms and a well-appointed kitchen. Other highlights include a generous master suite with two walk-in closets and optional deluxe bath and a convenient mud room off the garage. Personalize this plan with a gourmet kitchen and finished basement recreation room.

COMMUNITY LOCATION
6100 Yeager Court
New Market, MD 21774
410-312-2829

HOME GALLERY
8221 Gateway Overlook Drive
Elkridge, MD 21075
888-772-4545



COMMUNITY LOCATION
6100 Yeager Court
New Market, MD 21774
410-312-2829

HOME GALLERY
8221 Gateway Overlook Drive
Elkridge, MD 21075
888-772-4545

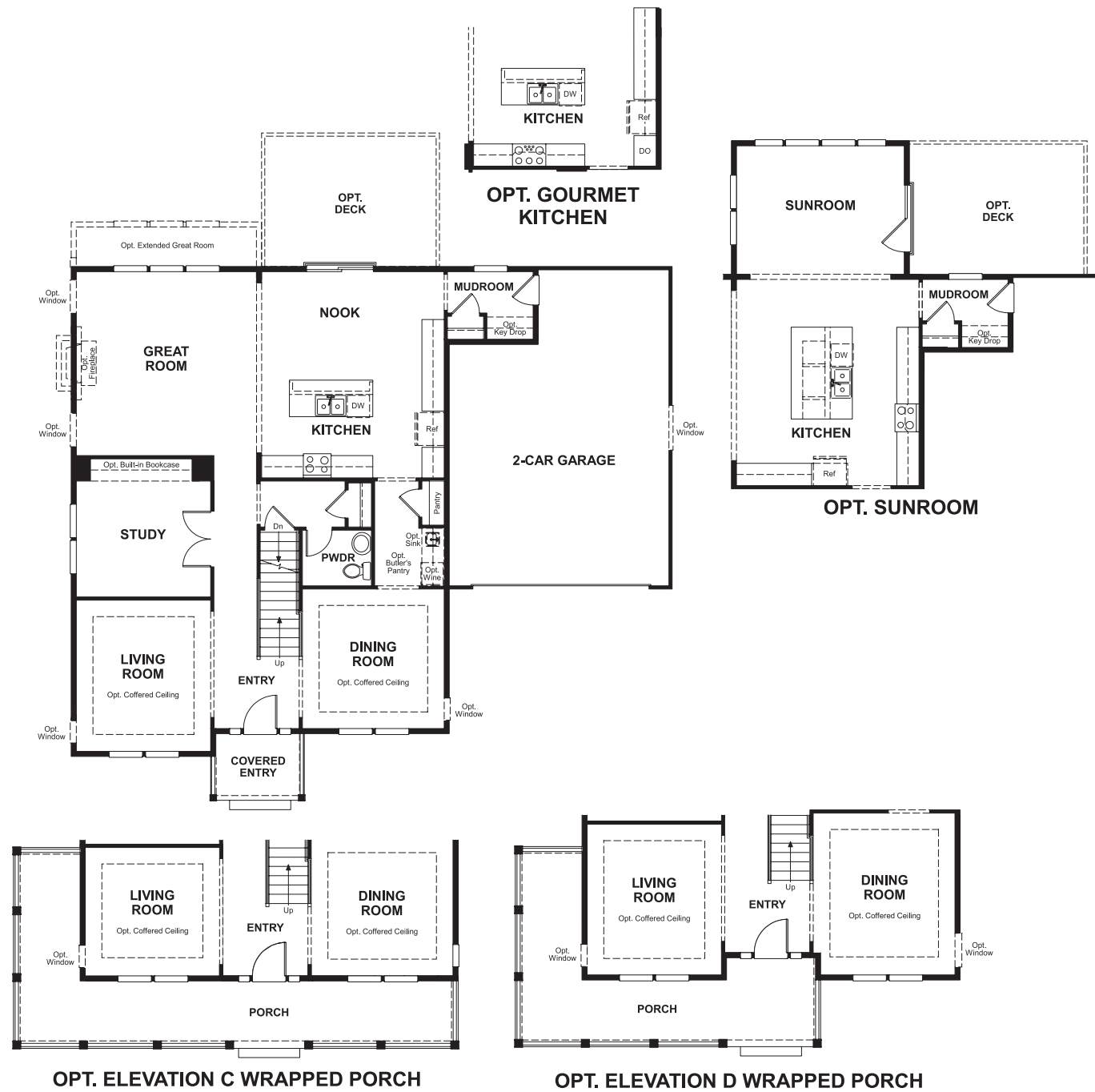


Clearview at New Market
WARREN

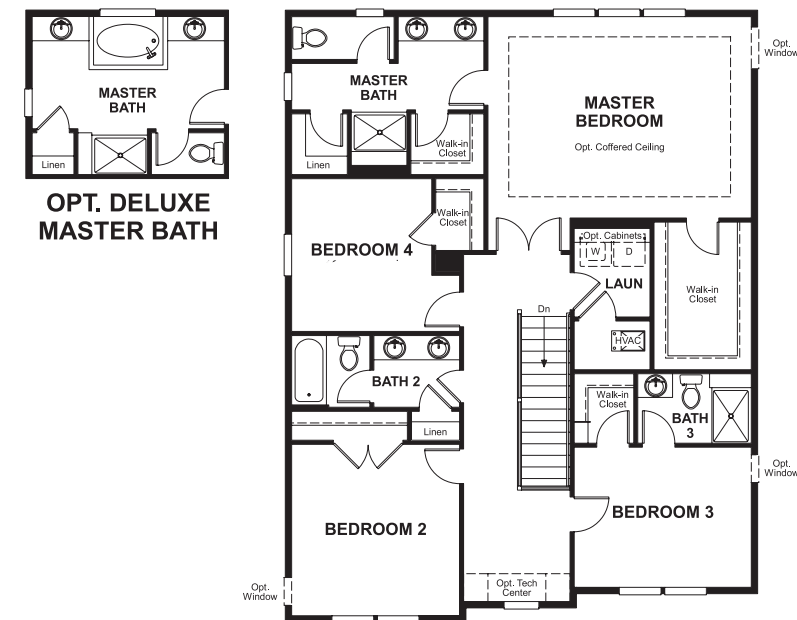
Approx. square feet: 2,900
Stories: 2
Bedrooms: 4 - 5

Garage: 2-car
Plan Number: M287

Floor Plan
First Floor



Floor Plan
Second Floor



THIS PLAN'S PROJECTED HERS® INDEX = 57*
Projected Rating Based on Plans – Field Confirmation Required

How does this floor plan rate?
Take a look: **100** = Standard new home* **130** = Typical resale home**
The lower the number, the better! Refer to the RESNET® HERS index brochure or go to www.RESNET.us for details.

What's a HERS® Index? HERS stands for Home Energy Rating System, a system created by RESNET® to measure home energy efficiency.[^]
A Projected HERS index or rating is a computer simulation performed prior to construction by a third-party HERS rater using RESNET-accredited rating software, rated feature and specification data derived from home plans, features and specifications, and other data selected or assumed by the rater. The projected HERS index is approximate and is subject to change without notice. Actual results will vary.

*This information is presented for education purposes only. The HERS index for a confirmed rating will be determined by a third-party HERS rater based on data gathered from on-site observations and, if required, testing of rated features for a home as featured, optioned, located, oriented and/or built.
+Standard new home is based on the RESNET® Reference Home definition with a HERS® index of 100 (based on the 2006 International Energy Conservation Code).
++Typical resale home is based on the U.S. Department of Energy definition with a HERS® index of 130.

[^]RESNET® has developed the HERS® index to indicate the comparative efficiencies of homes. It is no guarantee that energy efficiencies will be achieved.